

# FLORIDA DEPARTMENT OF ENVIRONMENTAL PROTECTION CERTIFIED CORNER RECORD

P-13

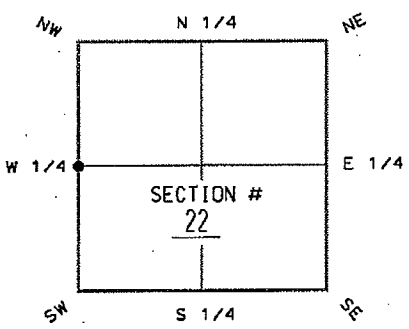
DOC. # \_\_\_\_\_

**CORNER DESCRIPTION:**

Depict corner with **•**

**MONUMENTATION DESCRIPTION (EVIDENCE FOUND OR METHOD TO SET)**

FOUND 3"X3" CONCRETE MONUMENT AS SHOWN ON CERTIFIED CORNER RECORD  
• 056080. NEW REFERENCE CORNERS HAVE BEEN SET.



N 1/4 corner of Section 22  
Twp 44S. Rge 25E  
Tallahassee Base Meridian,  
Lee County(s), Florida

**HORIZONTAL POSITION INFORMATION (if determined):**

Latitude 26°38'04.83694" N Longitude 81°48'27.12499" W

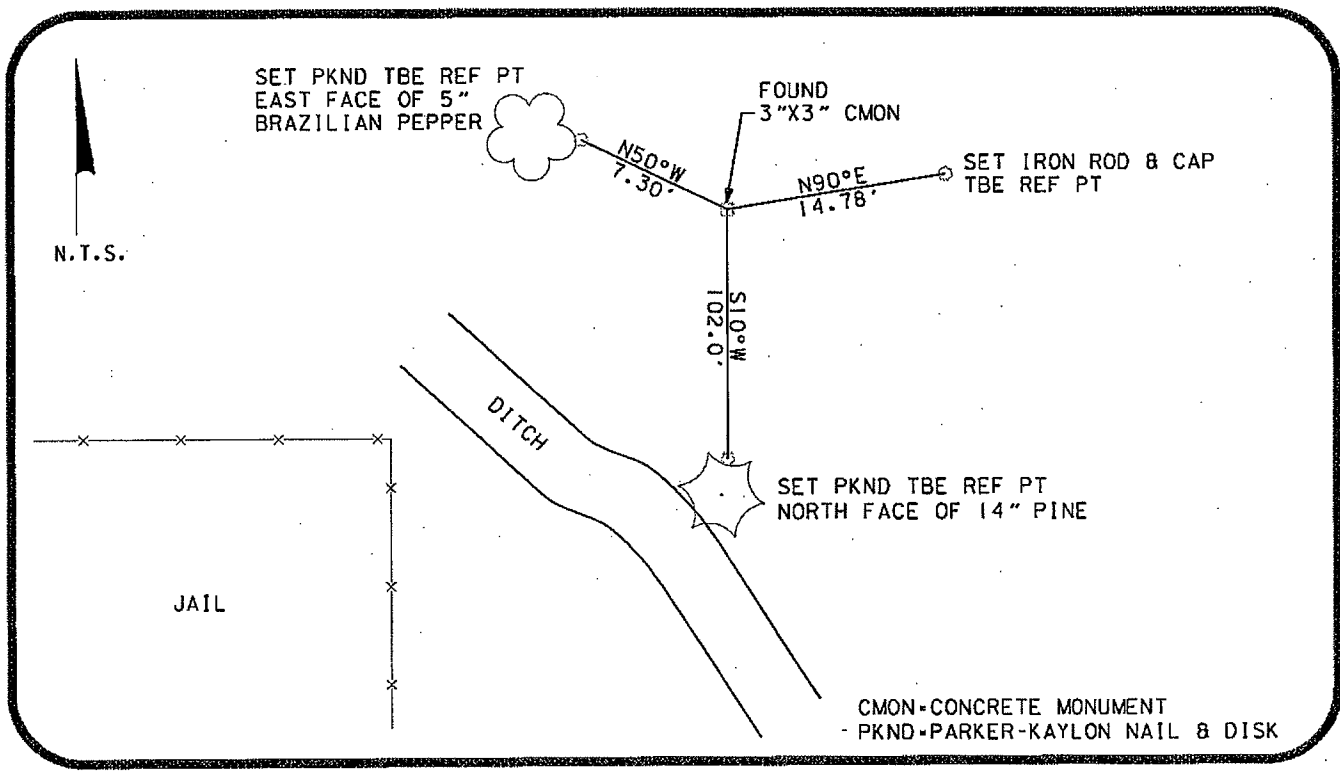
Y(NORTHING-Ft.) 836,424.921 X(EASTING-Ft.) 719,038.450 Zone FL-WEST

Convergence 0°05'10.6169" Scale factor 0.99994570

Coordinate determination (circle one): Field traverse  GPS

Horizontal datum (circle one): NAD27 NAD83(1986)  NAD83(1990) other (explain)

Accuracy (circle one): 1st  2nd  3rd  other \_\_\_\_\_



CMON=CONCRETE MONUMENT  
PKND= PARKER-KAYLON NAIL & DISK

**SURVEYORS CERTIFICATE:**

I certify the monument and accessories indicated above were field located on 5/23/05

*Delaney Hill*  
SIGNATURE PLS 5196  
TBE GROUP, INC. PSM NO.  
FIRM OR AGENCY LB 6668  
380 PARK PLACE BLVD, SUITE 300 LB NO.  
ADDRESS  
CLEARWATER FLORIDA 33759  
CITY STATE ZIP  
727-531-3505  
PHONE NUMBER DATE

SEND ORIGINAL TO:  
Department of Environmental Protection  
Bureau of Surveying and Mapping  
3900 Commonwealth Boulevard  
Mail Station 105  
Tallahassee, Florida 32399

D.E.P. USE ONLY
Processed: _____
B.L.M. - I.D. <u>400 340</u>
QUAD - I.D. _____

**EMBOSSSED SEAL OVER SIGNATURE**