

FLORIDA DEPARTMENT OF ENVIRONMENTAL PROTECTION CERTIFIED CORNER RECORD

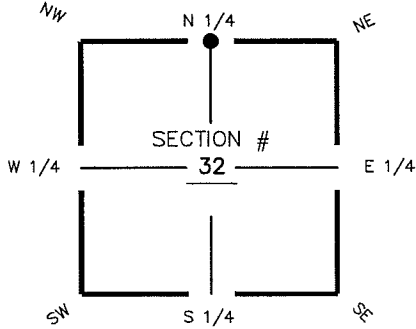
DOC. # _____

V-7

CORNER DESCRIPTION: MONUMENTATION DESCRIPTION (EVIDENCE FOUND OR METHOD TO SET)

Depict corner with

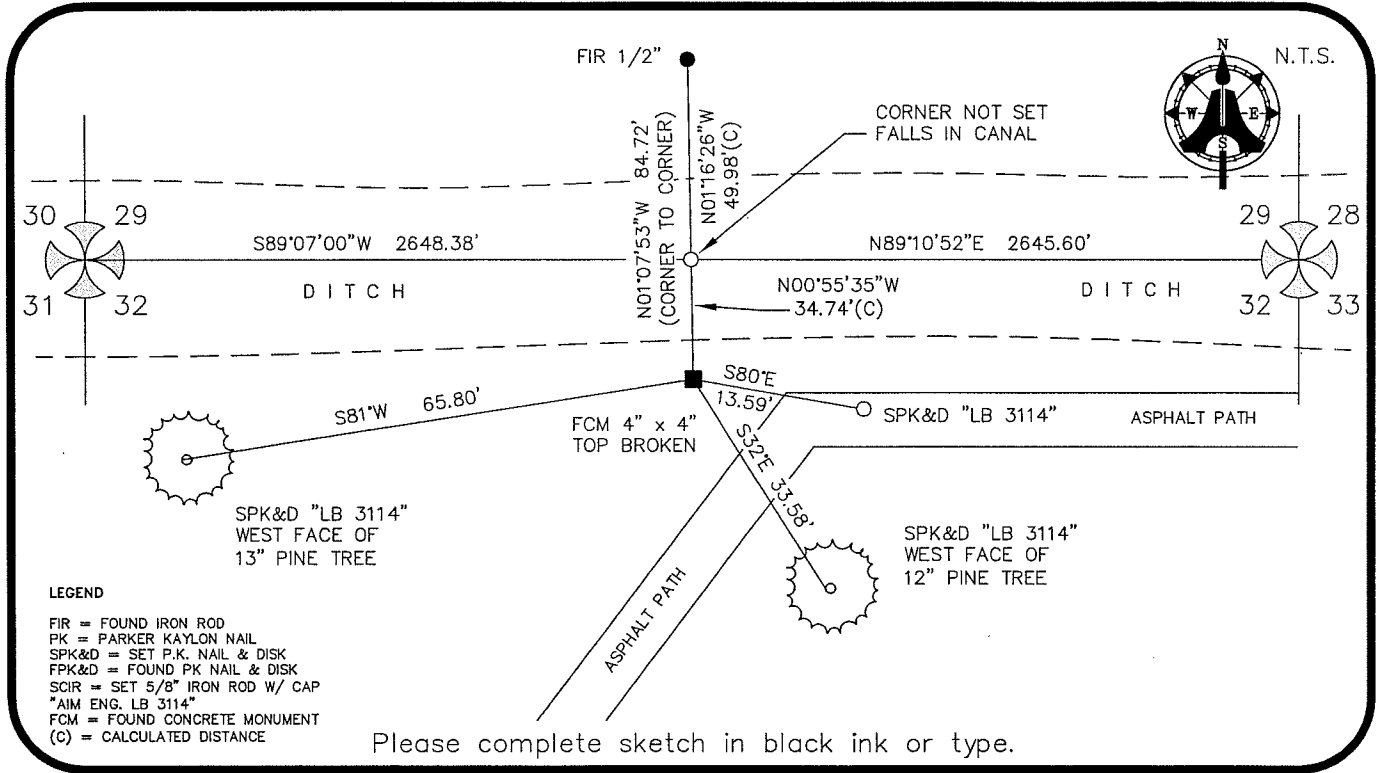
**FOUND 4" x 4" CONCRETE MONUMENT
TOP BROKEN**



N 1/4 corner of Section 32
Twp 44 S, Rge 25 E
Tallahassee Base Meridian,
LEE County(s), Florida

HORIZONTAL POSITION INFORMATION (if determined):

Latitude 26° 36' 44.3548" N Longitude 81° 49' 53.6807" W
Y(NORTHING-Ft.) 828287.64 X(EASTING-Ft.) 711195.04 Zone FL W
Convergence 00° 04' 31.6" Scale factor 0.99994465
Coordinate determination (circle one): Field traverse GPS
Horizontal datum (circle one): NAD27 NAD83(1986) NAD83(1990) other (explain)
Accuracy (circle one): 1st 2nd 3rd other _____



LEGEND

- FIR = FOUND IRON ROD
- PK = PARKER KAYLON NAIL
- SPK&D = SET P.K. NAIL & DISK
- FPK&D = FOUND PK NAIL & DISK
- SCIR = SET 5/8" IRON ROD W/ CAP
- *AIM ENG. LB 3114"
- FCM = FOUND CONCRETE MONUMENT
- (C) = CALCULATED DISTANCE

Please complete sketch in black ink or type.

SURVEYORS CERTIFICATE:

I certify the monument and accessories indicated above were field located on AUGUST 21, 2006

[Signature] 5688
SIGNATURE PSM NO.
AIM ENGINEERING & SURVEYING, INC. LB 3114
FIRM OR AGENCY LB NO.
5300 LEE BOULEVARD
ADDRESS
LEHIGH ACRES, FLORIDA 33971-1026
CITY STATE ZIP
(239) 332-4569 9/11/06
PHONE NUMBER DATE

SEND ORIGINAL TO:
Department of Environmental Protection
Bureau of Surveying and Mapping
3900 Commonwealth Boulevard
Mail Station 105
Tallahassee, Florida 32399

D.E.P. USE ONLY	
Processed:	_____
B.L.M. - I.D.	<u>240 200</u>
QUAD - I.D.	_____

EMBOSSSED SEAL OVER SIGNATURE