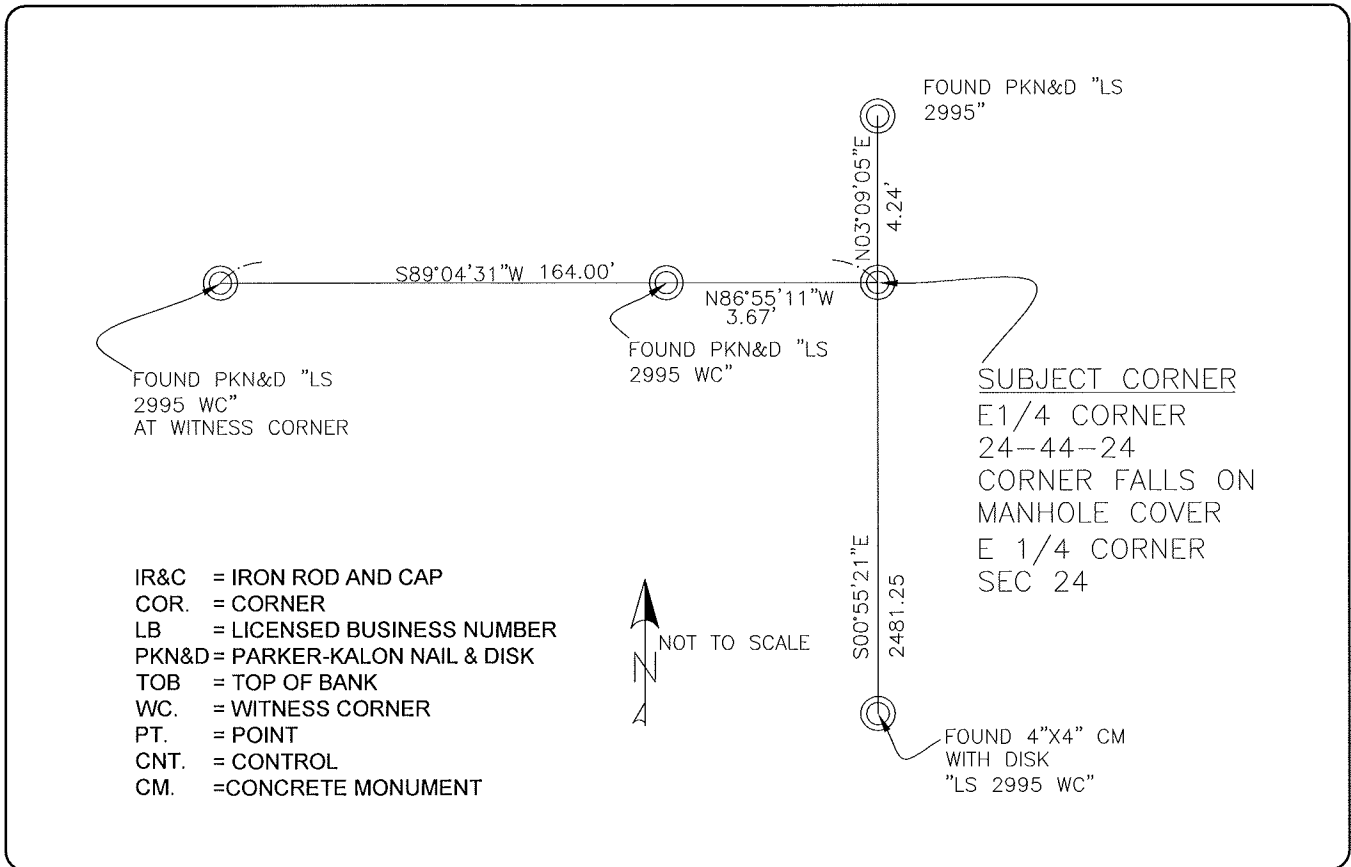


**LAND CORNER RECORD**

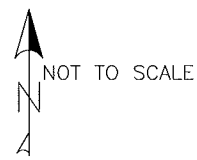
**PUBLIC WORKS  
LEE COUNTY, FLORIDA**

Address - 1500 Monroe St., Ft. Myers, Fla. 33901

Phone : (239) 479-8900

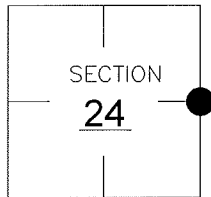


- IR&C = IRON ROD AND CAP
- COR. = CORNER
- LB = LICENSED BUSINESS NUMBER
- PKN&D = PARKER-KALON NAIL & DISK
- TOB = TOP OF BANK
- WC. = WITNESS CORNER
- PT. = POINT
- CNT. = CONTROL
- CM. = CONCRETE MONUMENT



**CORNER DESCRIPTION**

E1/4 Corner  
Section 24  
Township 44  
Range 24



HELD COORDINATES AS SHOWN ON CCR# 057315. GENERALLY ACCEPTED CORNER BY LOCAL SURVEYORS. WESTERLY WITNESS CORNER & SOUTHERLY REFERENCE FOUND AS SHOWN ON CCR#057315. OTHER REFERENCES SHOWN WERE SET BY SURVEYOR OF RECORD PER CCR#057135

**HORIZONTAL POSITION INFORMATION**

Florida West Zone, NAD 1983(1990 Adjustment)  
Northing(ft) 836028.234 Easting(ft) 703150.871  
Latitude 26°38'01.12" N Longitude 081°51'22.22" W  
Scale Factor 0.99994

**EXISTING CERTIFIED CORNER RECORDS**

Document No.	Date
<u>057315</u>	<u>8-9-96</u>
<u>0031997</u>	<u>4-11-89</u>

The above documents are based on FDEP Bureau of Surveying and Mapping Record Information.

I hereby certify the monument and accessories shown above were field located on 3-05-05

**DARREN TOWNSEND**  
Professional Surveyor and Mapper  
Florida Certificate No. 6476  
Date Signed 8/22/05  
COONER & ASSOC, INC  
5670 ZIP DRIVE  
Fort Myers, Florida 33905  
Phone: (239) 277-0722

POINT NO. 9542

BLM REFERENCE NO. T44SR24E700340