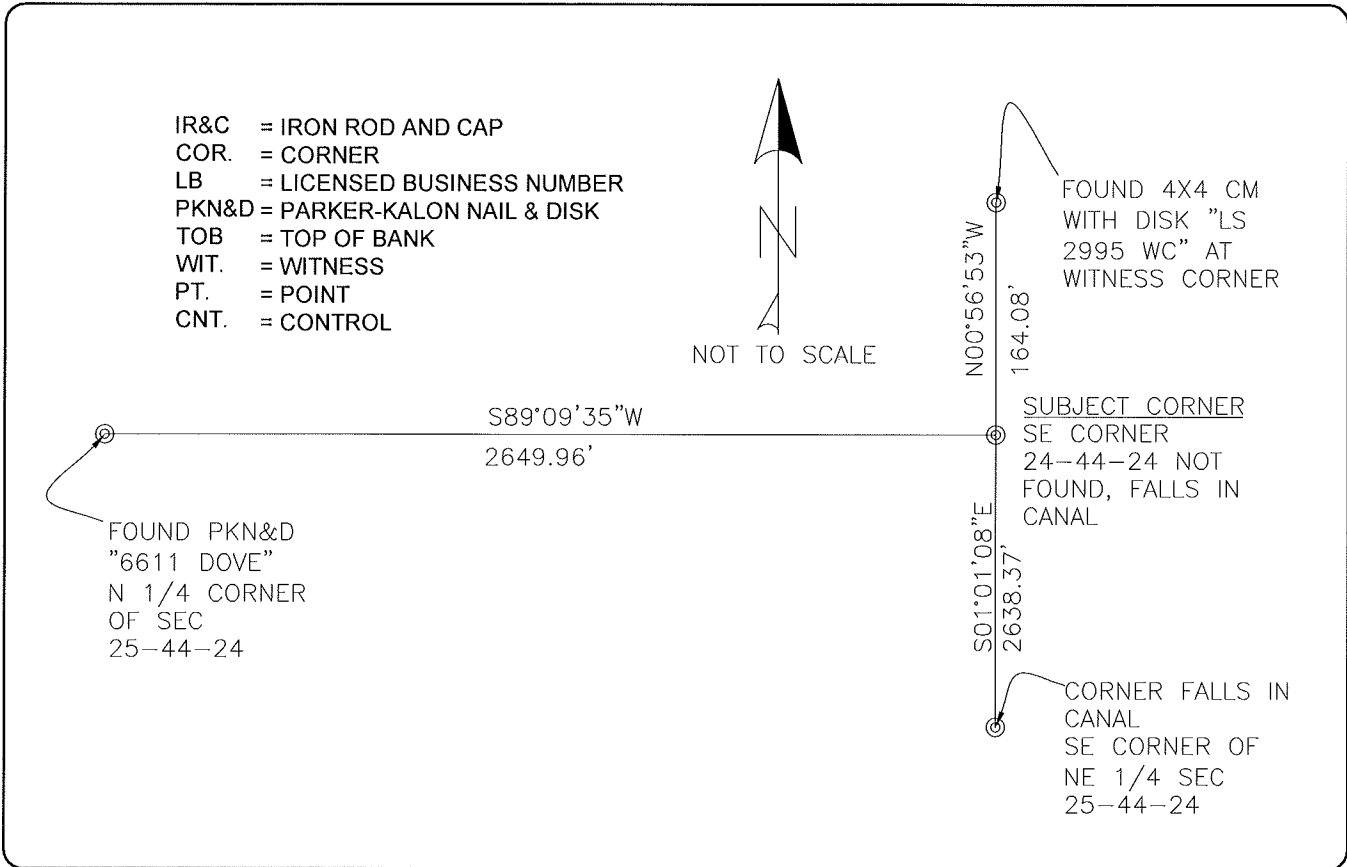


**LAND CORNER RECORD**

**PUBLIC WORKS  
LEE COUNTY, FLORIDA**

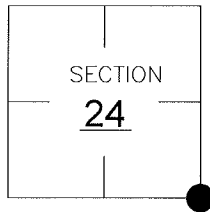
Address - 1500 Monroe St., Ft. Myers, Fla. 33901

Phone : (239) 479-8900



**CORNER DESCRIPTION**

SE1/4 Corner  
Section 24  
Township 44  
Range 24



-HELD COORDINATE VALUES AS SHOWN ON CCR# 057316. GENERALLY ACCEPTED CORNER BY LOCAL SURVEYORS.  
-WEST REFERENCE FOUND IN POSITION OF RAIL ROAD SPIKE DESCRIBED IN CCR# 057318.  
RAIL ROAD SPIKE BELIEVED TO BE BELOW FOUND PKN&D UNDER NEW ASPHALT.  
-SOUTH REFERENCE AT THE SE CORNER OF THE NE 1/4 OF SECTION 25-44-24 AT GENERALLY ACCEPTED POSITION BY LOCAL SURVEYORS; REFERENCES FOUND AS SHOWN ON CCR# 057321.

**HORIZONTAL POSITION INFORMATION**

Florida West Zone, NAD 1983(1990 Adjustment)  
Northing(ft) 833383.2440 Easting(ft) 703193.539  
Latitude 26°37'34.92" N Longitude 081°51'21.78" W  
Scale Factor 0.99994

**EXISTING CERTIFIED CORNER RECORDS**

Document No.	Date
<u>057316</u>	<u>8-5-96</u>

The above documents are based on FDEP Bureau of Surveying and Mapping Record Information.

I hereby certify the monument and accessories shown above were field located on 3-05-05.

*[Signature]*  
**DARREN TOWNSEND**  
Professional Surveyor and Mapper  
Florida Certificate No. 6476  
Date Signed 3/22/05  
COONER & ASSOC, INC  
5670 ZIP DRIVE  
Fort Myers, Florida 33905  
Phone: (239) 277-0722

POINT NO. 9540

BLM REFERENCE NO. T44SR24E700300