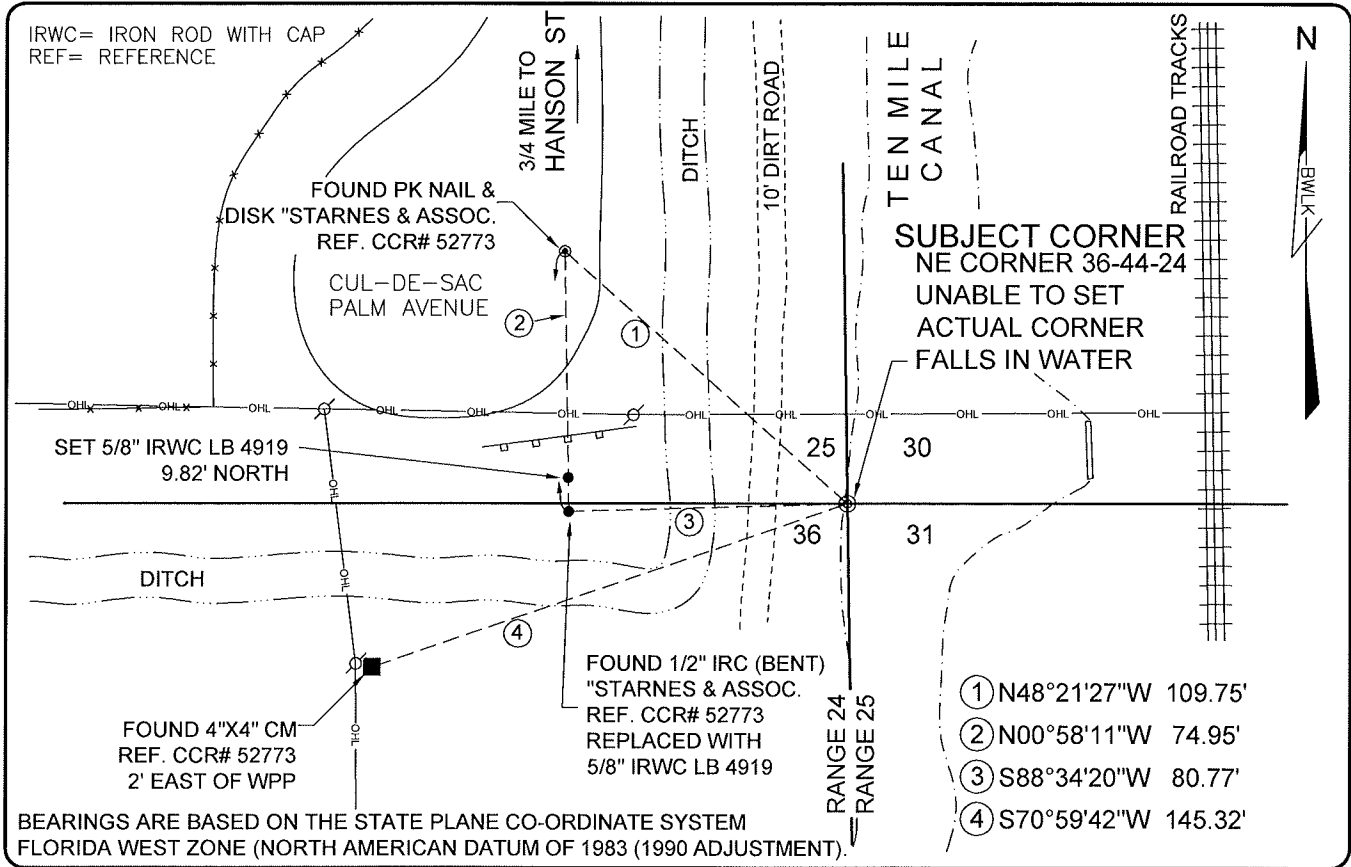


LAND CORNER RECORD

**PUBLIC WORKS
LEE COUNTY, FLORIDA**

Address - 1500 Monroe St., Ft. Myers, Fla. 33901

Phone : (239) 479-8900

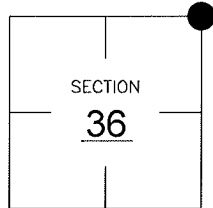


COMMENTS:

THE SUBJECT CORNER WAS NOT SET AS IT FALLS IN TEN MILE CANAL. ALL REFERENCES WERE FOUND ACCORDING WITH CCR# 52773. CALCULATED POSITION OF CORNER FROM CCR57331 AND CONFIRMED WITH REFERENCES.

CORNER DESCRIPTION

NE Corner
Section 36
Township 44
Range 24



HORIZONTAL POSITION INFORMATION

Florida West Zone, NAD 1983(1990 Adjustment)
Northing(ft) 828102.82 Easting(ft) 703279.31
Latitude 26°36'42.62019\" N. Longitude 81°51'20.90068\" W.
Scale Factor 0.99994

EXISTING CERTIFIED CORNER RECORDS

Document No.	Date
<u>52773</u>	<u>05-08-95</u>

The above documents are based on FDEP Bureau of Surveying and Mapping Record Information.

I hereby certify the monument and accessories shown above were field located on 7-22-05.

Scott C. Whitaker
SCOTT C. WHITAKER
Professional Surveyor and Mapper
Florida Certificate No. 4324
Date Signed 8-07-05

BEAN, WHITAKER, LUTZ & KAREH, INC. (LB 4919)
13041 McGregor Boulevard
Fort Myers, Florida 33919-5910
Phone: (239) 481-1331

POINT NO. 10148

BLM REFERENCE NO. T44SR24E700200