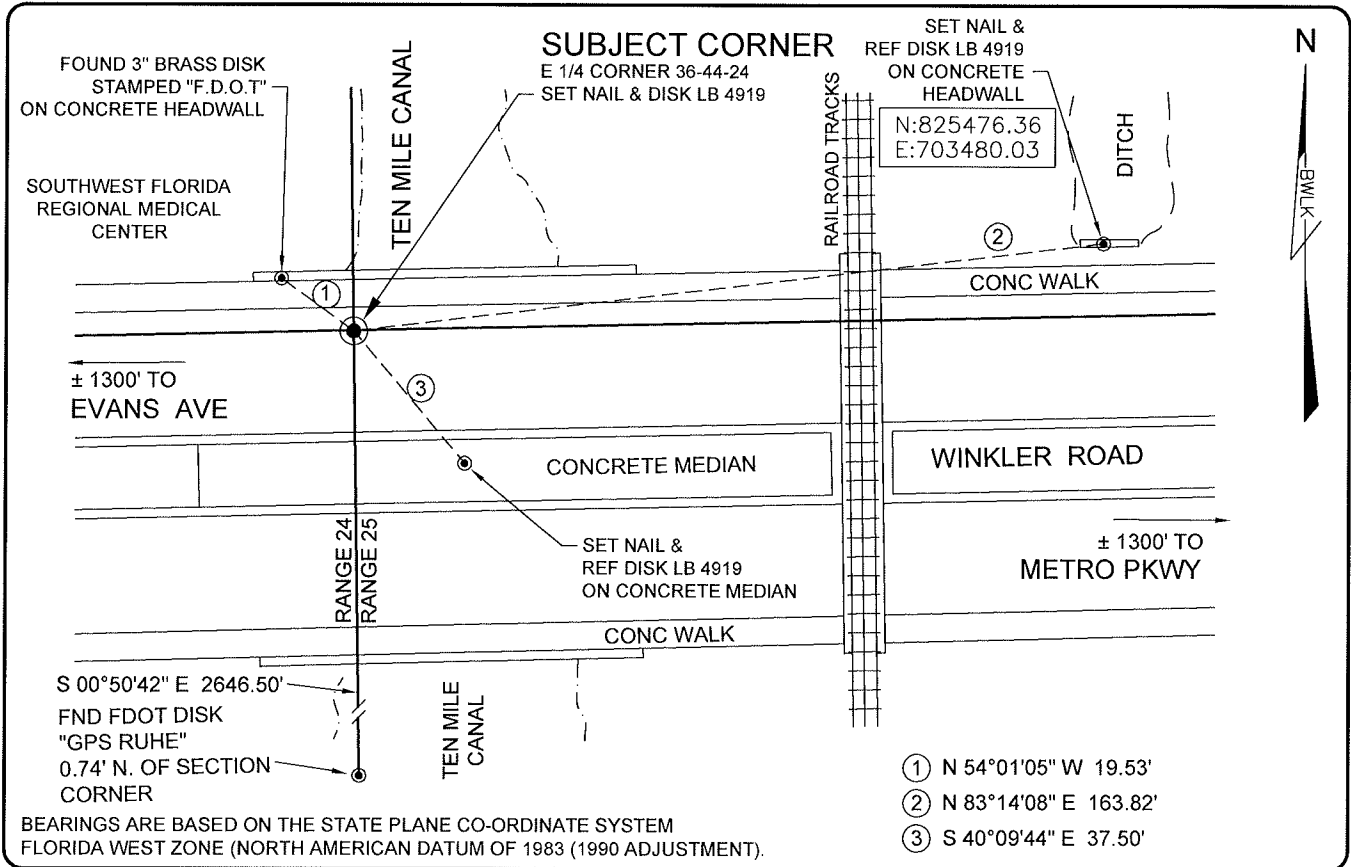


**LAND CORNER RECORD**

**PUBLIC WORKS  
LEE COUNTY, FLORIDA**

Address - 1500 Monroe St., Ft. Myers, Fla. 33901

Phone : (239) 479-8900

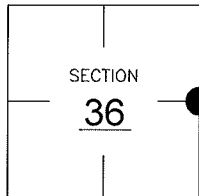


**COMMENTS:**

RESET SUBJECT CORNER BASED ON CO-ORDINATE VALUES IN CCR 57331. CONFIRMED WITH TIES SHOWN IN CCR 57331.

**CORNER DESCRIPTION**

E 1/4 Corner  
Section 36  
Township 44  
Range 24



**HORIZONTAL POSITION INFORMATION**

Florida West Zone, NAD 1983(1990 Adjustment)  
 Northing(ft) 825457.066 Easting(ft) 703317.354  
 Latitude 26°36'16.41605" Longitude 81°51'20.51434"  
 Scale Factor 0.99994

**EXISTING CERTIFIED CORNER RECORDS**

Document No.	Date
<u>57331</u>	<u>08-09-96</u>

The above documents are based on FDEP Bureau of Surveying and Mapping Record Information.

I hereby certify the monument and accessories shown above were field located on 7-26-05.

*Scott C. Whitaker*  
**SCOTT C. WHITAKER**  
 Professional Surveyor and Mapper  
 Florida Certificate No. 4324  
 Date Signed 8-09-05

BEAN, WHITAKER, LUTZ & KAREH, INC. (LB 4919)  
 13041 McGregor Boulevard  
 Fort Myers, Florida 33919-5910  
 Phone: (239) 481-1331

POINT NO. 10147

BLM REFERENCE NO. T44SR24E700140