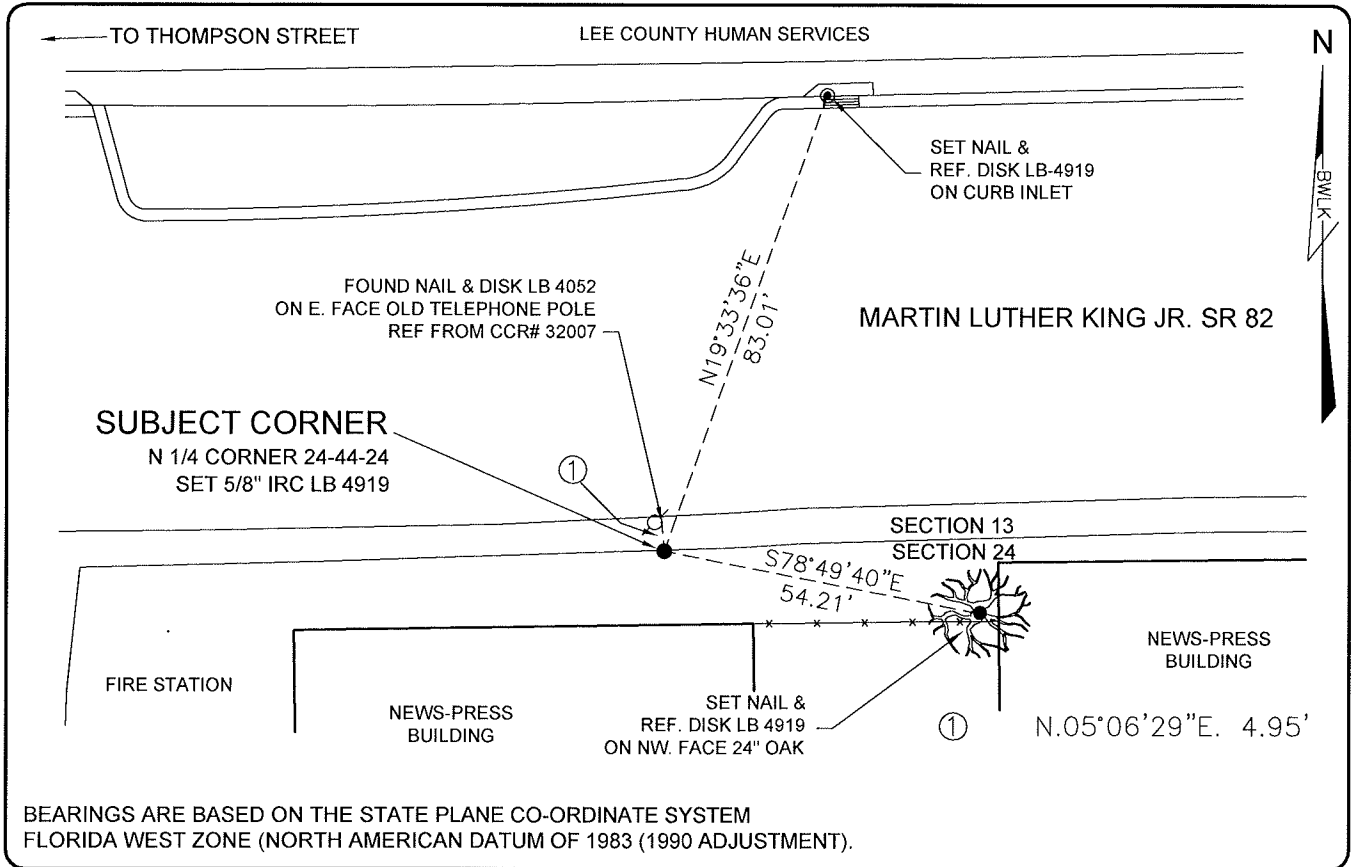


**LAND CORNER RECORD**

**PUBLIC WORKS  
LEE COUNTY, FLORIDA**

Address - 1500 Monroe St., Ft. Myers, Fla. 33901

Phone : (239) 479-8900

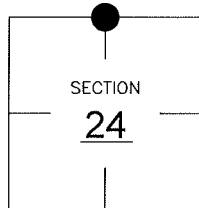


**COMMENTS:**

CORNER NOT FOUND ONLY ONE REFERENCE WAS FOUND ACCORDING WITH CCR# 32007. RE-ESTABLISHED CORNER LOCATION FROM BEARING AND DISTANCE SHOWN IN CCR# 32007. THE CO-ORDINATE VALUES CALCULATED VARY BY 0.36' FROM THOSE SHOWN IN CCR #32007.

**CORNER DESCRIPTION**

N 1/4 Corner  
Section 24  
Township 44  
Range 24



**HORIZONTAL POSITION INFORMATION**

Florida West Zone, NAD 1983(1990 Adjustment)  
 Northing(ft) 838630.556 Easting(ft) 700429.583  
 Latitude 26°38'26.91806" N. Longitude 81°51'52.17665" W.  
 Scale Factor 0.99994

**EXISTING CERTIFIED CORNER RECORDS**

Document No.	Date
<u>32007</u>	<u>04-11-89</u>
<u>56064</u>	<u>02-23-94</u>
<u>57311</u>	<u>08-09-96</u>
_____	_____
_____	_____

The above documents are based on FDEP Bureau of Surveying and Mapping Record Information.

I hereby certify the monument and accessories shown above were field located on 8-10-05.

*Scott C. Whitaker*  
**SCOTT C. WHITAKER**  
 Professional Surveyor and Mapper  
 Florida Certificate No. 4324  
 Date Signed 8-11-05

BEAN, WHITAKER, LUTZ & KAREH, INC. (LB 4919)  
 13041 McGregor Boulevard  
 Fort Myers, Florida 33919-5910  
 Phone: (239) 481-1331

POINT NO. 10250

BLM REFERENCE NO. T44SR24E640400