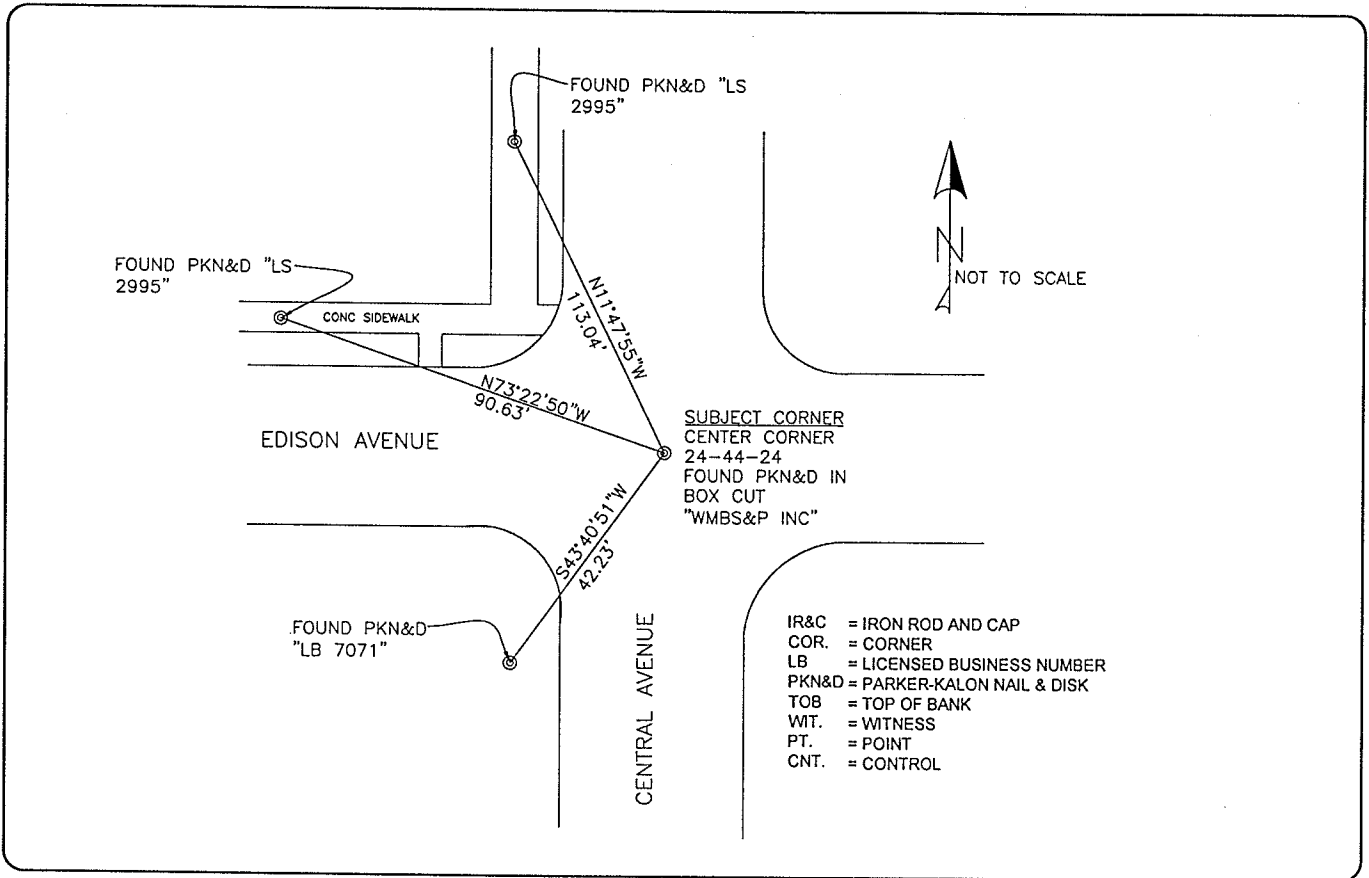


LAND CORNER RECORD

**PUBLIC WORKS
LEE COUNTY, FLORIDA**

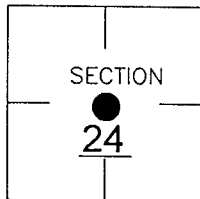
Address - 1500 Monroe St., Ft. Myers, Fla. 33901

Phone : (239) 479-8900



CORNER DESCRIPTION

CTR Corner
Section 24
Township 44
Range 24



GENERALLY ACCEPTED CORNER BY LOCAL SURVEYORS.
CORNER AND NORTHWESTERLY REFERENCES FOUND AS
SHOWN ON CCR 57314.

HORIZONTAL POSITION INFORMATION


Florida West Zone, NAD 1983(1990 Adjustment)
Northing(ft) 835983.7980 Easting(ft) 700475.3570
Latitude 26°38'00.70" N Longitude 081°51'51.70" W
Scale Factor 0.99994

EXISTING CERTIFIED CORNER RECORDS

Document No.	Date
<u>057314</u>	<u>8-9-96</u>

The above documents are based on FDEP Bureau of Surveying and Mapping Record Information.

I hereby certify the monument and accessories shown above were field located on 3-05-05


DARREN TOWNSEND
 Professional Surveyor and Mapper
 Florida Certificate No. 6476
 Date Signed 8/22/05
 COONER & ASSOC, INC
 5670 ZIP DRIVE
 Fort Myers, Florida 33905
 Phone: (239) 277-0722

POINT NO. 9518

BLM REFERENCE NO. T44SR24E640340