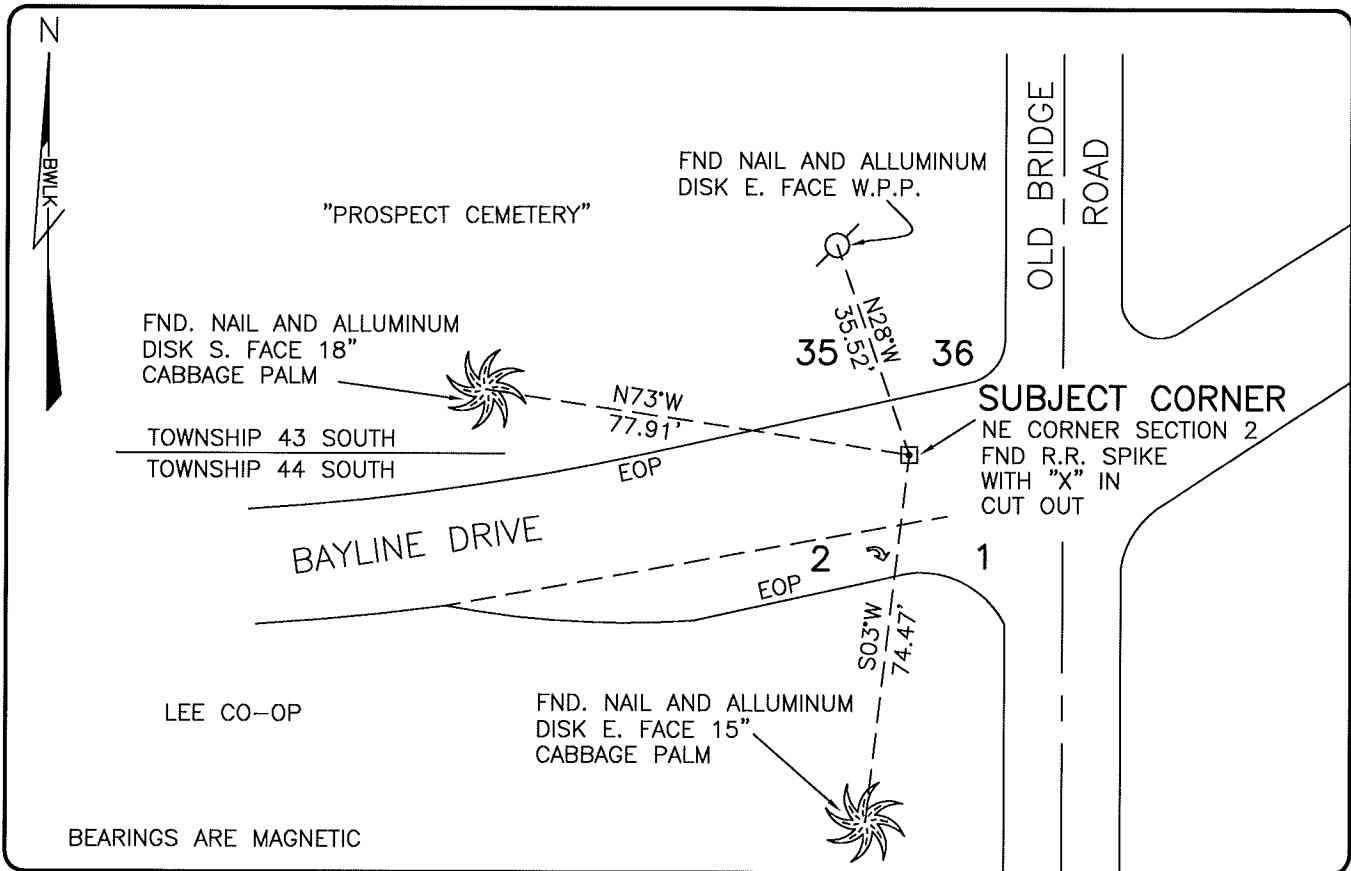


LAND CORNER RECORD

PUBLIC WORKS  
LEE COUNTY, FLORIDA

Address - 1500 Monroe St., Ft. Myers, Fla. 33901

Phone : (239) 479-8900



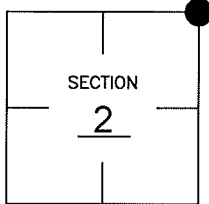
BEARINGS ARE MAGNETIC

COMMENTS:

RECOVERED CORNER AND REFERENCES AS SHOWN ON CCR 55646. CONFIRMED AND HELD CO-ORDINATE VALUES IN CCR 55646. DID NOT FIND STARNES DISK 3.45' EAST AS SHOWN IN CCR 55646.

CORNER DESCRIPTION

NE Corner  
Section 2  
Township 44  
Range 24



HORIZONTAL POSITION INFORMATION

Florida West Zone, NAD 1983(1990 Adjustment)  
Northing(ft) 853646.41 Easting(ft) 696967.48  
Latitude 26°40'55.66982 N. Longitude 81°52'30.17060 W.  
Scale Factor .99994

EXISTING CERTIFIED CORNER RECORDS

Document No.	Date
<u>55646</u>	<u>1-30-96</u>

The above documents are based on FDEP Bureau of Surveying and Mapping Record Information.

I hereby certify the monument and accessories shown above were field located on 2-24-05

*Scott C. Whitaker*  
SCOTT C. WHITAKER  
Professional Surveyor and Mapper  
Florida Certificate No. 4324  
Date Signed 8-04-05

BEAN, WHITAKER, LUTZ & KAREH, INC. (LB 4919)  
13041 McGregor Boulevard  
Fort Myers, Florida 33919-5910  
Phone: (239) 481-1331

POINT NO. 10081

BLM REFERENCE NO. T44SR24E600700