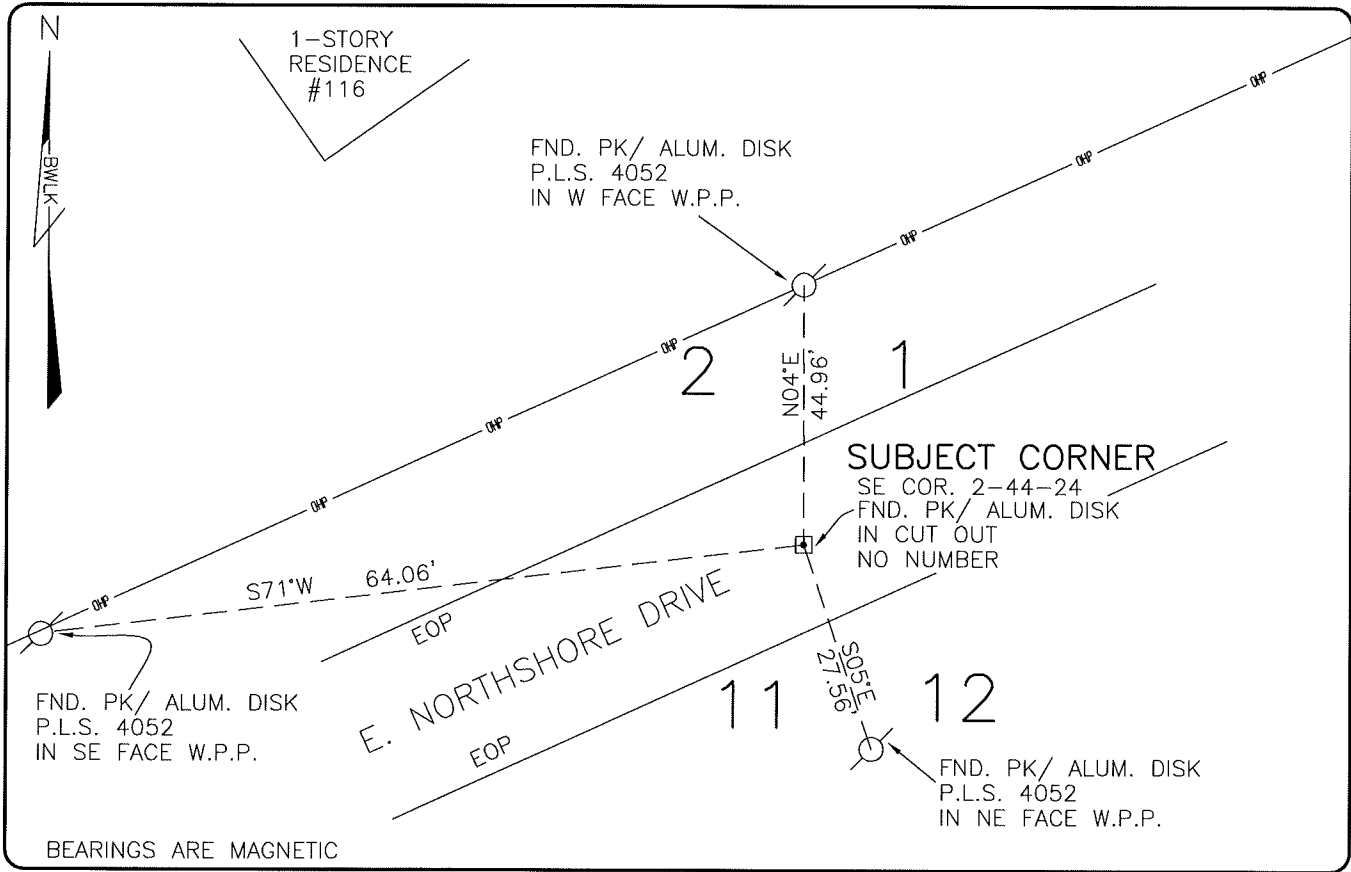


LAND CORNER RECORD

PUBLIC WORKS  
LEE COUNTY, FLORIDA

Address - 1500 Monroe St., Ft. Myers, Fla. 33901

Phone : (239) 479-8900



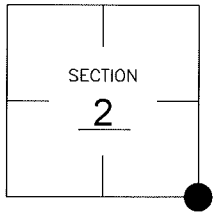
BEARINGS ARE MAGNETIC

COMMENTS:

RECOVERED CORNER AND REFERENCES AS SHOWN ON C.C.R. 55652. NOTE: C.C.R. 31999 3 OF 4 REFERENCES ARE THE SAME AS C.C.R. 55652.

CORNER DESCRIPTION

SE Corner  
Section 2  
Township 44  
Range 24



HORIZONTAL POSITION INFORMATION

Florida West Zone, NAD 1983(1990 Adjustment)  
Northing(ft) 848291.10 Easting(ft) 697007.46  
Latitude 26°40'02.63056" N. Longitude 81°52'29.78763" W.  
Scale Factor .99994

EXISTING CERTIFIED CORNER RECORDS

Document No.	Date
<u>31999</u>	<u>4-11-89</u>
<u>55652</u>	<u>1-30-96</u>

The above documents are based on FDEP Bureau of Surveying and Mapping Record Information.

I hereby certify the monument and accessories shown above were field located on 12-24-04.

*Scott C. Whitaker*

SCOTT C. WHITAKER  
Professional Surveyor and Mapper  
Florida Certificate No. 4324  
Date Signed 8-04-05

BEAN, WHITAKER, LUTZ & KAREH, INC. (LB 4919)  
13041 McGregor Boulevard  
Fort Myers, Florida 33919-5910  
Phone: (239) 481-1331

POINT NO. 10087

BLM REFERENCE NO. T44SR24E600600