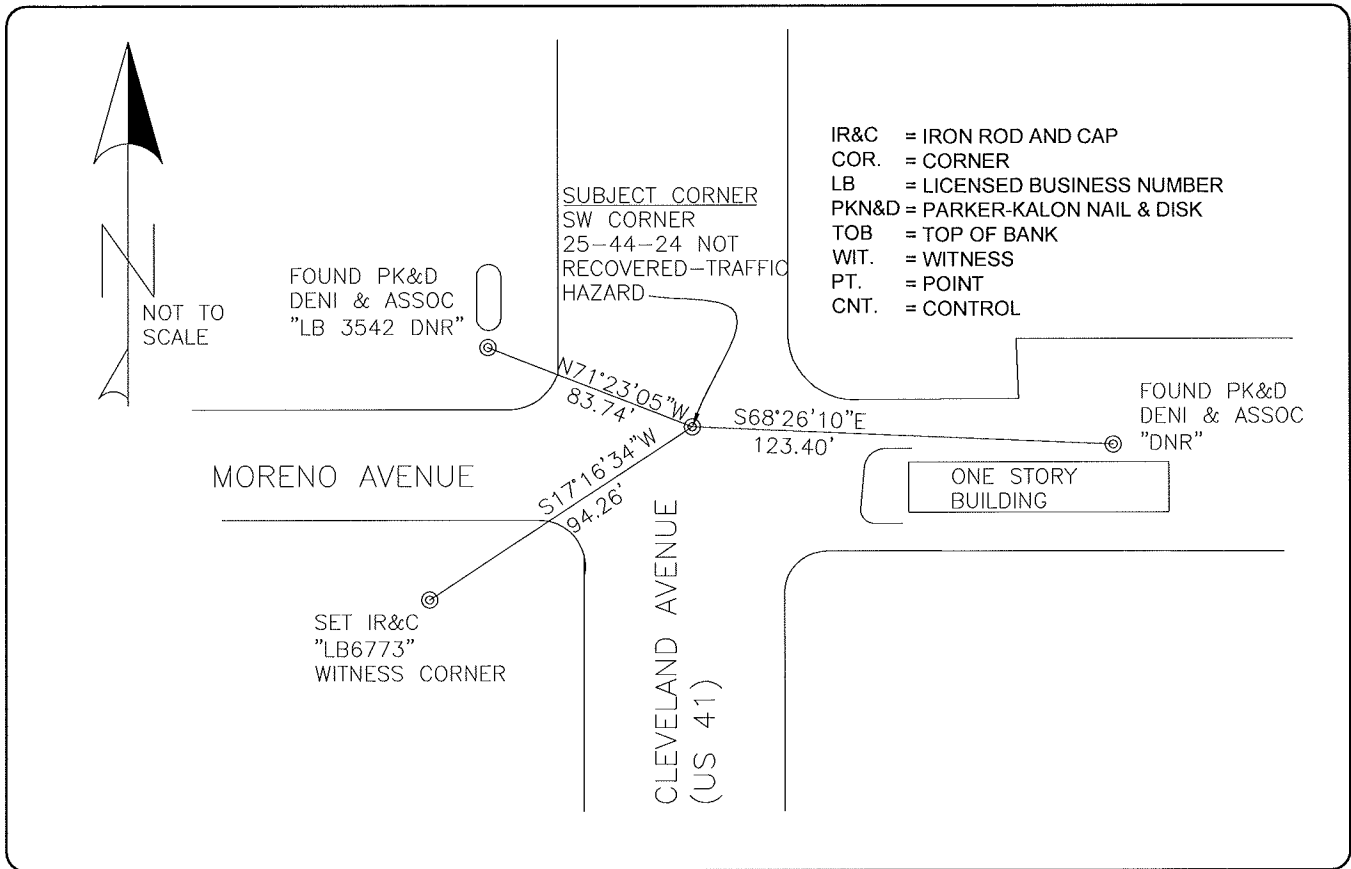


**LAND CORNER RECORD**

**PUBLIC WORKS  
LEE COUNTY, FLORIDA**

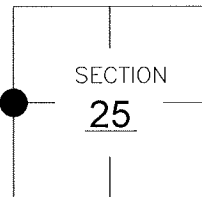
Address - 1500 Monroe St., Ft. Myers, Fla. 33901

Phone : (239) 479-8900



**CORNER DESCRIPTION**

W 1/4 Corner  
Section 25  
Township 44  
Range 24



GENERALLY ACCEPTED CORNER BY LOCAL SURVEYORS.  
REFERENCES FOUND AS SHOWN ON CCR# 057319.  
HELD COORDINATE VALUES IN CCR# 057319.

**HORIZONTAL POSITION INFORMATION**

Florida West Zone, NAD 1983(1990 Adjustment)  
Northing(ft) 830657.240 Easting(ft) 697948.057  
Latitude 26°37'07.98" N Longitude 081°52'19.61" W  
Scale Factor 0.99994

**EXISTING CERTIFIED CORNER RECORDS**

Document No.	Date
<u>057319</u>	<u>08-09-96</u>
<u>0049262</u>	<u>07-22-94</u>

The above documents are based on FDEP Bureau of Surveying and Mapping Record Information.

I hereby certify the monument and accessories shown above were field located on 04-06-05.

*[Signature]*  
**DARREN TOWNSEND**  
Professional Surveyor and Mapper  
Florida Certificate No. 6476  
Date Signed 8/22/05  
COONER & ASSOC, INC  
5670 ZIP DRIVE  
Fort Myers, Florida 33905  
Phone: (239) 277-0722

POINT NO. 9546

BLM REFERENCE NO. T44SR24E600240