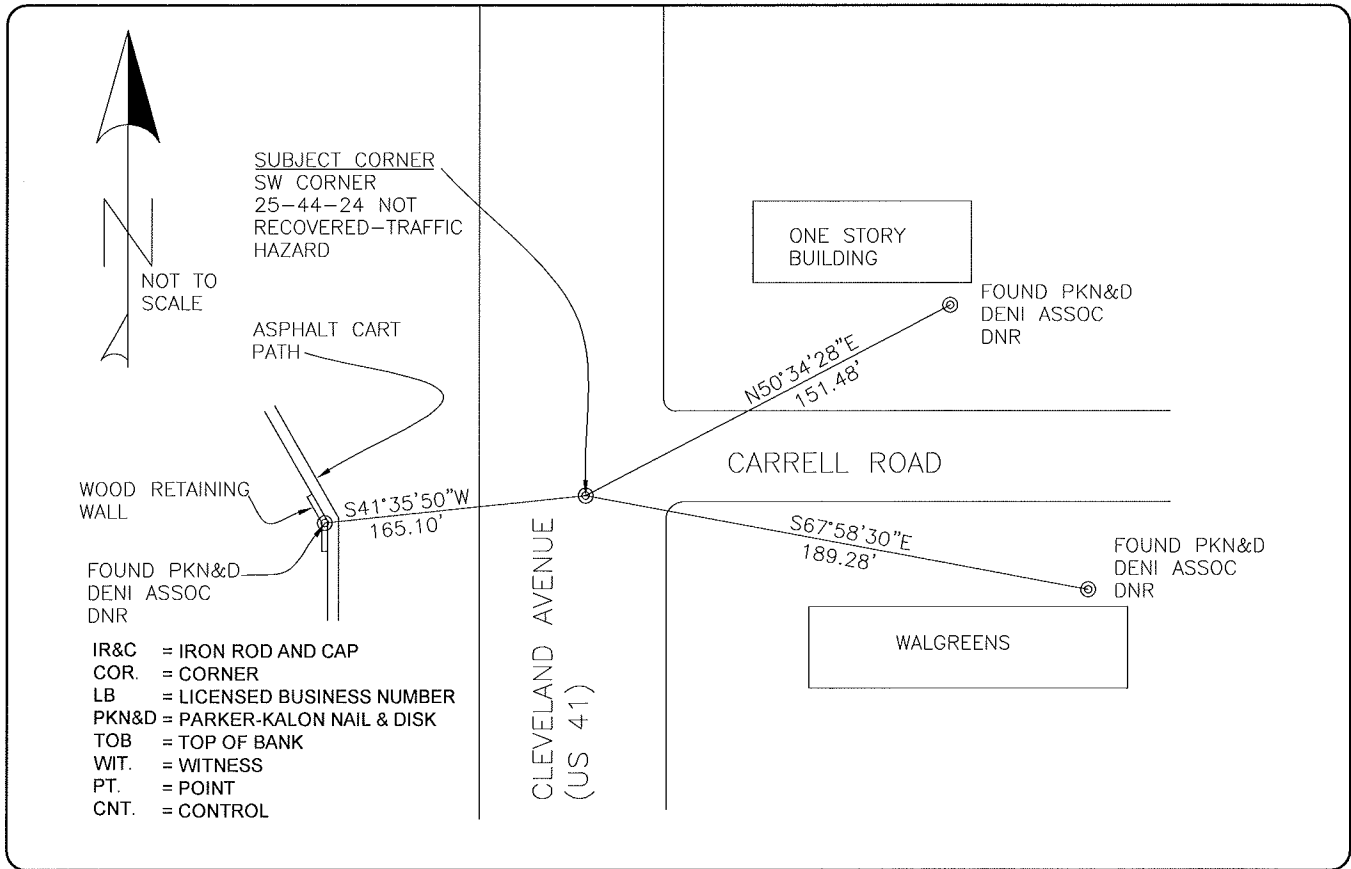


**LAND CORNER RECORD**

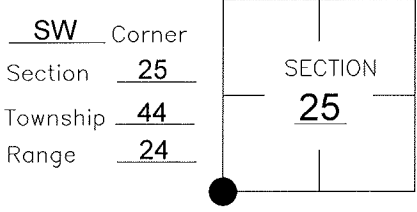
**PUBLIC WORKS  
LEE COUNTY, FLORIDA**

Address - 1500 Monroe St., Ft. Myers, Fla. 33901

Phone : (239) 479-8900



**CORNER DESCRIPTION**



GENERALLY ACCEPTED CORNER BY LOCAL SURVEYORS.  
 REFERENCES FOUND AS SHOWN ON CCR# 057322.  
 HELD COORDINATE VALUES IN CCR# 057322.

**HORIZONTAL POSITION INFORMATION**

Florida West Zone, NAD 1983(1990 Adjustment)  
 Northing(ft) 828007.471 Easting(ft) 697993.122  
 Latitude 26°36'41.73" N Longitude 081°52'19.15" W  
 Scale Factor 0.99994

EXISTING CERTIFIED CORNER RECORDS

Document No.	Date
<u>057322</u>	<u>08-09-96</u>
<u>0049266</u>	<u>07-22-94</u>

The above documents are based on FDEP Bureau of Surveying and Mapping Record Information.

I hereby certify the monument and accessories shown above were field located on 04-06-05.

*[Signature]*  
**DARREN TOWNSEND**  
 Professional Surveyor and Mapper  
 Florida Certificate No. 6476  
 Date Signed 8/22/05  
 COONER & ASSOC, INC  
 5670 ZIP DRIVE  
 Fort Myers, Florida 33905  
 Phone: (239) 277-0722

POINT NO. 9543

BLM REFERENCE NO. T44SR24E600200