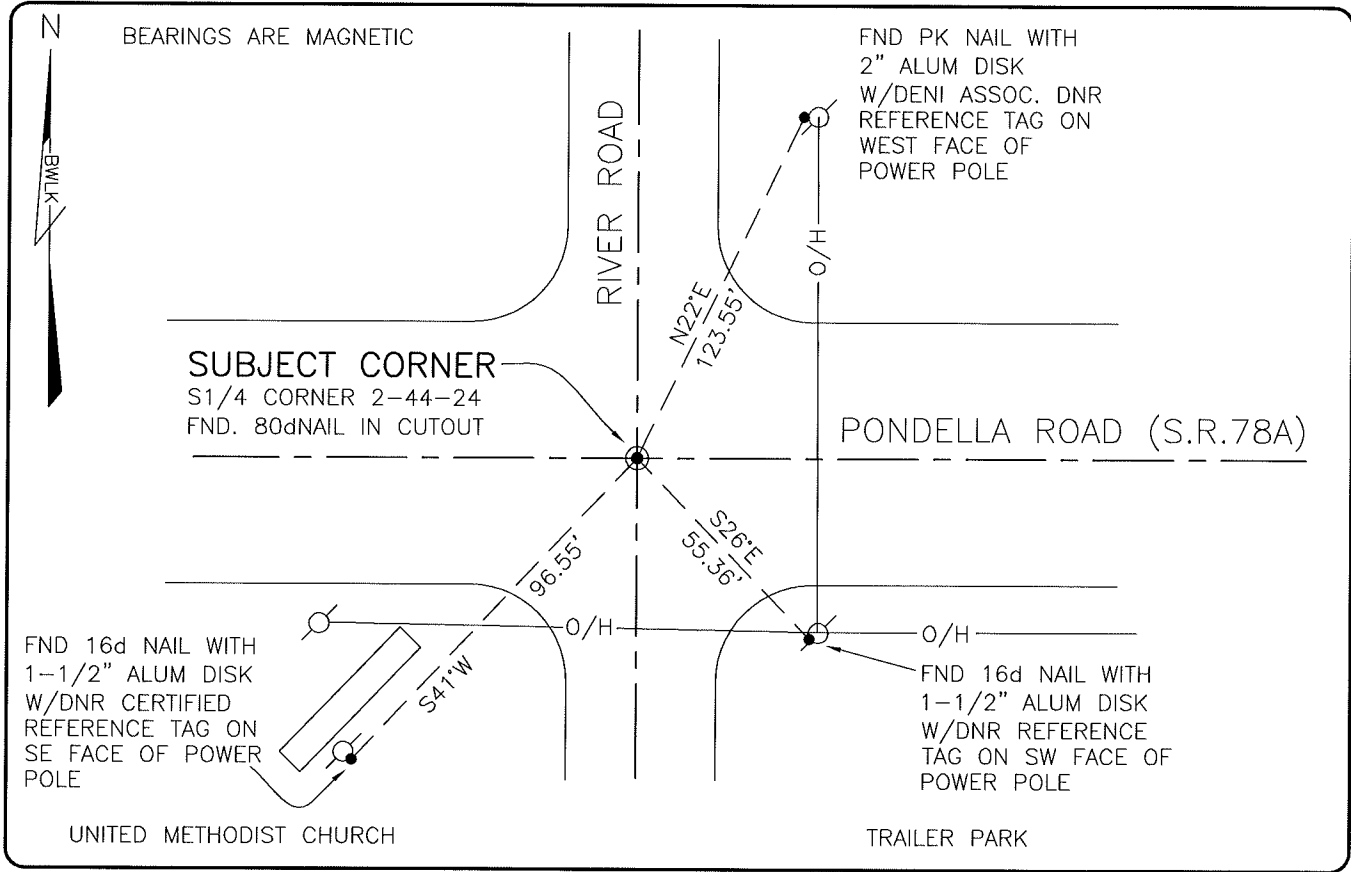


LAND CORNER RECORD

**PUBLIC WORKS
LEE COUNTY, FLORIDA**

Address -- 1500 Monroe St., Ft. Myers, Fla. 33901

Phone : (239) 479-8900

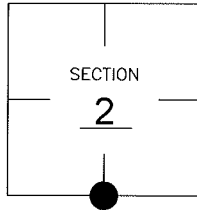


COMMENTS:

FOUND CORNER AND ALL REFERENCES AS SHOWN ON CCR 55651. CONFIRMED AND HELD CO-ORDINATE VALUES IN CCR 55651.

CORNER DESCRIPTION

S1/4 Corner
Section 2
Township 44
Range 24



HORIZONTAL POSITION INFORMATION

Florida West Zone, NAD 1983(1990 Adjustment)
Northing(ft) 848260.69 Easting(ft) 694364.30
Latitude 26°40'02.35429" N. Longitude 81°52'58.92502" W.
Scale Factor .99994

EXISTING CERTIFIED CORNER RECORDS

Document No.	Date
<u>27464</u>	<u>9-16-87</u>
<u>32005</u>	<u>8-29-88</u>
<u>55651</u>	<u>1-30-96</u>
_____	_____
_____	_____

The above documents are based on FDEP Bureau of Surveying and Mapping Record Information.

I hereby certify the monument and accessories shown above were field located on 8-04-05.

Scott C. Whitaker
SCOTT C. WHITAKER
Professional Surveyor and Mapper
Florida Certificate No. 4324
Date Signed 8-04-05

BEAN, WHITAKER, LUTZ & KAREH, INC. (LB 4919)
13041 McGregor Boulevard
Fort Myers, Florida 33919-5910
Phone: (239) 481-1331

POINT NO. 10086

BLM REFERENCE NO. T44SR24E540600