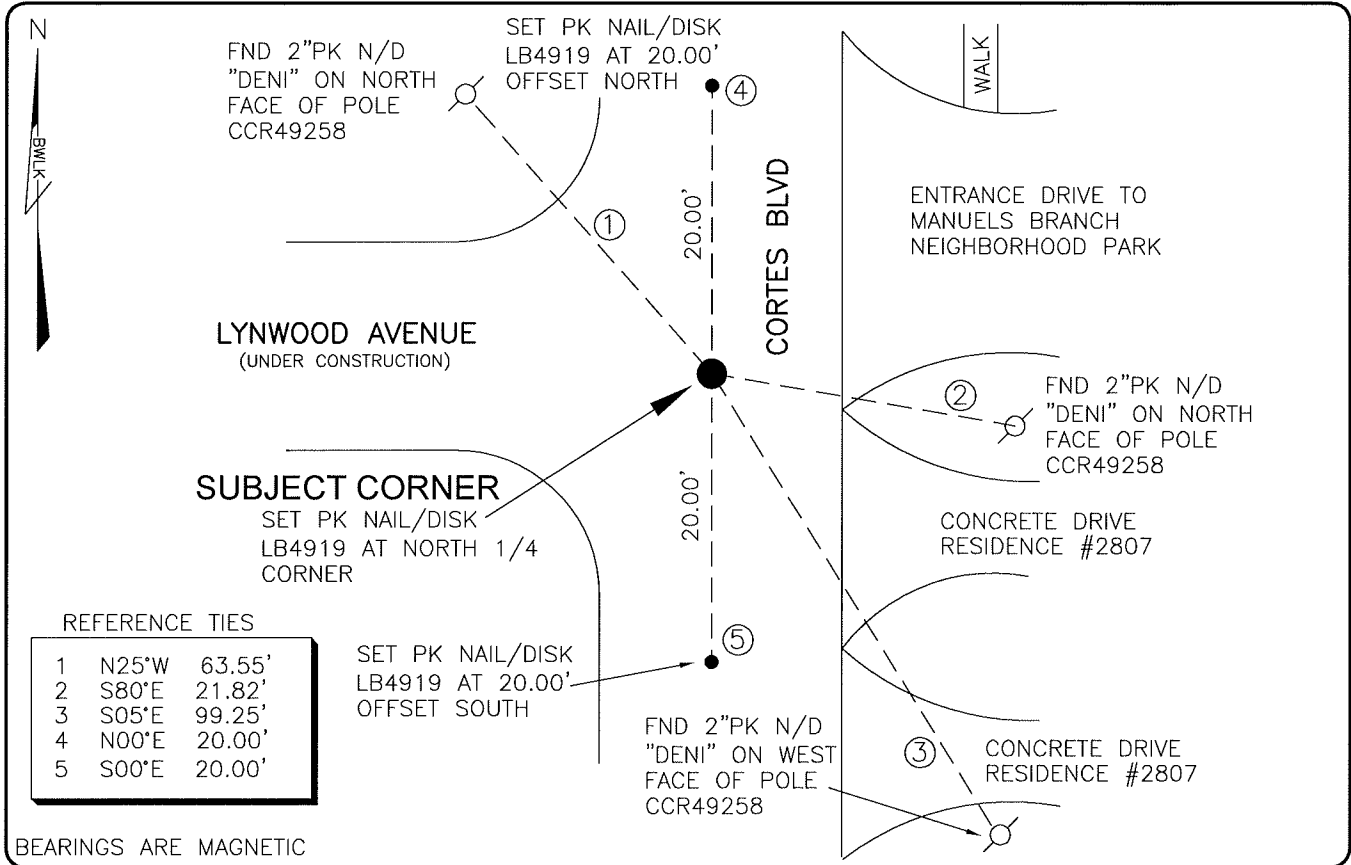


LAND CORNER RECORD

**PUBLIC WORKS
LEE COUNTY, FLORIDA**

Address – 1500 Monroe St., Ft. Myers, Fla. 33901

Phone : (239) 479-8900

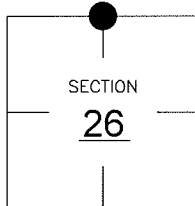


BEARINGS ARE MAGNETIC

COMMENTS:
CORNER DESTROYED BY CONSTRUCTION. RESET PK NAIL/DISK LB4919 BASED ON EXISTING REFERENCE TIES AS SHOWN IN CCR49258 AND VERIFIED CO-ORDINATES .

CORNER DESCRIPTION

N1/4 Corner
Section 26
Township 44
Range 24



HORIZONTAL POSITION INFORMATION

Florida West Zone, NAD 1983(1990 Adjustment)
 Northing(ft) 833267.02 Easting(ft) 695258.66
 Latitude 26d37'33.84855" N. Longitude 81d52'49.22080" W.
 Scale Factor 0.99994

EXISTING CERTIFIED CORNER RECORDS

Document No.	Date
<u>49258</u>	<u>7-14-94</u>

The above documents are based on FDEP Bureau of Surveying and Mapping Record Information.

I hereby certify the monument and accessories shown above were field located on 7-14-05.

Scott C. Whitaker
SCOTT C. WHITAKER
 Professional Surveyor and Mapper
 Florida Certificate No. 4324
 Date Signed 8-06-05

BEAN, WHITAKER, LUTZ & KAREH, INC. (LB 4919)
 13041 McGregor Boulevard
 Fort Myers, Florida 33919-5910
 Phone: (239) 481-1331

POINT NO. 9253

BLM REFERENCE NO. T44SR24E540300