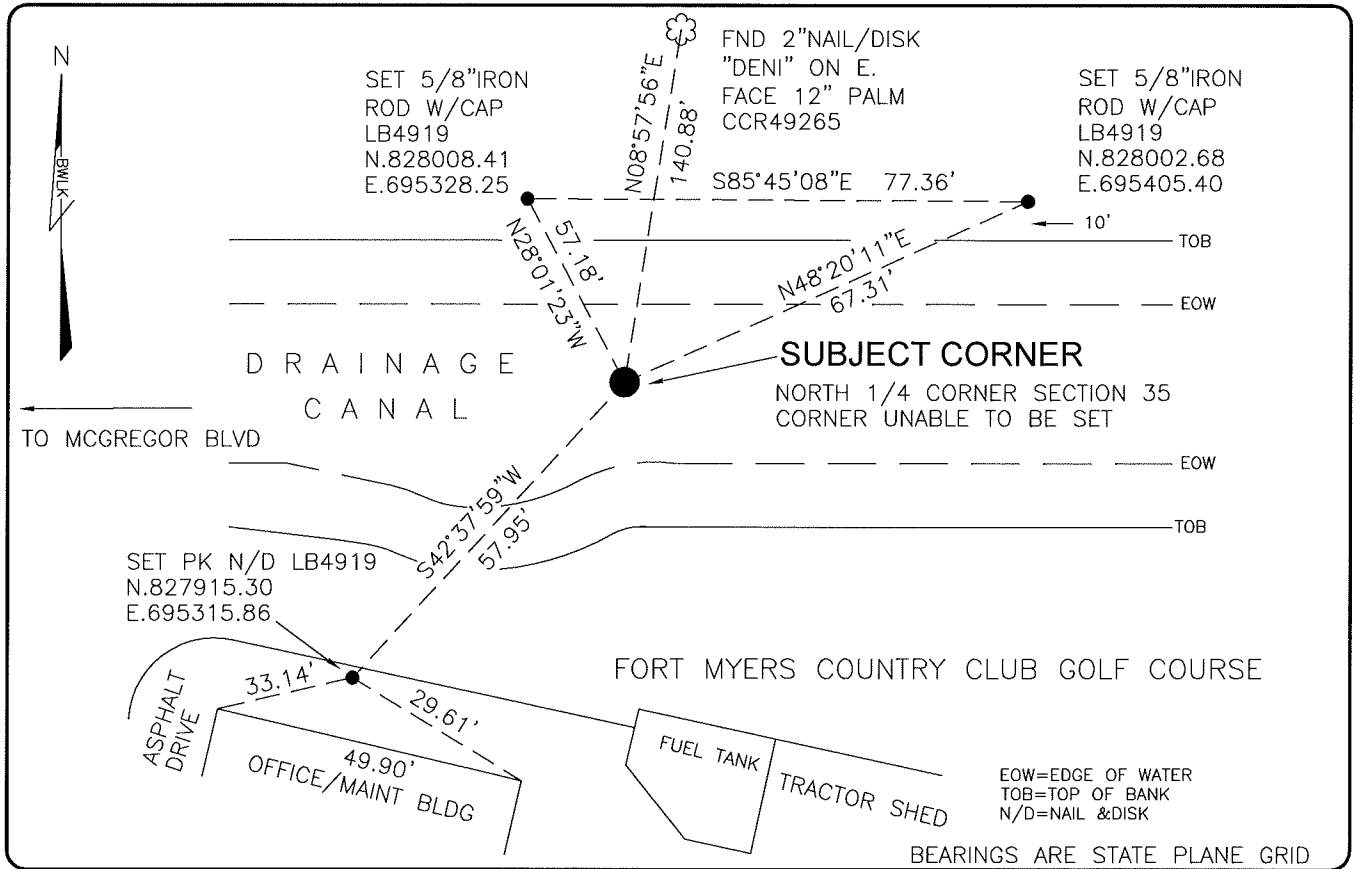


**LAND CORNER RECORD**

**PUBLIC WORKS  
LEE COUNTY, FLORIDA**

Address - 1500 Monroe St., Ft. Myers, Fla. 33901

Phone : (239) 479-8900

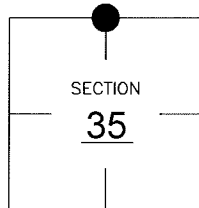


**COMMENTS:**

CORNER UNABLE TO BE SET. CORNER FALLS IN DRAINAGE CANAL. FOUND ALL REFERENCES WHICH WERE TO OFFSET MONUMENTS WHICH ARE NOW GONE DUE TO DITCH MAINTENANCE. HELD CO-ORDINATE VALUE AS SHOWN IN CCR49265.

**CORNER DESCRIPTION**

N1/4 Corner  
 Section 35  
 Township 44  
 Range 24



**HORIZONTAL POSITION INFORMATION**

Florida West Zone, NAD 1983(1990 Adjustment)

Northing(ft) 827957.94 Easting(ft) 695355.11

Latitude 26d36'41.26628" N. Longitude 81d52'48.21283" W.

Scale Factor 0.99994

**EXISTING CERTIFIED CORNER RECORDS**

Document No.	Date
<u>49265</u>	<u>7-14-94</u>

The above documents are based on FDEP Bureau of Surveying and Mapping Record Information.

I hereby certify the monument and accessories shown above were field located on 7-19-05.

*Scott C. Whitaker*

**SCOTT C. WHITAKER**  
 Professional Surveyor and Mapper  
 Florida Certificate No. 4324  
 Date Signed 8-06-05

BEAN, WHITAKER, LUTZ & KAREH, INC. (LB 4919)  
 13041 McGregor Boulevard  
 Fort Myers, Florida 33919-5910  
 Phone: (239) 481-1331

POINT NO. 9257

BLM REFERENCE NO. T44SR24E540200