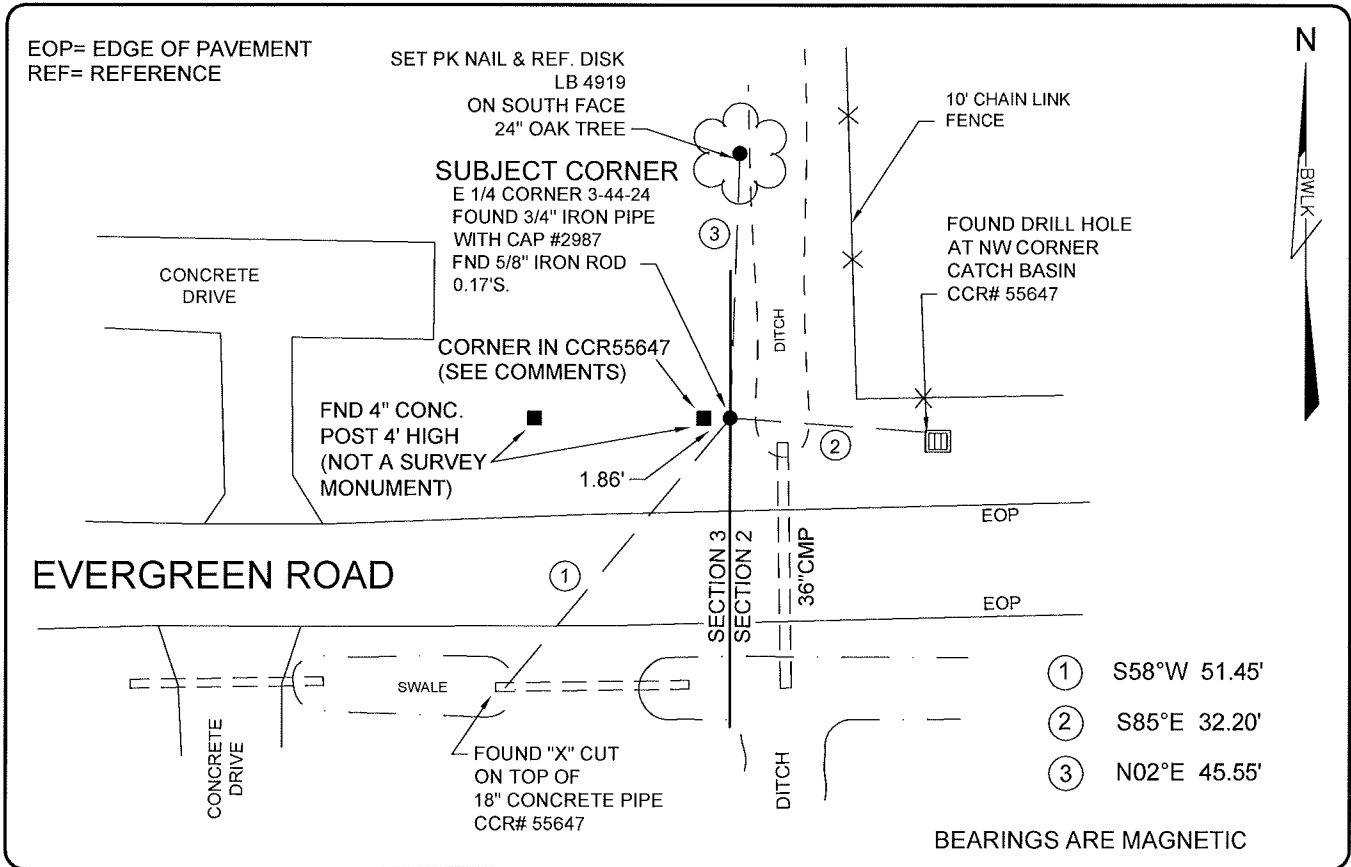


LAND CORNER RECORD

**PUBLIC WORKS
LEE COUNTY, FLORIDA**

Address - 1500 Monroe St., Ft. Myers, Fla. 33901

Phone : (239) 479-8900



COMMENTS:

THE SUBJECT CORNER AND (2) OUT OF (3) REFERENCES WERE FOUND ACCORDING WITH CCR#55647. THERE IS A 3/4" IRON PIPE (CAP #2987-SEE CCR#36560) WHICH WAS DETERMINED TO BE THE SECTION CORNER CONTRARY TO CCR#55647 AND CCR#15280. THIS PIPE IS IN HARMONY WITH HISTORICAL RECORDS AND THE R/W MAPS FOR PONDELLA ROAD.

HORIZONTAL POSITION INFORMATION

Florida West Zone, NAD 1983(1990 Adjustment)

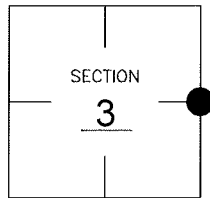
Northing(ft) 850880.19 Easting(ft) 691711.51

Latitude 26°40'28.32098" N. Longitude 81°53'28.14361" W.

Scale Factor 0.99994

CORNER DESCRIPTION

E 1/4 Corner
Section 3
Township 44
Range 24



EXISTING CERTIFIED CORNER RECORDS

Document No.	Date
55647 CALLS FOR POST	02-23-96
36560 CALLS FOR PIPE	04-02-90
32004 CALLS FOR 1/2" PIN	04-11-89
15280 CALLS FOR POST	10-04-82

The above documents are based on FDEP Bureau of Surveying and Mapping Record Information.

I hereby certify the monument and accessories shown above were field located on 8-10-05

Scott C. Whitaker
SCOTT C. WHITAKER
Professional Surveyor and Mapper
Florida Certificate No. 4324
Date Signed 8-11-05

BEAN, WHITAKER, LUTZ & KAREH, INC. (LB 4919)
13041 McGregor Boulevard
Fort Myers, Florida 33919-5910
Phone: (239) 481-1331

POINT NO. 10132

BLM REFERENCE NO. T44SR24E500640