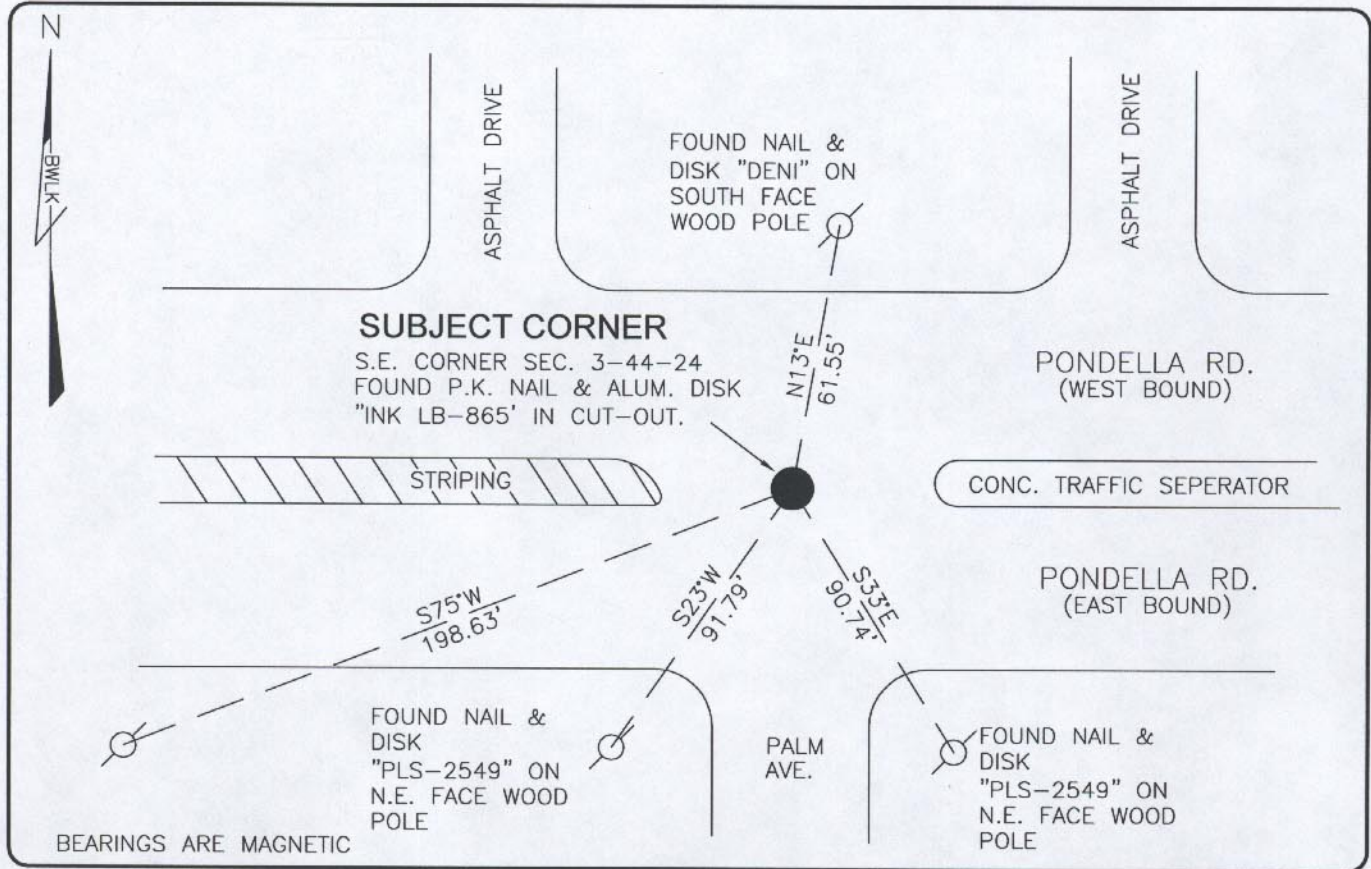


**LAND CORNER RECORD**

**PUBLIC WORKS  
LEE COUNTY, FLORIDA**

Address - 1500 Monroe St., Ft. Myers, Fla. 33901

Phone : (239) 479-8900



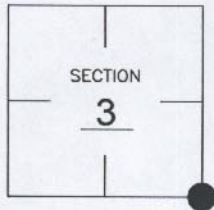
BEARINGS ARE MAGNETIC

**COMMENTS:**

FOUND PK NAIL & DISK "INK LB-856" VERIFIED LOCATION BY REFERENCES FROM C.C.R.#55650.

**CORNER DESCRIPTION**

SE Corner  
Section 3  
Township 44  
Range 24



**HORIZONTAL POSITION INFORMATION**

Florida West Zone, NAD 1983(1990 Adjustment)

Northing(ft) 848238.61 Easting(ft) 671723.77

Latitude 26°40'02.1587 Longitude 81°53'28.0333

Scale Factor 0.99994

**EXISTING CERTIFIED CORNER RECORDS**

| Document No. | Date            |
|--------------|-----------------|
| <u>37087</u> | <u>10-25-90</u> |
| <u>39862</u> | <u>8-20-91</u>  |
| <u>55650</u> | <u>2-23-96</u>  |
|              |                 |
|              |                 |

The above documents are based on FDEP Bureau of Surveying and Mapping Record Information.

I hereby certify the monument and accessories shown above were field located on 8-06-04

*Scott C. Whitaker*  
**SCOTT C. WHITAKER**  
Professional Surveyor and Mapper  
Florida Certificate No. 4324  
Date Signed 4/12/05

BEAN, WHITAKER, LUTZ & KAREH, INC. (LB 4919)  
13041 McGregor Boulevard  
Fort Myers, Florida 33919-5910  
Phone: (239) 481-1331

POINT NO. 10085

BLM REFERENCE NO. T44SR24E500600