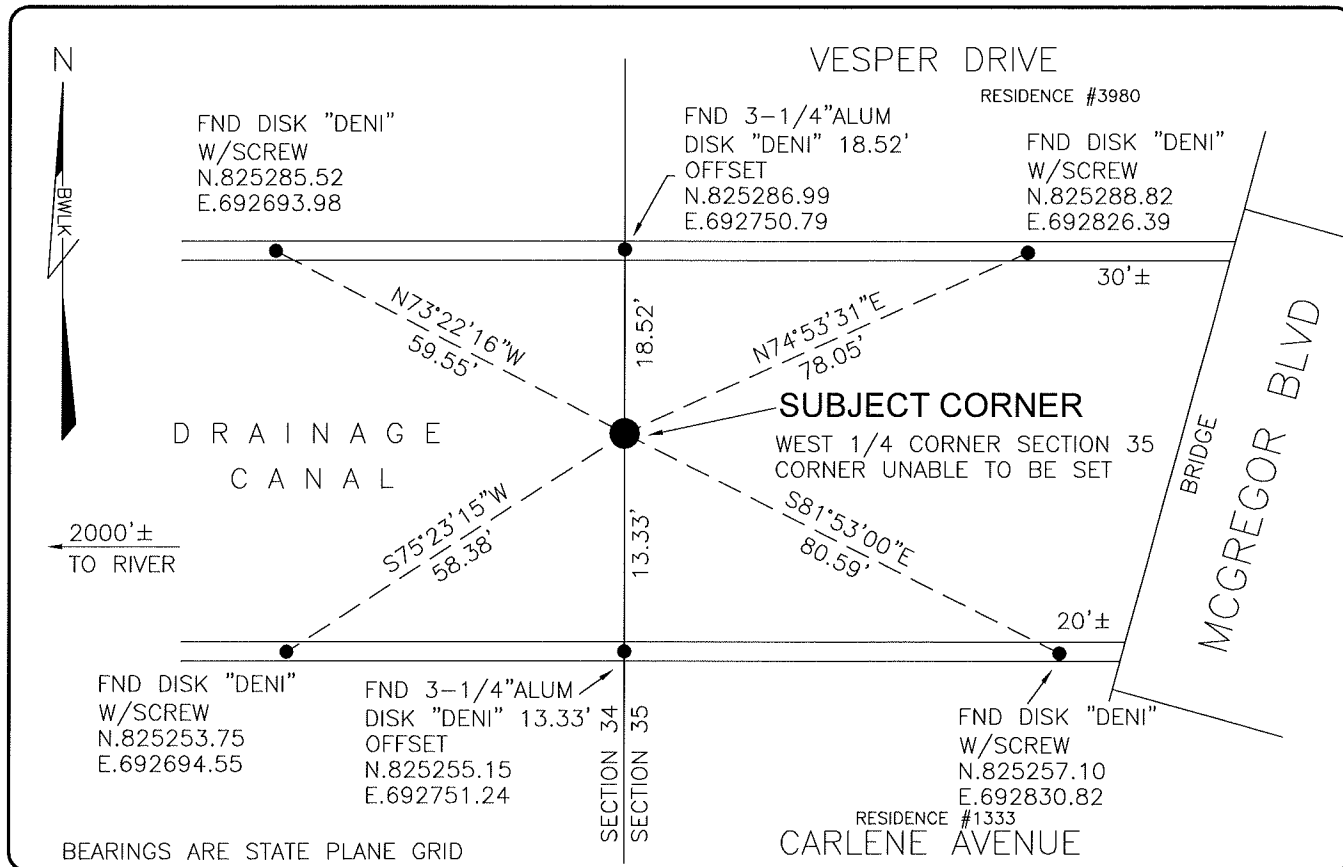


LAND CORNER RECORD

**PUBLIC WORKS
LEE COUNTY, FLORIDA**

Address - 1500 Monroe St., Ft. Myers, Fla. 33901

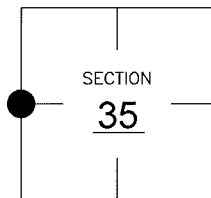
Phone : (239) 479-8900



COMMENTS:
CORNER UNABLE TO BE SET. CORNER FALLS IN DRAINAGE CANAL. FOUND ALL REFERENCES AND CONFIRMED CO-ORDINATES AS SHOWN IN CCR49267.

CORNER DESCRIPTION

W1/4 Corner
Section 35
Township 44
Range 24



HORIZONTAL POSITION INFORMATION

Florida West Zone, NAD 1983(1990 Adjustment)
Northing(ft) 825268.48 Easting(ft) 692751.04
Latitude 26d36'14.65307" N. Longitude 81d53'16.93098" W.
Scale Factor 0.99994

EXISTING CERTIFIED CORNER RECORDS

Document No.	Date
<u>49267</u>	<u>7-15-94</u>

The above documents are based on FDEP Bureau of Surveying and Mapping Record Information.

I hereby certify the monument and accessories shown above were field located on 7-20-05.

Scott C. Whitaker
SCOTT C. WHITAKER
Professional Surveyor and Mapper
Florida Certificate No. 4324
Date Signed 8-06-05

BEAN, WHITAKER, LUTZ & KAREH, INC. (LB 4919)
13041 McGregor Boulevard
Fort Myers, Florida 33919-5910
Phone: (239) 481-1331

POINT NO. 9269

BLM REFERENCE NO. T44SR24E500140