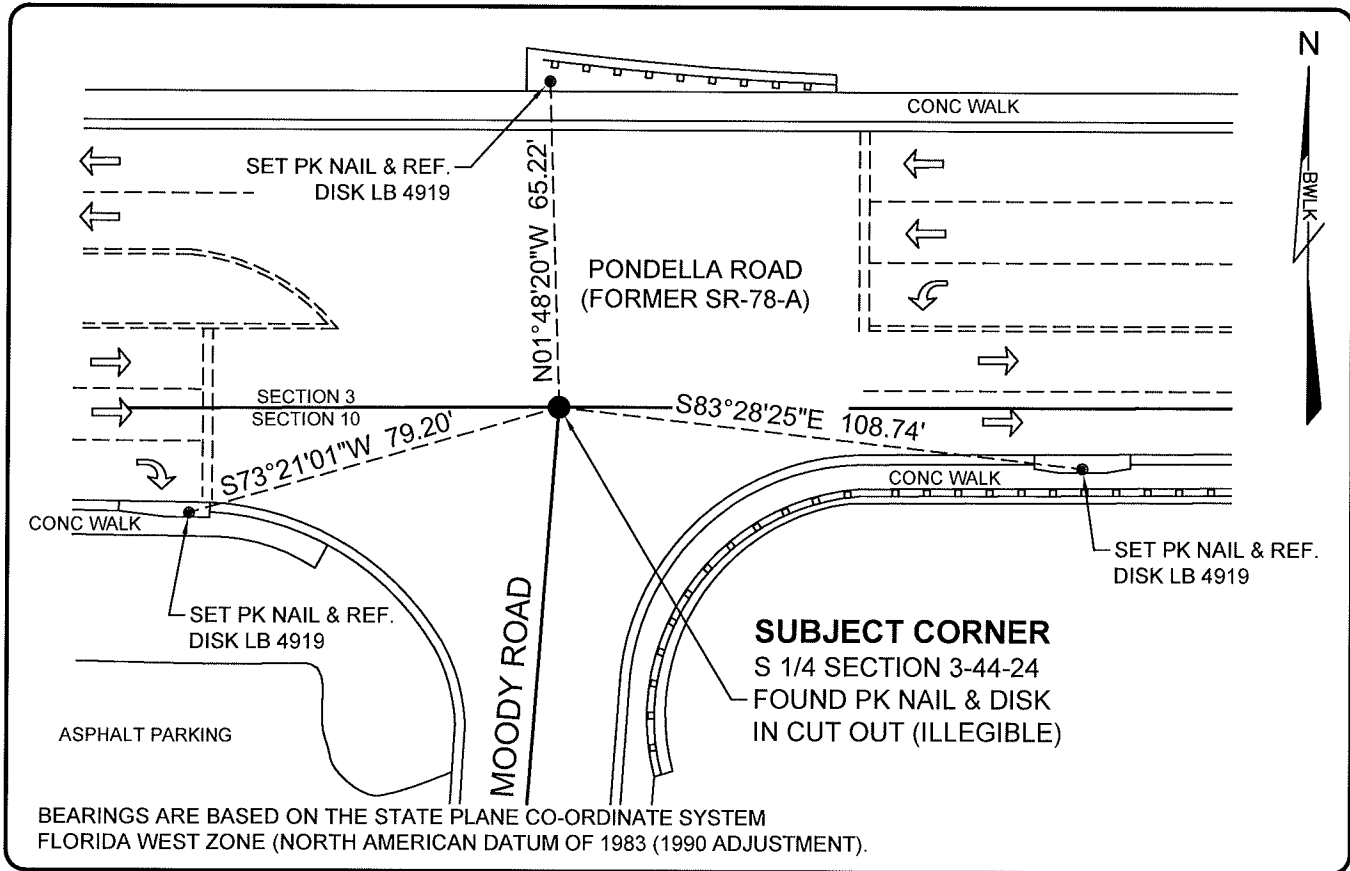


LAND CORNER RECORD

PUBLIC WORKS
 LEE COUNTY, FLORIDA
 Address - 1500 Monroe St., Ft. Myers, Fla. 33901 Phone : (239) 479-8900

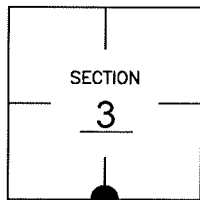


COMMENTS:

FOUND PK NAIL AND DISK (ILLEGIBLE STAMPING) IN ASPHALT CUT-OUT. CONFIRMED LOCATION WITH R/W MAPS FOR S.R.78 AND PONDELLA ROAD. NO REFERENCES WERE FOUND AS SHOWN IN CCR# 39861.

CORNER DESCRIPTION

S 1/4 Corner
 Section 3
 Township 44
 Range 24



HORIZONTAL POSITION INFORMATION

Florida West Zone, NAD 1983(1990 Adjustment)
 Northing(ft) 848241.53 Easting(ft) 689070.03
 Latitude 26°40'02.20915" Longitude 81°53'57.28701"
 Scale Factor 0.99994

EXISTING CERTIFIED CORNER RECORDS

Document No.	Date
39861	8-20-91

The above documents are based on FDEP Bureau of Surveying and Mapping Record Information.

I hereby certify the monument and accessories shown above were field located on 08-12-05.

Scott C. Whitaker
 SCOTT C. WHITAKER
 Professional Surveyor and Mapper
 Florida Certificate No. 4324
 Date Signed 08-12-05

BEAN, WHITAKER, LUTZ & KAREH, INC. (LB 4919)
 13041 McGregor Boulevard
 Fort Myers, Florida 33919-5910
 Phone: (239) 481-1331

POINT NO. 9327

BLM REFERENCE NO. T44SR24E440600