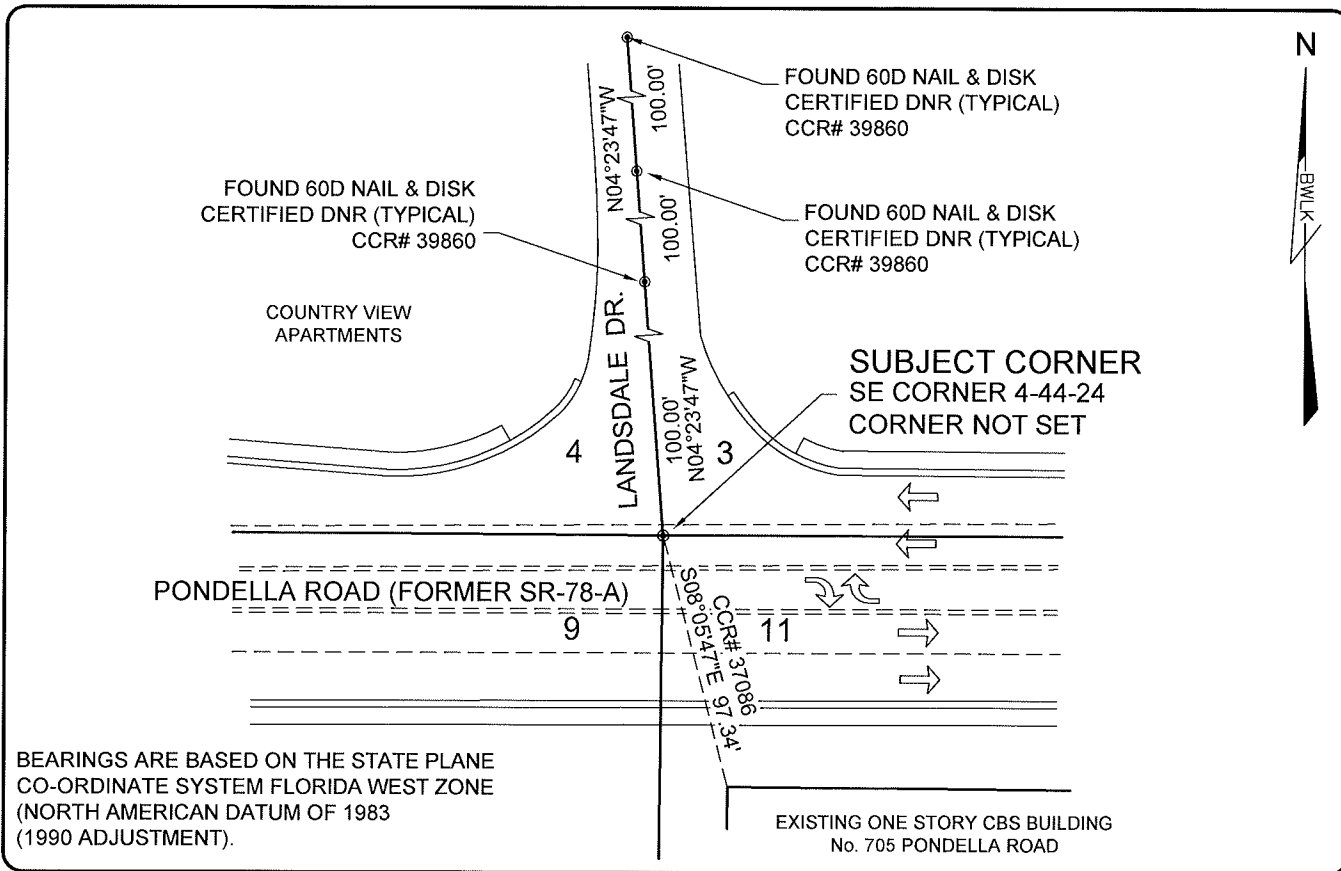


**LAND CORNER RECORD**

**PUBLIC WORKS  
LEE COUNTY, FLORIDA**

Address - 1500 Monroe St., Ft. Myers, Fla. 33901

Phone : (239) 479-8900



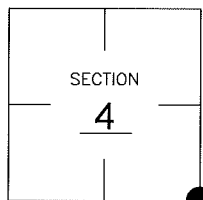
BEARINGS ARE BASED ON THE STATE PLANE CO-ORDINATE SYSTEM FLORIDA WEST ZONE (NORTH AMERICAN DATUM OF 1983 (1990 ADJUSTMENT)).

**COMMENTS:**

THE SUBJECT CORNER WAS NOT FOUND, UNABLE TO SET CORNER DUE TO TRAFFIC HAZARD. CONFIRMED LOCATION WITH R/W MAPS FOR S.R. 78 AND PONDEZZA ROAD. FOUND ALL REFERENCES ACCORDING TO CCR# 39860, FOUND (1) OUT OF (3) REFERENCES ACCORDING TO CCR# 37086

**CORNER DESCRIPTION**

SE Corner  
Section 4  
Township 44  
Range 24



**HORIZONTAL POSITION INFORMATION**

Florida West Zone, NAD 1983(1990 Adjustment)  
Northing(ft) 848244.01 Easting(ft) 686414.55  
Latitude 26°40'02.25364" Longitude 81°54'26.55984"  
Scale Factor 0.99994

**EXISTING CERTIFIED CORNER RECORDS**

Document No.	Date
<u>0039860</u>	<u>08-20-91</u>
<u>0037086</u>	<u>10-25-90</u>

The above documents are based on FDEP Bureau of Surveying and Mapping Record Information.

I hereby certify the monument and accessories shown above were field located on 08-11-2005.

*Scott C. Whitaker*

**SCOTT C. WHITAKER**  
Professional Surveyor and Mapper  
Florida Certificate No. 4324  
Date Signed 08-11-2005

BEAN, WHITAKER, LUTZ & KAREH, INC. (LB 4919)  
13041 McGregor Boulevard  
Fort Myers, Florida 33919-5910  
Phone: (239) 481-1331

POINT NO. 10130

BLM REFERENCE NO. T44SR24E400600