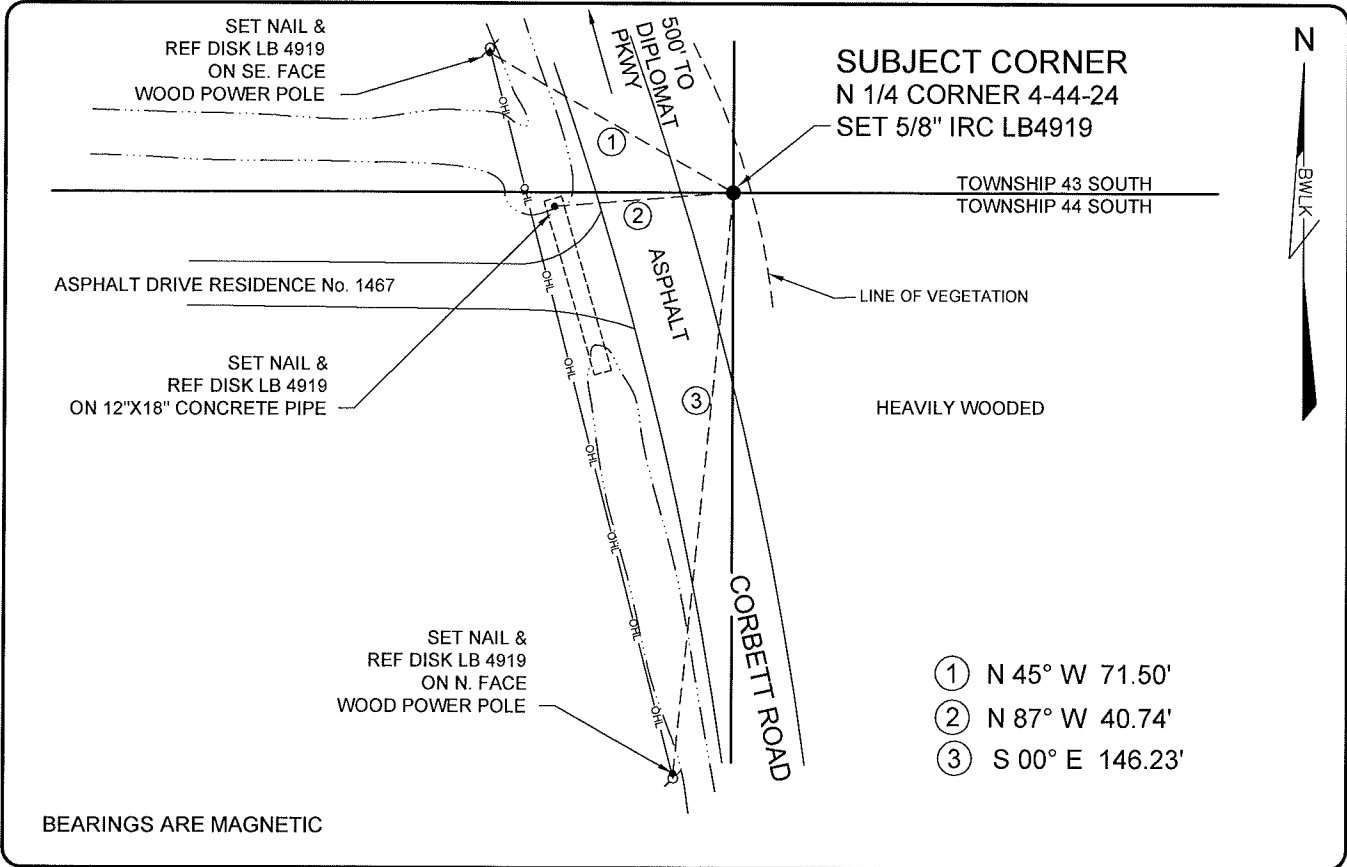


LAND CORNER RECORD

**PUBLIC WORKS
LEE COUNTY, FLORIDA**

Address - 1500 Monroe St., Ft. Myers, Fla. 33901

Phone : (239) 479-8900



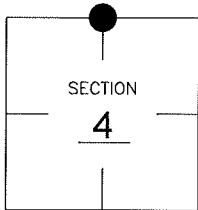
BEARINGS ARE MAGNETIC

COMMENTS:

THE SUBJECT CORNER AND REFERENCES WERE NOT FOUND. RESET CORNER BASED ON HISTORICAL RECORDS AND PREVIOUS SURVEY PERFORMED IN 1982.

CORNER DESCRIPTION

N 1/4 Corner
Section 4
Township 44
Range 24



HORIZONTAL POSITION INFORMATION

Florida West Zone, NAD 1983(1990 Adjustment)
Northing(ft) 853673.42 Easting(ft) 683355.73
Latitude 26°40'56.04731" N. Longitude 81°55'00.23991" W.
Scale Factor 0.99994

EXISTING CERTIFIED CORNER RECORDS

Document No.	Date
<u>14516</u>	<u>06-16-82</u>

The above documents are based on FDEP Bureau of Surveying and Mapping Record Information.

I hereby certify the monument and accessories shown above were field located on 08-11-05.

Scott C. Whitaker
SCOTT C. WHITAKER
Professional Surveyor and Mapper
Florida Certificate No. 4324
Date Signed 08-11-05

BEAN, WHITAKER, LUTZ & KAREH, INC. (LB 4919)
13041 McGregor Boulevard
Fort Myers, Florida 33919-5910
Phone: (239) 481-1331

POINT NO. 10127

BLM REFERENCE NO. T44SR24E340700