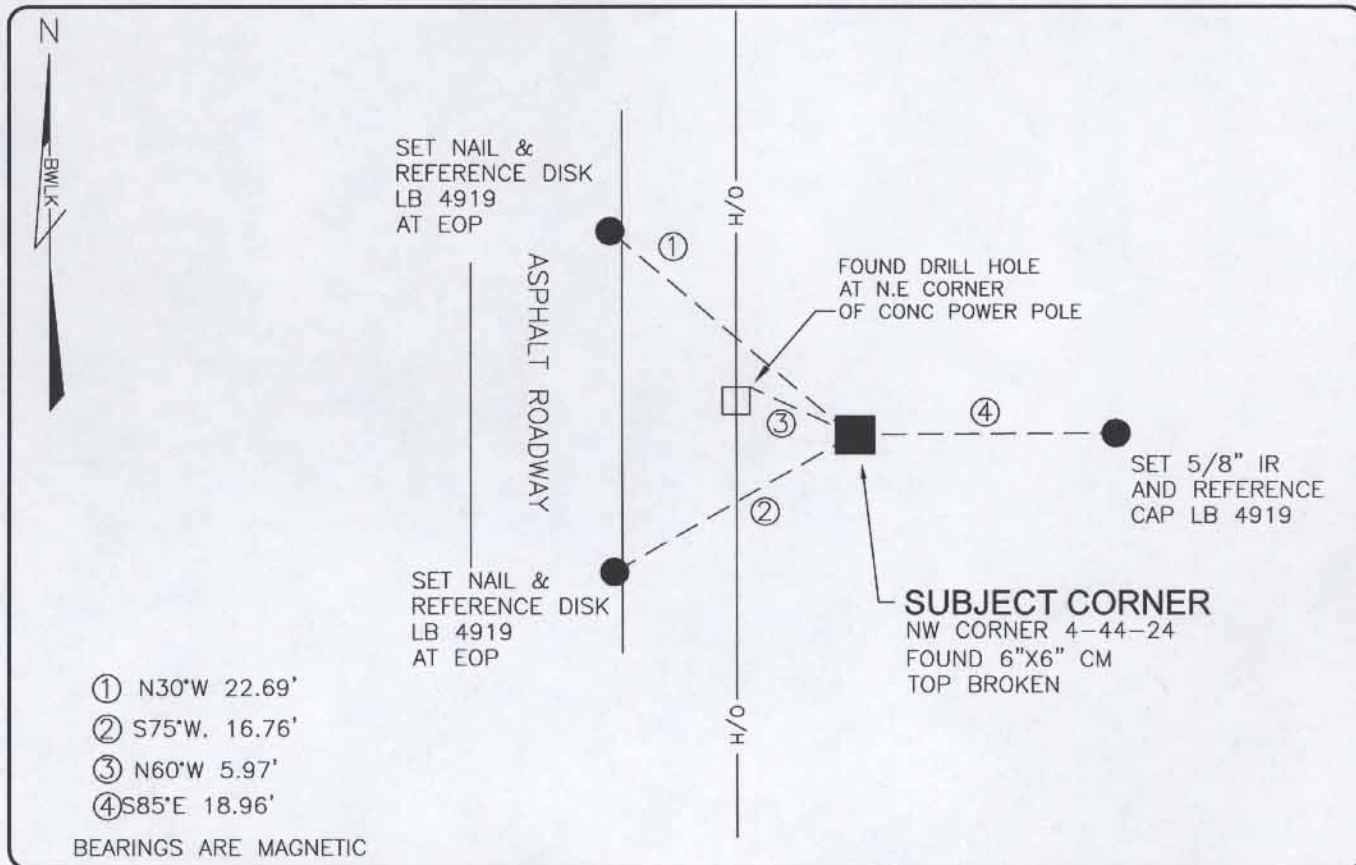


LAND CORNER RECORD

PUBLIC WORKS
LEE COUNTY, FLORIDA

Address - 1500 Monroe St., Ft. Myers, Fla. 33901

Phone : (239) 479-8900

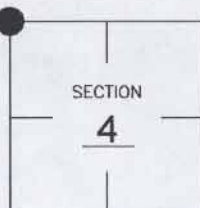


COMMENTS:

FOUND CORNER AND ONE REFERENCE AS SHOWN ON C.C.R.#14514, SET ADDITIONAL REFERENCES

CORNER DESCRIPTION

NW Corner
Section 4
Township 44
Range 24



HORIZONTAL POSITION INFORMATION

Florida West Zone, NAD 1983(1990 Adjustment)
Northing(ft) 853663.89 Easting(ft) 680691.50
Latitude 26°40'55.9693" Longitude 81°55'29.6132"
Scale Factor 0.99994

EXISTING CERTIFIED CORNER RECORDS

Document No.	Date
<u>14514</u>	<u>6-16-82</u>
<u>19091</u>	<u>11-07-83</u>

The above documents are based on FDEP Bureau of Surveying and Mapping Record Information.

I hereby certify the monument and accessories shown above were field located on 6-14-04

Scott C. Whitaker

SCOTT C. WHITAKER
Professional Surveyor and Mapper
Florida Certificate No. 4324
Date Signed 4/12/05

BEAN, WHITAKER, LUTZ & KAREH, INC. (LB 4919)
13041 McGregor Boulevard
Fort Myers, Florida 33919-5910
Phone: (239) 481-1331

POINT NO. 9127

BLM REFERENCE NO. T44SR24E300700