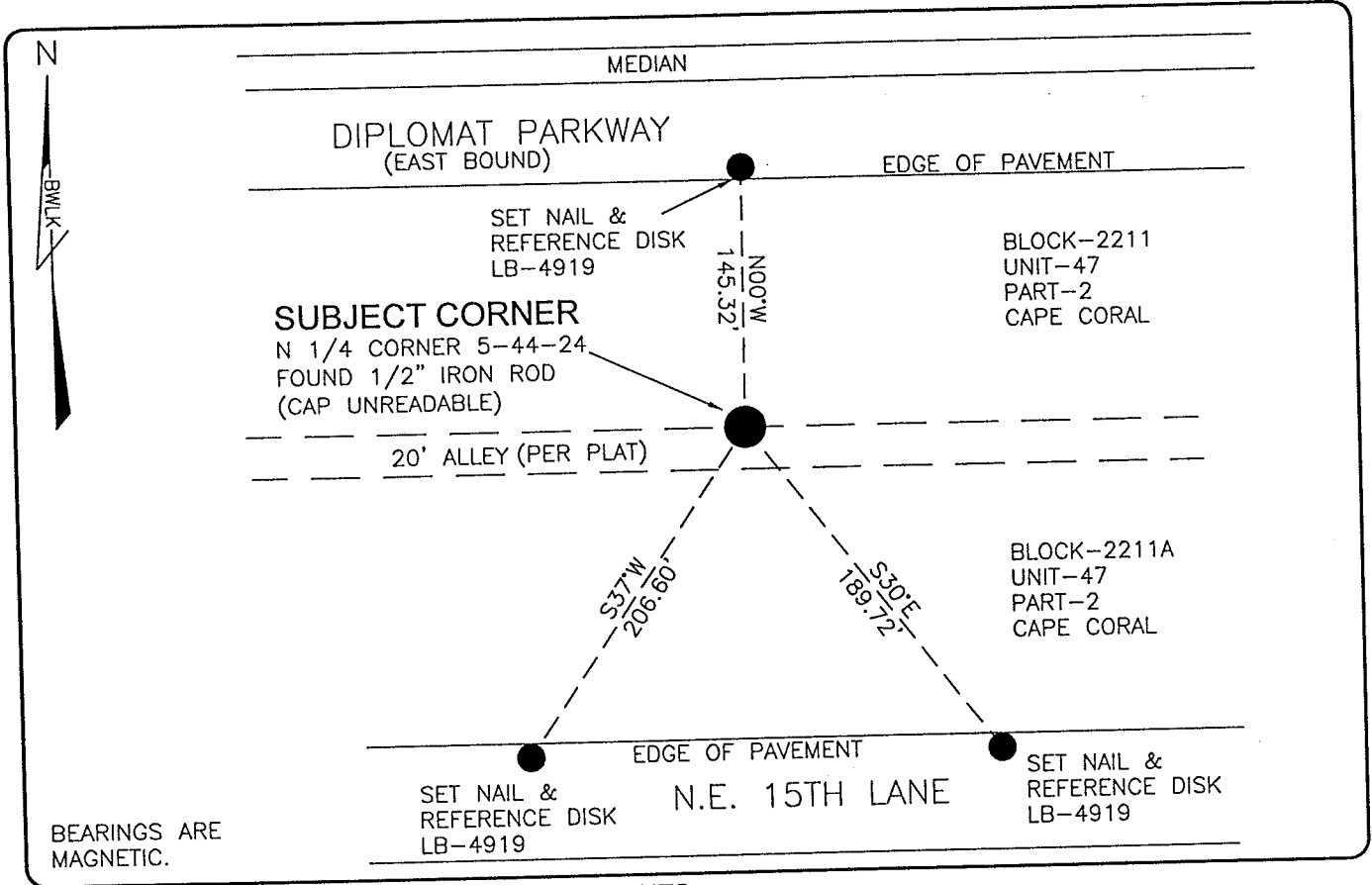


LAND CORNER RECORD

**PUBLIC WORKS
LEE COUNTY, FLORIDA**

Address - 1500 Monroe St., Ft. Myers, Fla. 33901

Phone : (239) 479-8900



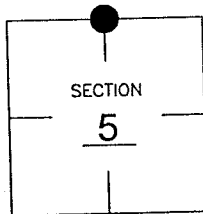
BEARINGS ARE
MAGNETIC.

COMMENTS:

CORNER FOUND FROM HISTORICAL RECORDS, REFERENCES FROM C.C.R.#37075 NOT RECOVERED, SET ADDITIONAL REFERENCES

CORNER DESCRIPTION

N1/4 Corner
Section 5
Township 44
Range 24



HORIZONTAL POSITION INFORMATION

Florida West Zone, NAD 1983(1990 Adjustment)
Northing(ft) 853650.09 Easting(ft) 678023.21
Latitude 26°40'55.8474" Longitude 81°55'59.0312"
Scale Factor 0.99994

EXISTING CERTIFIED CORNER RECORDS

Document No.	Date
<u>37075</u>	<u>10-25-90</u>

The above documents are based on FDEP Bureau of Surveying and Mapping Record Information.

I hereby certify the monument and accessories shown above were field located on 7-01-04

Scott C. Whitaker

SCOTT C. WHITAKER
Professional Surveyor and Mapper
Florida Certificate No. 4324
Date Signed 4/12/05

BEAN, WHITAKER, LUTZ & KAREH, INC. (LB 4919)
13041 McGregor Boulevard
Fort Myers, Florida 33919-5910
Phone: (239) 481-1331

POINT NO. 9207

BLM REFERENCE NO. T44SR24E240700