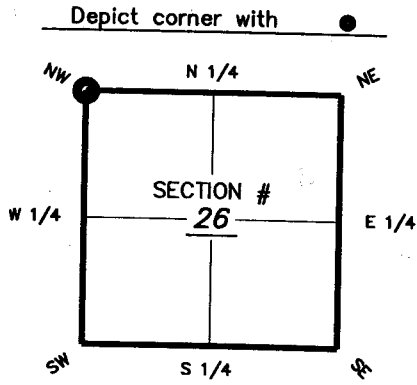


FLORIDA DEPARTMENT OF ENVIRONMENTAL PROTECTION CERTIFIED CORNER RECORD

DOC. # 091917

CORNER DESCRIPTION: MONUMENTATION DESCRIPTION (EVIDENCE FOUND OR METHOD TO SET)

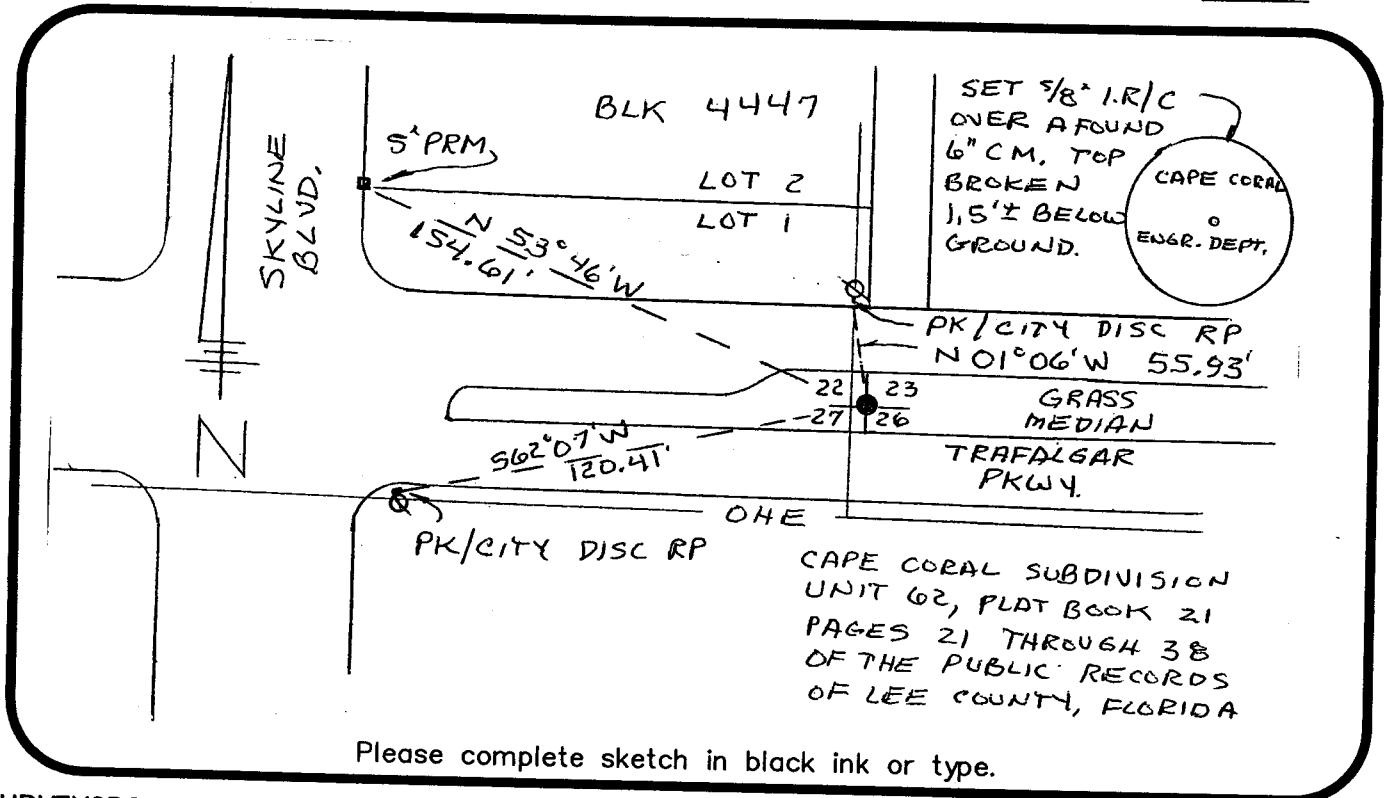


CORNER POSITION WAS DETERMINED FROM ORIGINAL SUBDIVISION REFERENCE MONUMENTS. SET AN IRON ROD, 18" LONG, WITH AN ALUMINUM CAP MARKED AS INDICATED BELOW, OVER THE BROKEN ORIGINAL CONCRETE CORNER MONUMENT.

NW corner of Section 26
Twp 44S, Rge 23E
Tallahassee Base Meridian,
LEE County(s), Florida

HORIZONTAL POSITION INFORMATION (if determined):

Latitude _____ Longitude _____
Y(NORTHING-Ft.) 832134.66 X(EASTING-Ft.) 659171.12 Zone FL W
Convergence _____ Scale factor _____
Coordinate determination (circle one): Field traverse (GPS)
Horizontal datum (circle one): NAD27 NAD83(1986) NAD83(1990) other (explain) _____
Accuracy (circle one): 1st 2nd 3rd other _____



Please complete sketch in black ink or type.

SURVEYORS CERTIFICATE:

I certify the monument and accessories indicated above were field located on 9-18-2007

Maude P. Russell
SIGNATURE 4374
CITY OF CAPE CORAL PSM NO.
FIRM OR AGENCY LB NO.
1015 CULTURAL PARK BLVD
ADDRESS
CITY CAPE CORAL STATE FL ZIP 33915
PHONE NUMBER 239-574-0701 DATE 9-25-2007

SEND ORIGINAL TO:
Department of Environmental Protection
Bureau of Surveying and Mapping
3900 Commonwealth Boulevard
Mail Station 105
Tallahassee, Florida 32399

Processed: 10-15-07 MB (D.E.P. USE ONLY)
B.L.M. - I.D. 500300
QUAD - I.D. 2110 Fort Myers SW

EMBOSSSED SEAL OVER SIGNATURE