

# FLORIDA DEPARTMENT OF ENVIRONMENTAL PROTECTION CERTIFIED CORNER RECORD

J-11

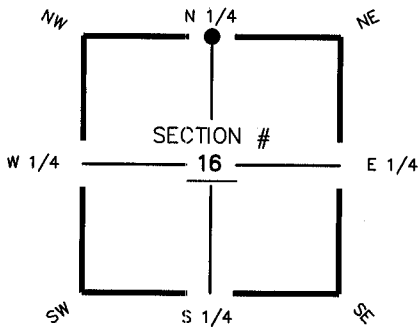
DOC. #

**080924**

CORNER DESCRIPTION:      MONUMENTATION DESCRIPTION (EVIDENCE FOUND OR METHOD TO SET)

Depict corner with

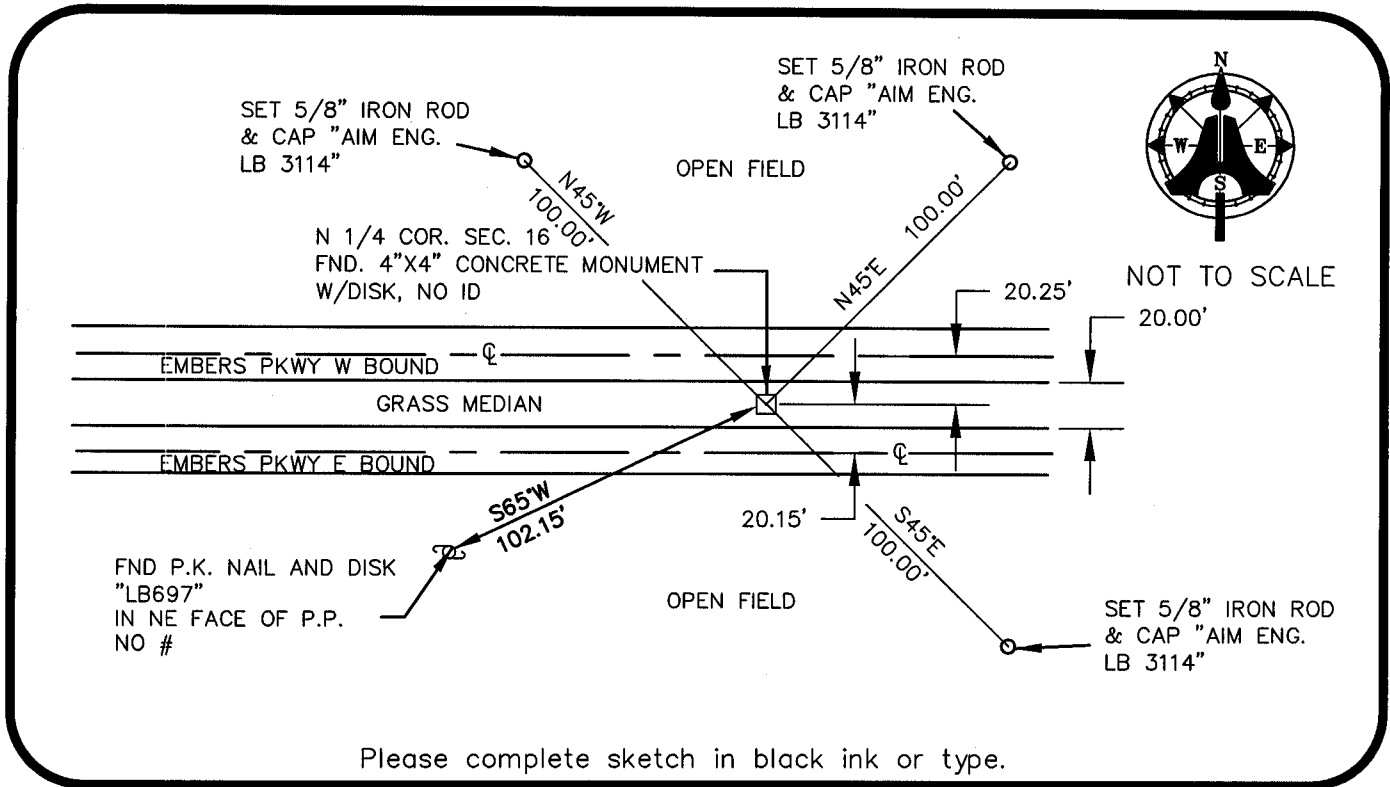
**FOUND 4"x4" CONCRETE MONUMENT W/DISK, NO ID**



N 1/4 corner of Section 16  
Twp 44 S, Rge 23 E  
Tallahassee Base Meridian,  
LEE County(s), Florida

HORIZONTAL POSITION INFORMATION ( if determined ):

Latitude 26° 39' 08.0225" N      Longitude 82° 00' 55.2897" W  
Y(NORTHING-Ft.) 842757.66      X(EASTING-Ft.) 651150.43      Zone FL W  
Convergence -00° 00' 24.8"      Scale factor 0.99994121  
Coordinate determination (circle one):      Field traverse GPS  
Horizontal datum (circle one): NAD27    NAD83(1986) NAD83(1990) other (explain)  
Accuracy (circle one):      1st      2nd      3rd      other



Please complete sketch in black ink or type.

SURVEYORS CERTIFICATE:

I certify the monument and accessories indicated above were field located on MAY 21, 2003

SIGNATURE      5688      PSM NO.  
AIM ENGINEERING & SURVEYING, INC.      LB 3114      LB NO.  
FIRM OR AGENCY  
5300 LEE BOULEVARD      ADDRESS  
LEHIGH ACRES, FLORIDA 33971-1026      CITY      STATE      ZIP  
(239) 332-4569      12/20/2003      PHONE NUMBER      DATE

SEND ORIGINAL TO:  
Department of Environmental Protection  
Bureau of Surveying and Mapping  
3900 Commonwealth Boulevard  
Mail Station 105  
Tallahassee, Florida 32399

D.E.P. USE ONLY

Processed: 12-31-2003 CH

B.L.M. - I.D. 340 500

QUAD - I.D. 2217 Matlacha

EMBOSSSED SEAL OVER SIGNATURE