

FLORIDA DEPARTMENT OF ENVIRONMENTAL PROTECTION

CERTIFIED CORNER RECORD

085249

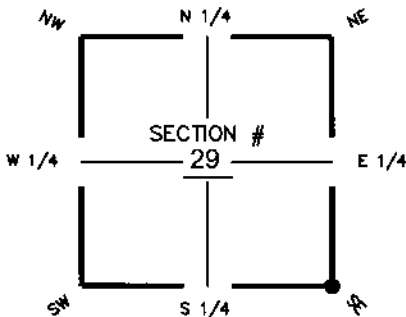
DOC. # _____

CORNER DESCRIPTION:

MONUMENTATION DESCRIPTION (EVIDENCE FOUND OR METHOD TO SET)

Depict corner with

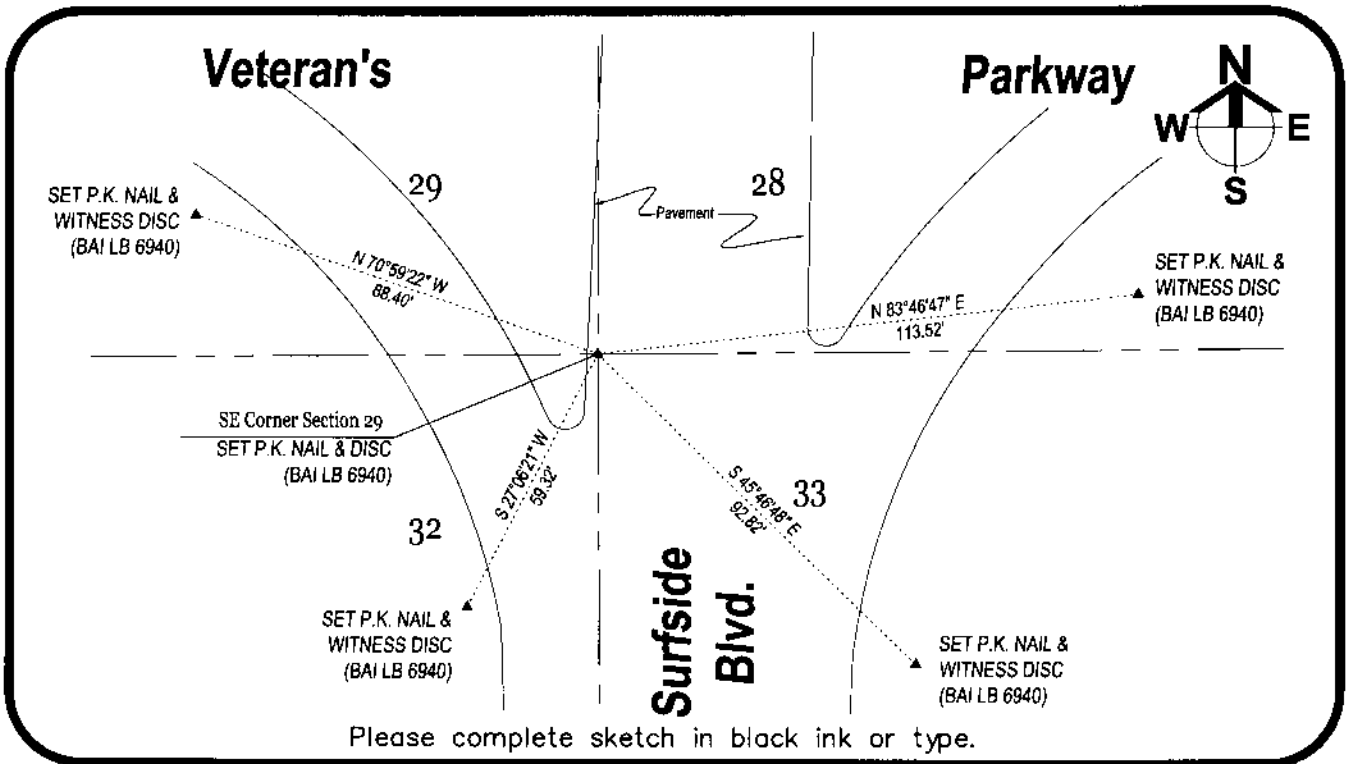
SET P.K. NAIL AND DISC. CORNER WAS RESTABLISHED FROM RECOVERED P.R.M.'S FROM ADJACENT RECORD PLATS "CAPE CORAL UNIT 92" P.B. 25, PG. 26, L.C.R., "CAPE CORAL UNIT 93" P.B. 25, PG. 1, L.C.R. AND "CAPE CORAL UNIT 94" P.B. 25, PG. 37, L.C.R.



SE corner of Section 29
Twp 44S, Rge 23E
Tallahassee Base Meridian,
Lee County(s), Florida

HORIZONTAL POSITION INFORMATION (if determined):

Latitude 26°36'24.96966384"N Longitude 82°01'24.25548192"W
 Y(NORTHING—Ft.) 826294.8202 X(EASTING—Ft.) 648519.4500 Zone WEST
 Convergence -0°00'37.7353" Scale factor 0.99994124
 Coordinate determination (circle one): Field traverse GPS NAD83(1999)
 Horizontal datum (circle one): NAD27 NAD83(1986) NAD83(1990) other (explain) _____
 Accuracy (circle one): 1st 2nd 3rd other _____



SURVEYORS CERTIFICATE:

I certify the monument and accessories indicated above were field located on 07-26-2005

John Robert Barraco
 SIGNATURE _____ 5298
 Barraco & Associates PSM NO. 6940
 FIRM OR AGENCY LB NO. _____
 2271 McGregor Boulevard ADDRESS
 Fort Myers CITY FL 33901
 (239) 461-3170 PHONE NUMBER
 08-02-2005 DATE

SEND ORIGINAL TO:
 Department of Environmental Protection
 Bureau of Surveying and Mapping
 3900 Commonwealth Boulevard
 Mail Station 105
 Tallahassee, Florida 32399

Processed: 8/22/05 D.E.P. USE ONLY sum
 B.L.M. - I.D. 300200
 QUAD - I.D. 217 Pine Island Center

EMBOSSSED SEAL OVER SIGNATURE