

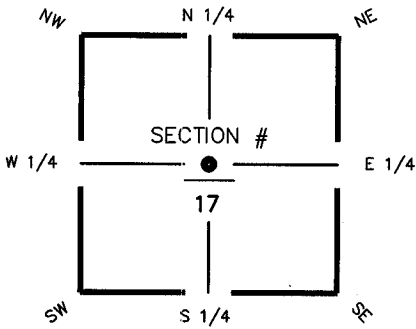
FLORIDA DEPARTMENT OF ENVIRONMENTAL PROTECTION CERTIFIED CORNER RECORD

L-7

DOC. # 080935

CORNER DESCRIPTION: MONUMENTATION DESCRIPTION (EVIDENCE FOUND OR METHOD TO SET)

Depict corner with



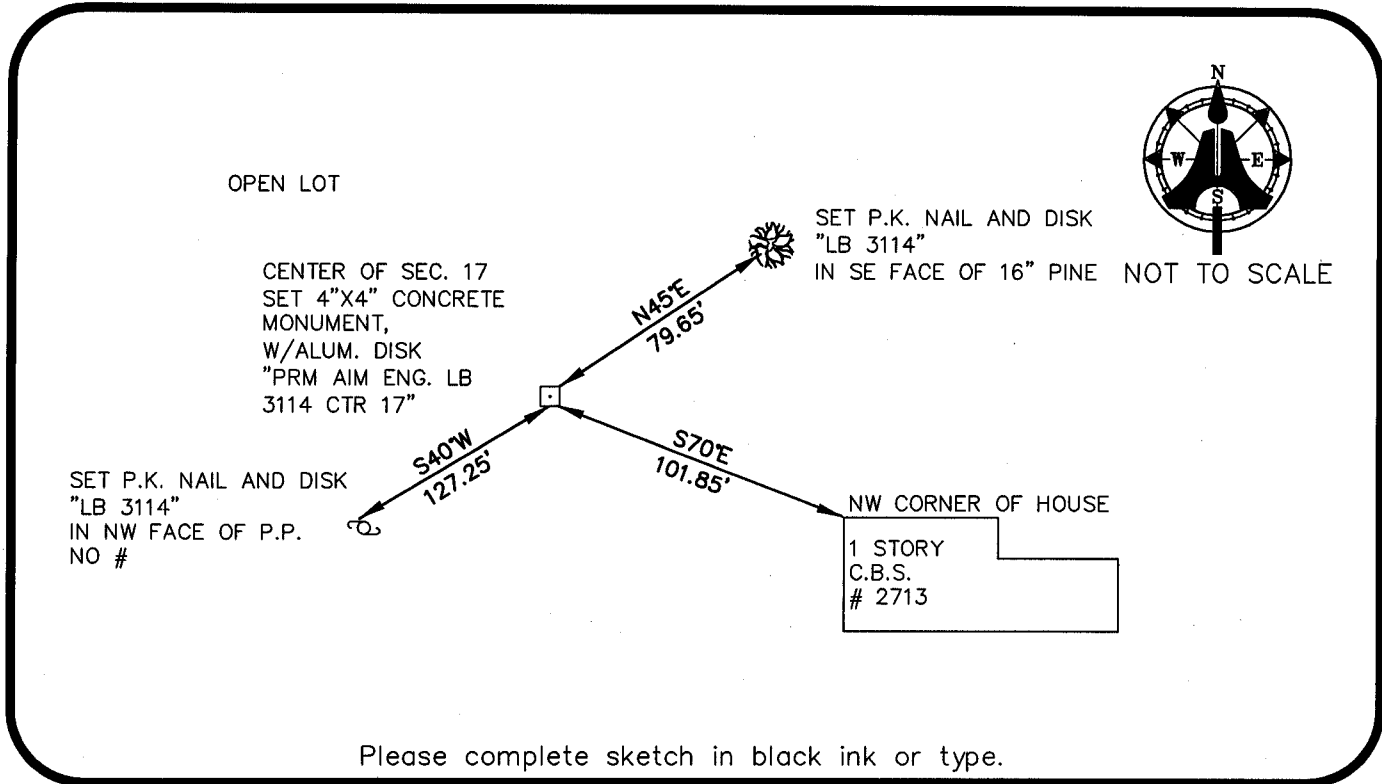
SET 4"X4" CONCRETE MONUMENT,
W/ALUM. DISK
"PRM AIM ENG. LB 3114 CTR 17"

HORIZONTAL POSITION INFORMATION (if determined):

Latitude 26° 38' 41.5025" N Longitude 82° 01' 54.5334" W
Y(NORTHING-Ft.) 840080.95 X(EASTING-Ft.) 645774.78 Zone FL W
Convergence -00° 00' 51.4" Scale factor 0.99994130

Coordinate determination (circle one): Field traverse GPS
Horizontal datum (circle one): NAD27 NAD83(1986) NAD83(1990) other (explain)
Accuracy (circle one): 1st 2nd 3rd other _____

CENTER corner of Section 17
Twp 44 S, Rge 23 E
Tallahassee Base Meridian,
LEE County(s), Florida



SURVEYORS CERTIFICATE:

I certify the monument and accessories indicated above were field located on JULY 09, 2003

[Signature] 5688
SIGNATURE PSM NO.
AM ENGINEERING & SURVEYING, INC. LB 3114
FIRM OR AGENCY LB NO.
5300 LEE BOULEVARD
ADDRESS
LEHIGH ACRES, FLORIDA 33971-1026
CITY STATE ZIP
(239) 332-4569 12/20/2003
PHONE NUMBER DATE

SEND ORIGINAL TO:
Department of Environmental Protection
Bureau of Surveying and Mapping
3900 Commonwealth Boulevard
Mail Station 105
Tallahassee, Florida 32399

D.E.P. USE ONLY

Processed: 12-31-2003 CH

B.L.M. - I.D. 240440

QUAD - I.D. 2217 Matlacha

EMBOSSSED SEAL OVER SIGNATURE