

FLORIDA DEPARTMENT OF ENVIRONMENTAL PROTECTION CERTIFIED CORNER RECORD

085250

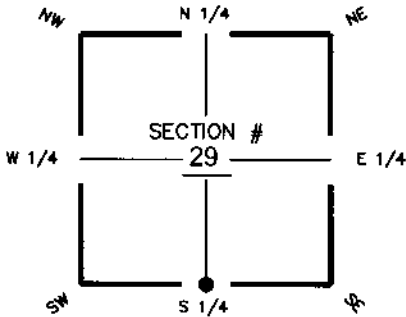
DOC. # _____

CORNER DESCRIPTION:

MONUMENTATION DESCRIPTION (EVIDENCE FOUND OR METHOD TO SET)

Depict corner with

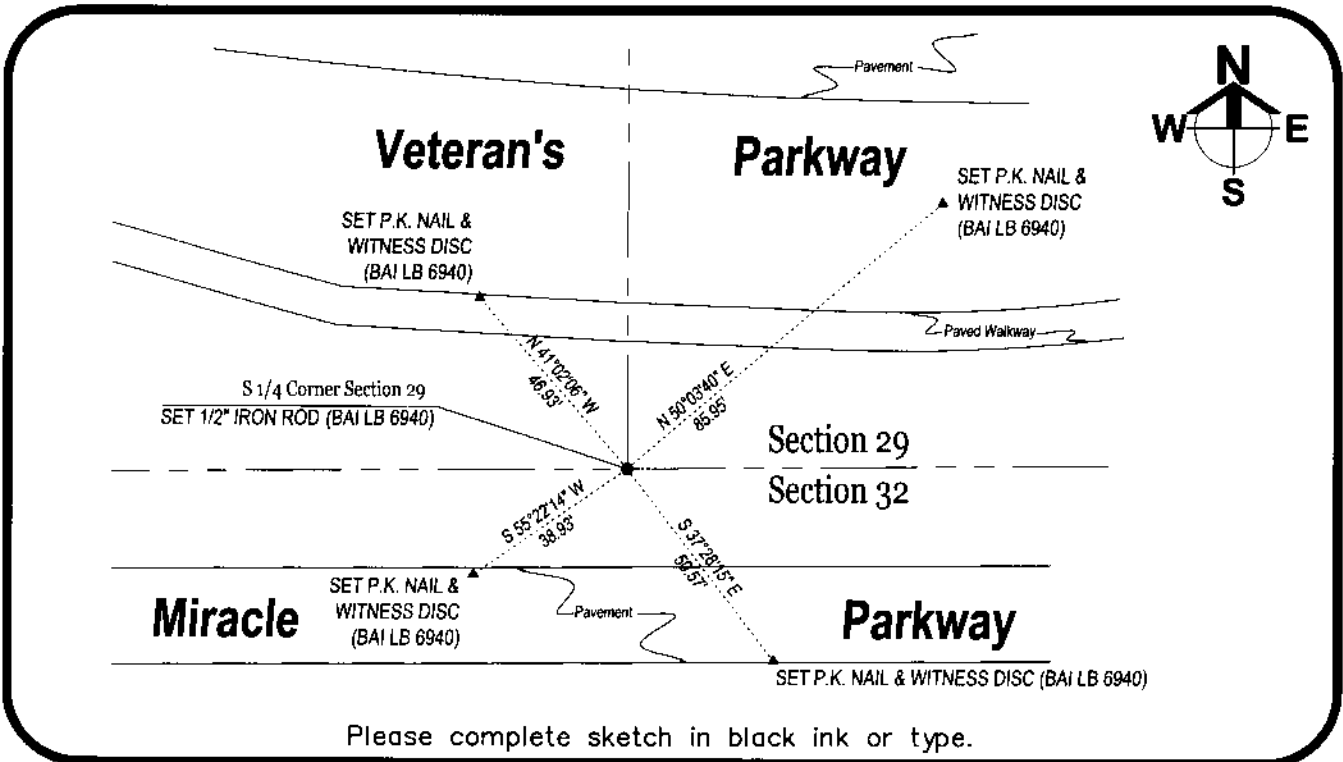
SET 1/2" I.R. WITH CAP, CORNER WAS RESTABLISHED FROM RECOVERED P.R.M.'S FROM ADJACENT RECORD PLATS "CAPE CORAL UNIT 92" P.B. 25, PG. 26, L.C.R., "CAPE CORAL UNIT 93" P.B. 25, PG. 1, L.C.R. AND "CAPE CORAL UNIT 94" P.B. 25, PG. 37, L.C.R.



S 1/4 corner of Section 29
Twp 44S, Rge 23E
Tallahassee Base Meridian,
Lee County(s), Florida

HORIZONTAL POSITION INFORMATION (if determined):

Latitude 26°36'24.77518585"N Longitude 82°01'53.65239102"W
 Y(NORTHING-Ft.) 826275.7574 X(EASTING-Ft.) 645851.3156 Zone WEST
 Convergence -0°00'50.9011" Scale factor 0.99994130
 Coordinate determination (circle one): Field traverse GPS NAD83(1999)
 Horizontal datum (circle one): NAD27 NAD83(1986) NAD83(1990) other (explain) _____
 Accuracy (circle one): 1st 2nd 3rd other _____



Please complete sketch in black ink or type.

SURVEYORS CERTIFICATE:

I certify the monument and accessories indicated above were field located on 07-26-2005

John Robert Barraco
 SIGNATURE
 Barraco & Associates
 FIRM OR AGENCY
 2271 McGregor Boulevard
 ADDRESS
 Fort Myers
 CITY
 (239) 461-3170
 PHONE NUMBER
 5298
 PSM NO.
 6940
 LB NO.
 FL. 33901
 STATE
 08-02-2005
 DATE
 33901
 ZIP

SEND ORIGINAL TO:
 Department of Environmental Protection
 Bureau of Surveying and Mapping
 3900 Commonwealth Boulevard
 Mail Station 105
 Tallahassee, Florida 32399

D.E.P. USE ONLY

Processed: 8/22/05 SJM
 B.L.M. - I.D. 240200
 QUAD - I.D. 2117 Pine Island Center

EMBOSSSED SEAL OVER SIGNATURE