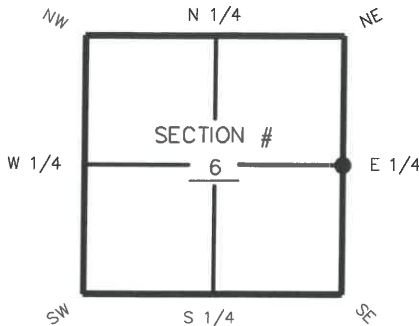


FLORIDA DEPARTMENT OF ENVIRONMENTAL PROTECTION CERTIFIED CORNER RECORD

DOC. # _____

CORNER DESCRIPTION: MONUMENTATION DESCRIPTION (EVIDENCE FOUND OR METHOD TO SET)

Depict corner with

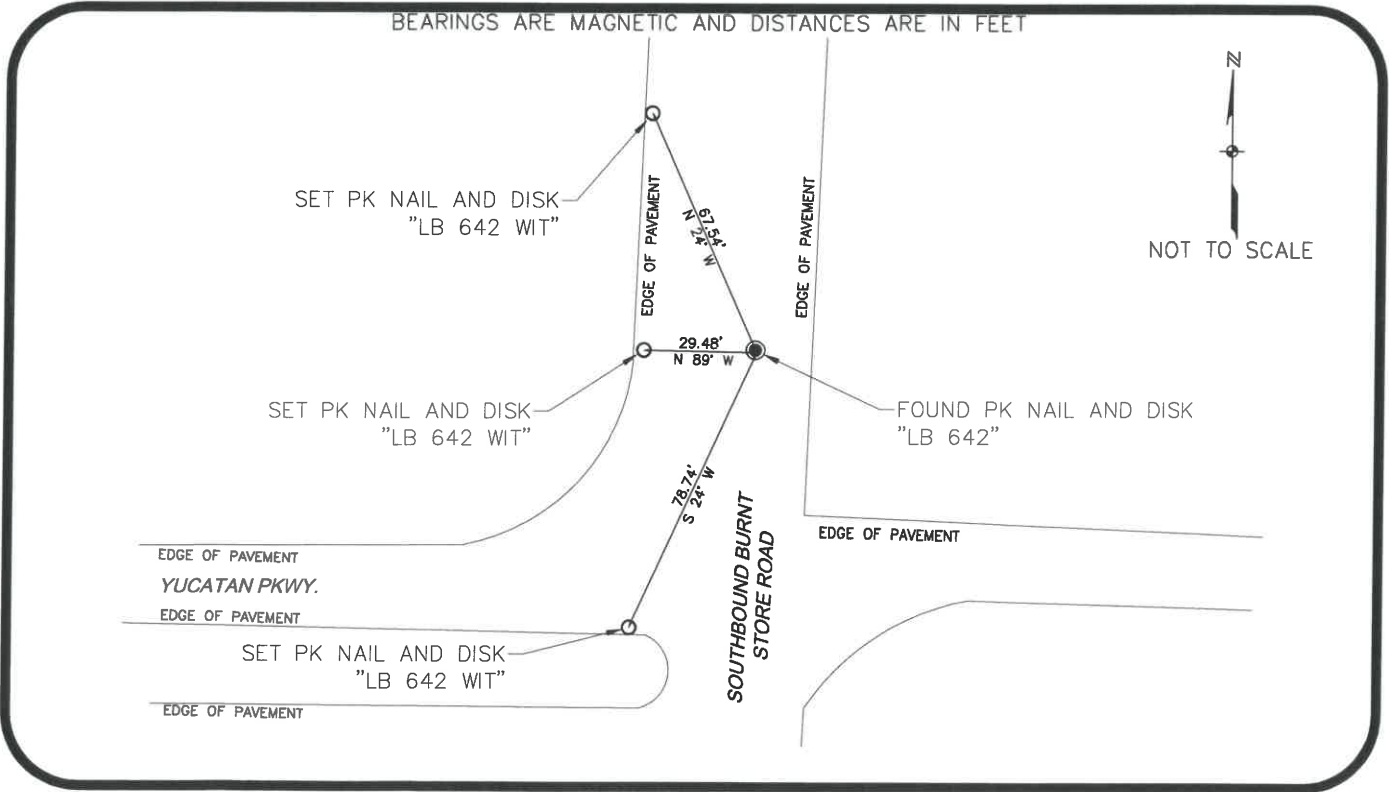


FOUND P.K. NAIL AND DISK IN
CENTERLINE OF PAVEMENT "LB 642"

HORIZONTAL POSITION INFORMATION (if determined):

Latitude N26° 40' 28.7506" Longitude W82° 02' 22.7580"
 Y(NORTHING-Ft.) 850910.427 X(EASTING-Ft.) 643217.270 Zone West
 Convergence -0° 01' 04.0875" Scale factor 0.99994137
 Coordinate determination (circle one): Field traverse GPS
 Horizontal datum (circle one): NAD27 NAD83(1986) NAD83(2011) other (explain):
 Accuracy (circle one): 1st 2nd 3rd other _____

W 1/4 corner of Section 6
 Twp 44 S. , Rge 23 E
 Tallahassee Base Meridian,
LEE CO. FLORIDA



SURVEYORS CERTIFICATE:

I certify the monument and accessories indicated above were field located on 4/13/18

Mark G. Wentzel
 SIGNATURE
 Johnson Engineering, Inc.
 FIRM OR AGENCY
 2122 Johnson Street
 Fort Myers Florida 33901
 CITY STATE ZIP
 239-334-0046
 PHONE NUMBER
 DATE 5/20/18
 EMBOSSSED SEAL OVER SIGNATURE

SEND ORIGINAL TO:
 Department of Environmental Protection
 Bureau of Surveying and Mapping
 3900 Commonwealth Boulevard
 Mail Station 105
 Tallahassee, Florida 32399

D.E.P. USE ONLY	
Processed:	_____
B.L.M. - I.D.	_____
QUAD - I.D.	_____