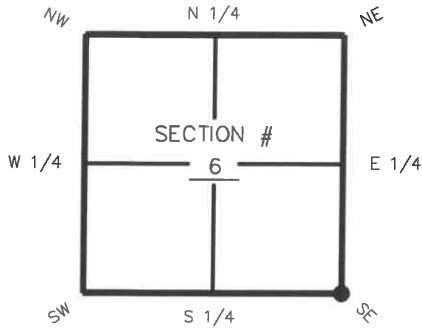


# FLORIDA DEPARTMENT OF ENVIRONMENTAL PROTECTION CERTIFIED CORNER RECORD

DOC. # \_\_\_\_\_

CORNER DESCRIPTION: MONUMENTATION DESCRIPTION (EVIDENCE FOUND OR METHOD TO SET)

Depict corner with



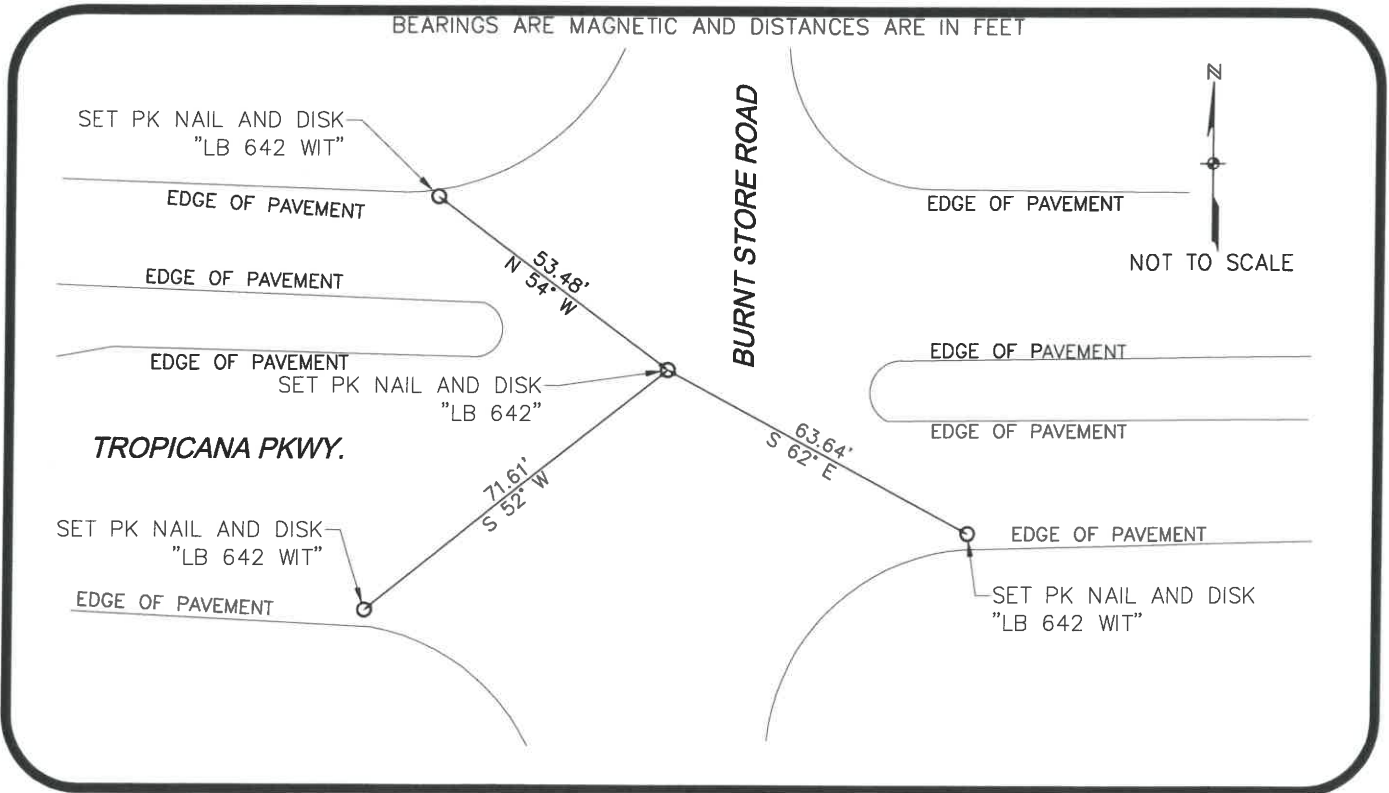
SET P.K. NAIL AND DISK IN  
CENTERLINE OF PAVEMENT "LB 642"

HORIZONTAL POSITION INFORMATION ( if determined ):

Latitude N26° 40' 01.2659" Longitude W82° 02' 23.9450"  
 Y(NORTHING-Ft.) 848135.347 X(EASTING-Ft.) 643108.730 Zone West  
 Convergence -0° 01' 04.6032" Scale factor 0.99994137

Coordinate determination (circle one): Field traverse  GPS  
 Horizontal datum (circle one): NAD27 NAD83(1986)  NAD83(2011) other (explain)  
 Accuracy (circle one): 1st 2nd  3rd other \_\_\_\_\_

SE corner of Section 6  
Twp 44 S. , Rge 23 E  
Tallahassee Base Meridian,  
LEE CO. FLORIDA



SURVEYORS CERTIFICATE:

I certify the monument and accessories indicated above were field located on 4/13/18

*Mark Schwentzel*  
 SIGNATURE  
 Johnson Engineering, Inc.  
 FIRM OR AGENCY  
 2122 Johnson Street  
 Fort Myers Florida 33901  
 CITY STATE ZIP  
 239-334-0046  
 PHONE NUMBER DATE  
 5/20/18  
 EMBOSSED SEAL OVER SIGNATURE

SEND ORIGINAL TO:  
 Department of Environmental Protection  
 Bureau of Surveying and Mapping  
 3900 Commonwealth Boulevard  
 Mail Station 105  
 Tallahassee, Florida 32399

D.E.P. USE ONLY	
Processed:	_____
B.L.M. - I.D.	_____
QUAD - I.D.	_____