

FLORIDA DEPARTMENT OF ENVIRONMENTAL PROTECTION

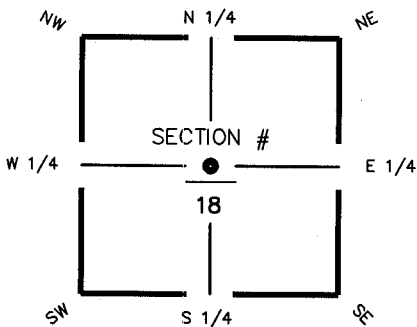
CERTIFIED CORNER RECORD

L-3

DOC. # 080941

CORNER DESCRIPTION: MONUMENTATION DESCRIPTION (EVIDENCE FOUND OR METHOD TO SET)

Depict corner with

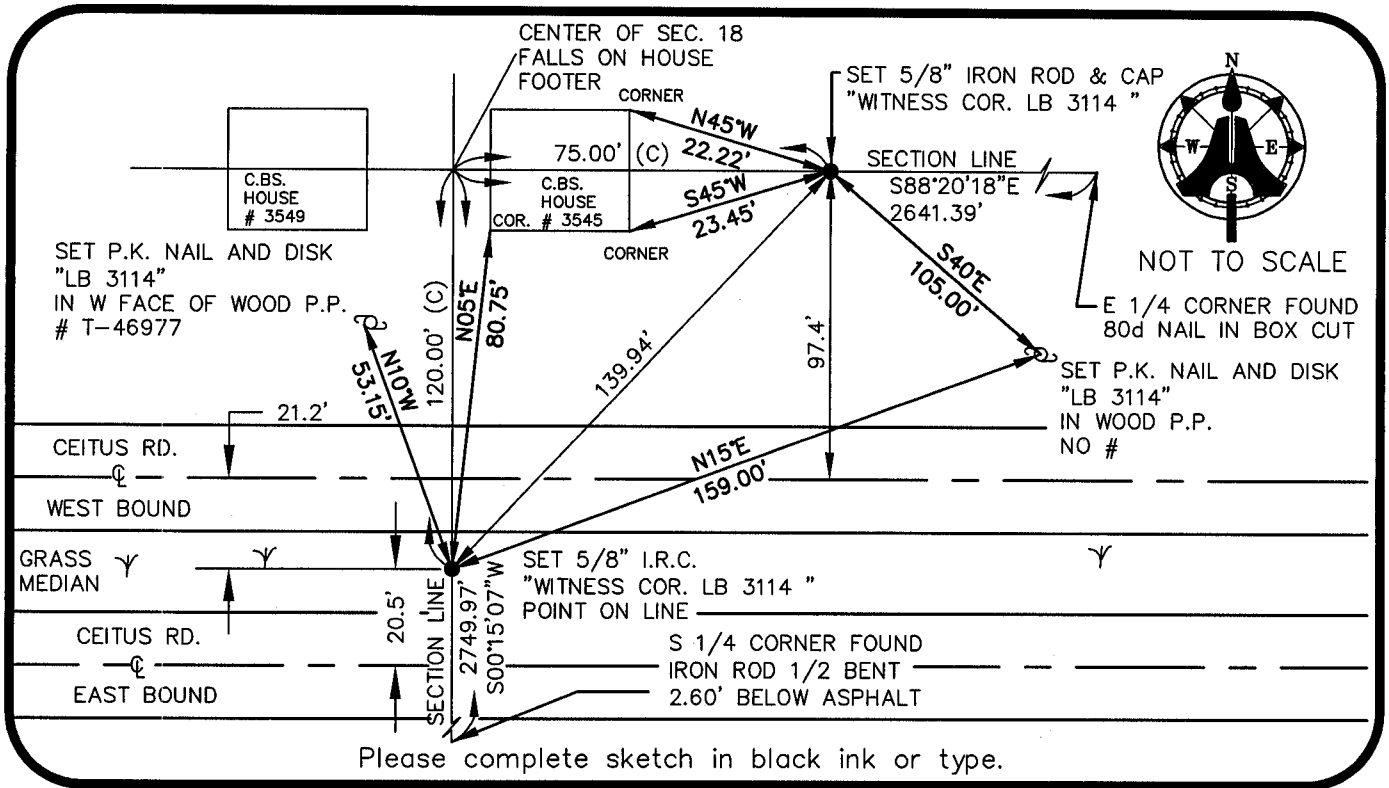


CORNER FALLS ON "HOUSE FOOTER", COULD NOT SET
 SET (2) WITNESS CORNERS W/ 5/8" IRON ROD & CAP
 "WITNESS COR. LB 3114"

HORIZONTAL POSITION INFORMATION (if determined):

Latitude 26° 38' 42.3894" N Longitude 82° 02' 53.3128" W
 Y(NORTHING-Ft.) 840172.18 X(EASTING-Ft.) 640441.63 Zone FL W
 Convergence -00° 01' 17.7" Scale factor 0.99994146
 Coordinate determination (circle one): Field traverse GPS
 Horizontal datum (circle one): NAD27 NAD83(1986) NAD83(1990) other (explain)
 Accuracy (circle one): 1st 2nd 3rd other

CENTER corner of Section 18
 Twp 44 S, Rge 23 E,
 Tallahassee Base Meridian,
LEE County(s), Florida



SURVEYORS CERTIFICATE:

I certify the monument and accessories indicated above were field located on JULY 08, 2003

SIGNATURE _____ 5688 PSM NO.
AIM ENGINEERING & SURVEYING, INC. LB 3114
 FIRM OR AGENCY _____ LB NO.
5300 LEE BOULEVARD ADDRESS
LEHIGH ACRES, FLORIDA 33971-1026
 CITY STATE ZIP
(239) 332-4569 12/20/2003
 PHONE NUMBER DATE

SEND ORIGINAL TO:
 Department of Environmental Protection
 Bureau of Surveying and Mapping
 3900 Commonwealth Boulevard
 Mail Station 105
 Tallahassee, Florida 32399

	D.E.P. USE ONLY
Processed: <u>12-31-2003 CH</u>	
B.L.M. - I.D. <u>140440</u>	
QUAD - I.D. <u>2217 Matlacha</u>	

EMBOSSSED SEAL OVER SIGNATURE