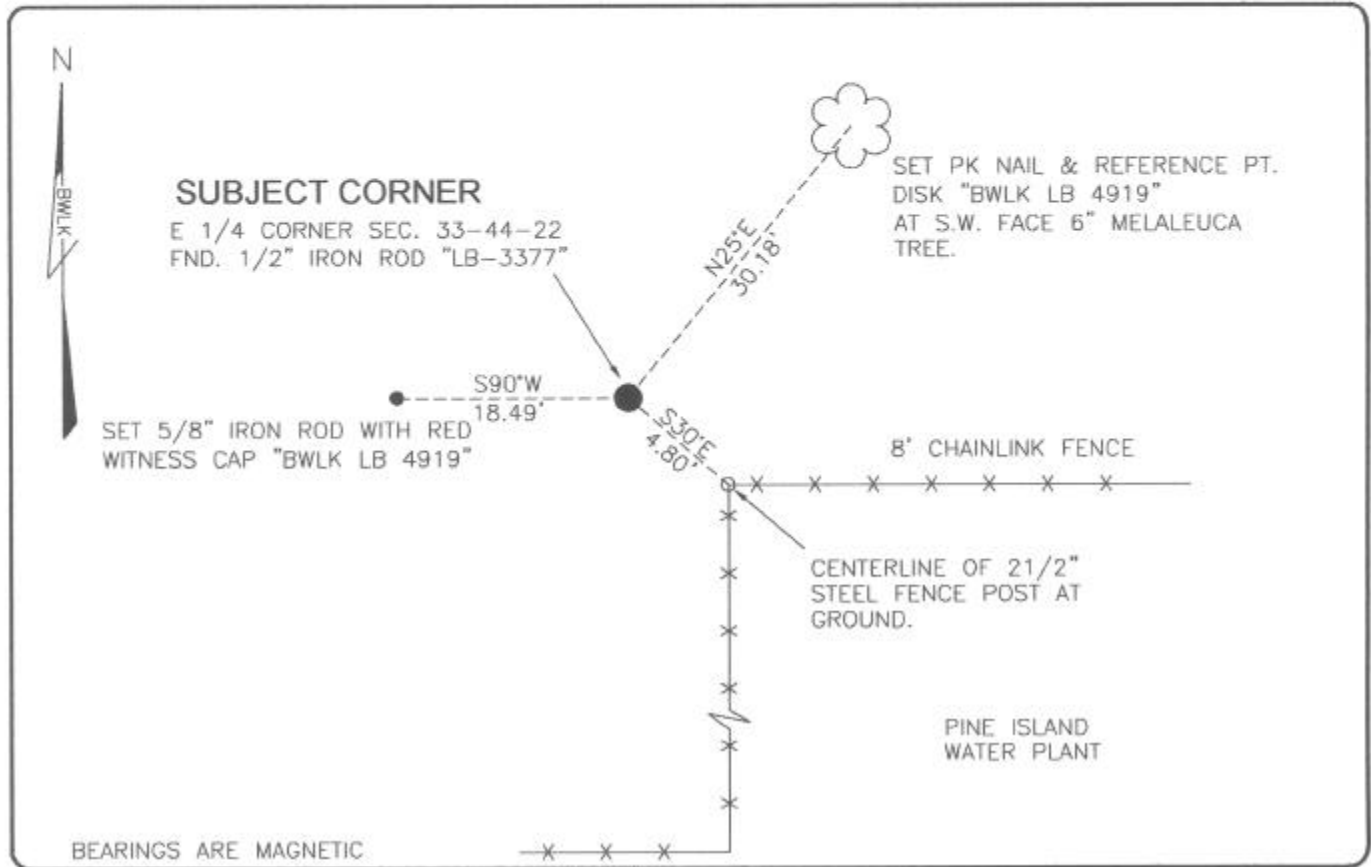


LAND CORNER RECORD

**PUBLIC WORKS
LEE COUNTY, FLORIDA**

Address - 1500 Monroe St., Ft. Myers, Fla. 33901

Phone : (239) 479-8900



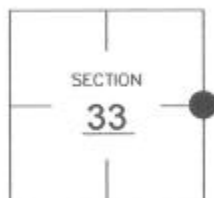
BEARINGS ARE MAGNETIC

COMMENTS:

FOUND 1/2" IRON ROD (LB-3377) AT SPLIT OF EAST LINE OF SECTION 33. THERE WAS NO ORIGINAL CORNER SET ACCORDING TO GOVERNMENT NOTES.

CORNER DESCRIPTION

E1/4 Corner
Section 33
Township 44
Range 22



HORIZONTAL POSITION INFORMATION

Florida West Zone, NAD 1983(1990 Adjustment)

Northing(ft) 823501.55 Easting(ft) 620560.44

Latitude 26°35'57.1616" Longitude 82°06'32.2757"

Scale Factor 0.99994

EXISTING CERTIFIED CORNER RECORDS

Document No. NONE Date NONE

The above documents are based on FDEP Bureau of Surveying and Mapping Record Information.

I hereby certify the monument and accessories shown above were field located on 8-11-04

Scott C. Whitaker
SCOTT C. WHITAKER
Professional Surveyor and Mapper
Florida Certificate No. 4324
Date Signed 9-03-04

BEAN, WHITAKER, LUTZ & KASER, INC. (LB 4919)
13041 McGregor Boulevard
Fort Myers, Florida 33919-5910
Phone: (239) 481-1331

POINT NO. 11041

BLM REFERENCE NO. T44SR22E400140