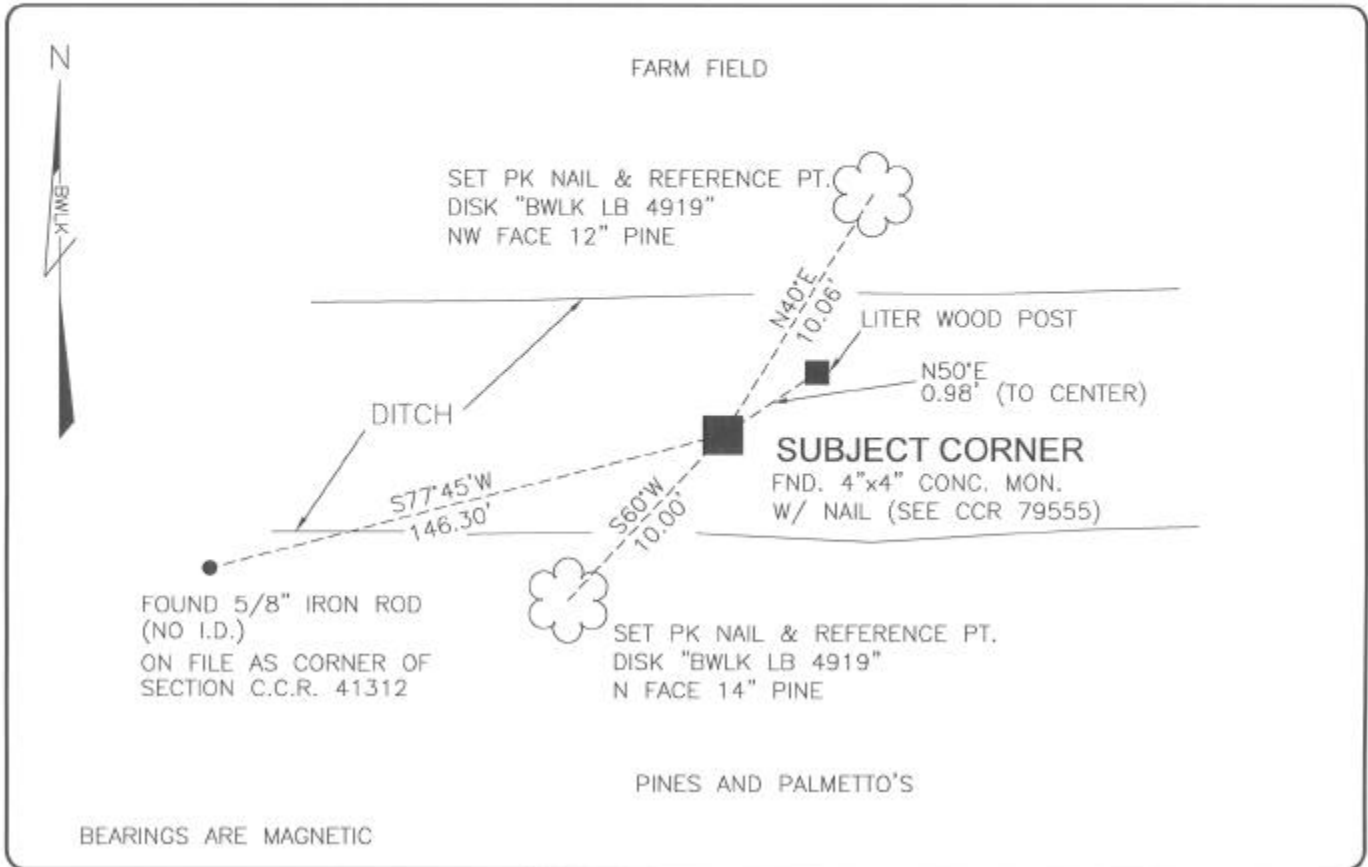


LAND CORNER RECORD

PUBLIC WORKS
LEE COUNTY, FLORIDA

Address - 1500 Monroe St., Ft. Myers, Fla. 33901

Phone : (239) 479-8900



COMMENTS:

THIS IS A DISPUTED CORNER (SEE CCR41312). FOUND 4" X 4" C.M. WITH NAIL ON TOP. CORNER IS WITNESSED BY OLD LITER WOOD POST 0.65'N / 0.73'E OF C.M. OLD SURVEY BY JOHN AMEY (1966) AND LES BULSON (1969) CONFIRM THIS C.M. WAS USED AS SECTION CORNER. THIS WAS PREVIOUSLY AN OLD RUSTED OFF 1" IRON PIPE WHICH HAS SINCE BEEN RESET WITH A CONCRETE MONUMENT. SAME CORNER AS SHOWN IN CCR 79555.

CORNER DESCRIPTION

SE Corner
Section 33
Township 44
Range 22



HORIZONTAL POSITION INFORMATION

Florida West Zone, NAD 1983(1990 Adjustment)
Northing(ft) 820896.73 Easting(ft) 620639.52
Latitude 26°35'31.3639" Longitude 82°06'31.3801"
Scale Factor 0.99994

EXISTING CERTIFIED CORNER RECORDS

Document No.	Date
<u>41312</u>	<u>12-12-91</u>
<u>79555</u>	<u>8-18-03</u>

The above documents are based on FDEP Bureau of Surveying and Mapping Record Information.

I hereby certify the monument and accessories shown above were field located on 8-11-04

Scott C. Whitaker
SCOTT C. WHITAKER
Professional Surveyor and Mapper
Florida Certificate No. 4324
Date Signed 9-03-04

BEAN, WHITAKER, LUTZ & KAREH, INC. (LB 4919)
13041 McGregor Boulevard
Fort Myers, Florida 33919-5910
Phone: (239) 481-1331

POINT NO. 11042

BLM REFERENCE NO. T44SR22E400100