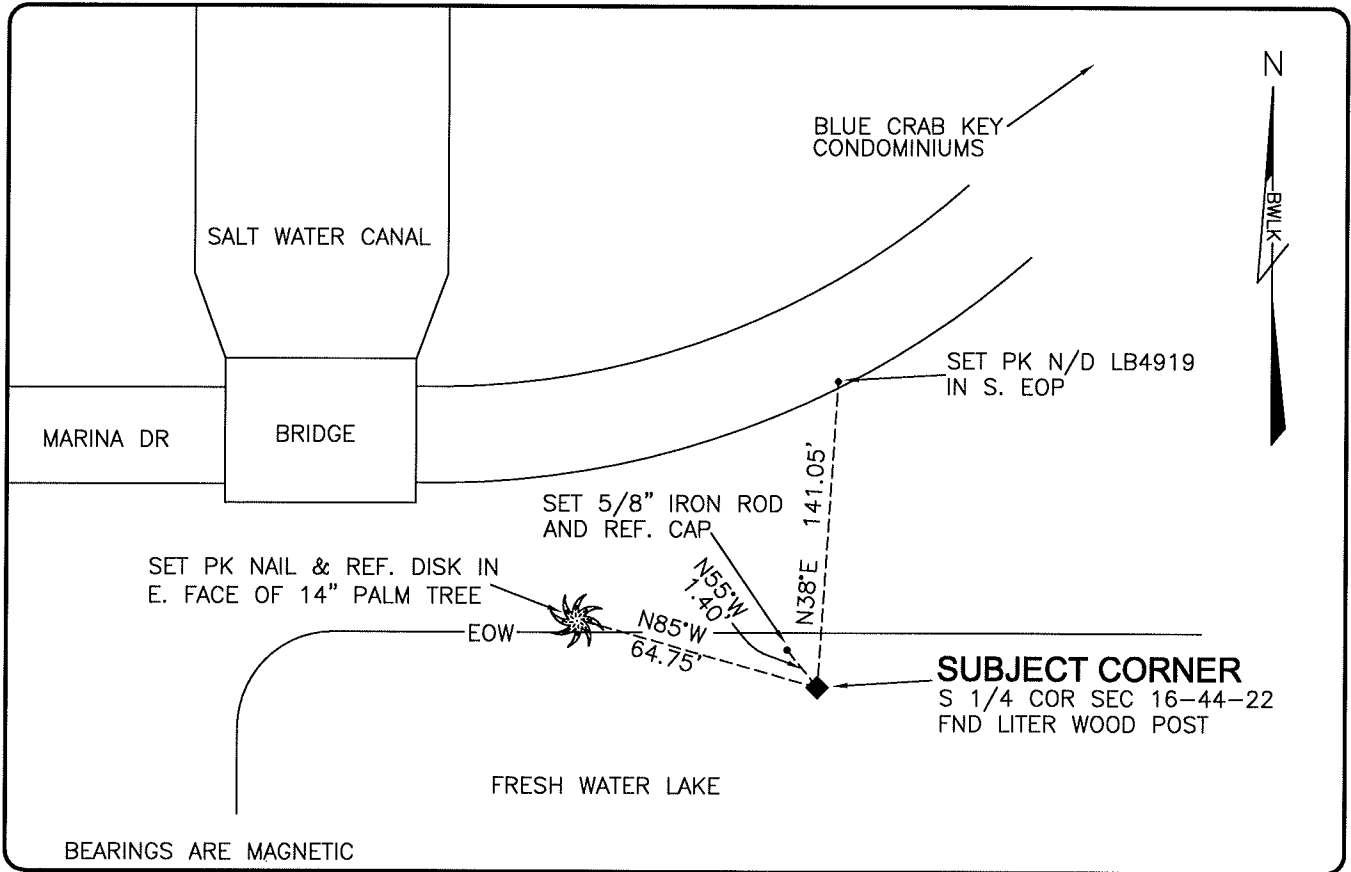


**LAND CORNER RECORD**

**PUBLIC WORKS  
LEE COUNTY, FLORIDA**

Address - 1500 Monroe St., Ft. Myers, Fla. 33901

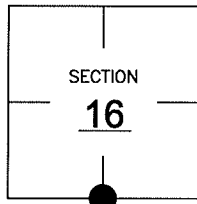
Phone : (239) 479-8900



**COMMENTS:** CORNER RECOVERED AS SHOWN ON CCR 23252

**CORNER DESCRIPTION**

S 1/4 Corner  
 Section 16  
 Township 44  
 Range 22



**HORIZONTAL POSITION INFORMATION**

Florida West Zone, NAD 1983(1990 Adjustment)  
 Northing(ft) 836861.90 Easting(ft) 617998.74  
 Latitude 26°38'09.4608" Longitude 82°07'00.6325"  
 Scale Factor 0.99994

**EXISTING CERTIFIED CORNER RECORDS**

Document No.	Date
<u>23252</u>	<u>6-12-86</u>
<u>17883</u>	<u>2-14-83</u>

The above documents are based on FDEP Bureau of Surveying and Mapping Record Information.

I hereby certify the monument and accessories shown above were field located on 4-28-07.

*Scott C. Whitaker*  
**SCOTT C. WHITAKER**  
 Professional Surveyor and Mapper  
 Florida Certificate No. 4324  
 Date Signed 5/14/07

BEAN, WHITAKER, LUTZ & KAREH, INC. (LB 4919)  
 13041 McGregor Boulevard  
 Fort Myers, Florida 33919-5910  
 Phone: (239) 481-1331

POINT NO. 11630

BLM REFERENCE NO. T44SR22E340400