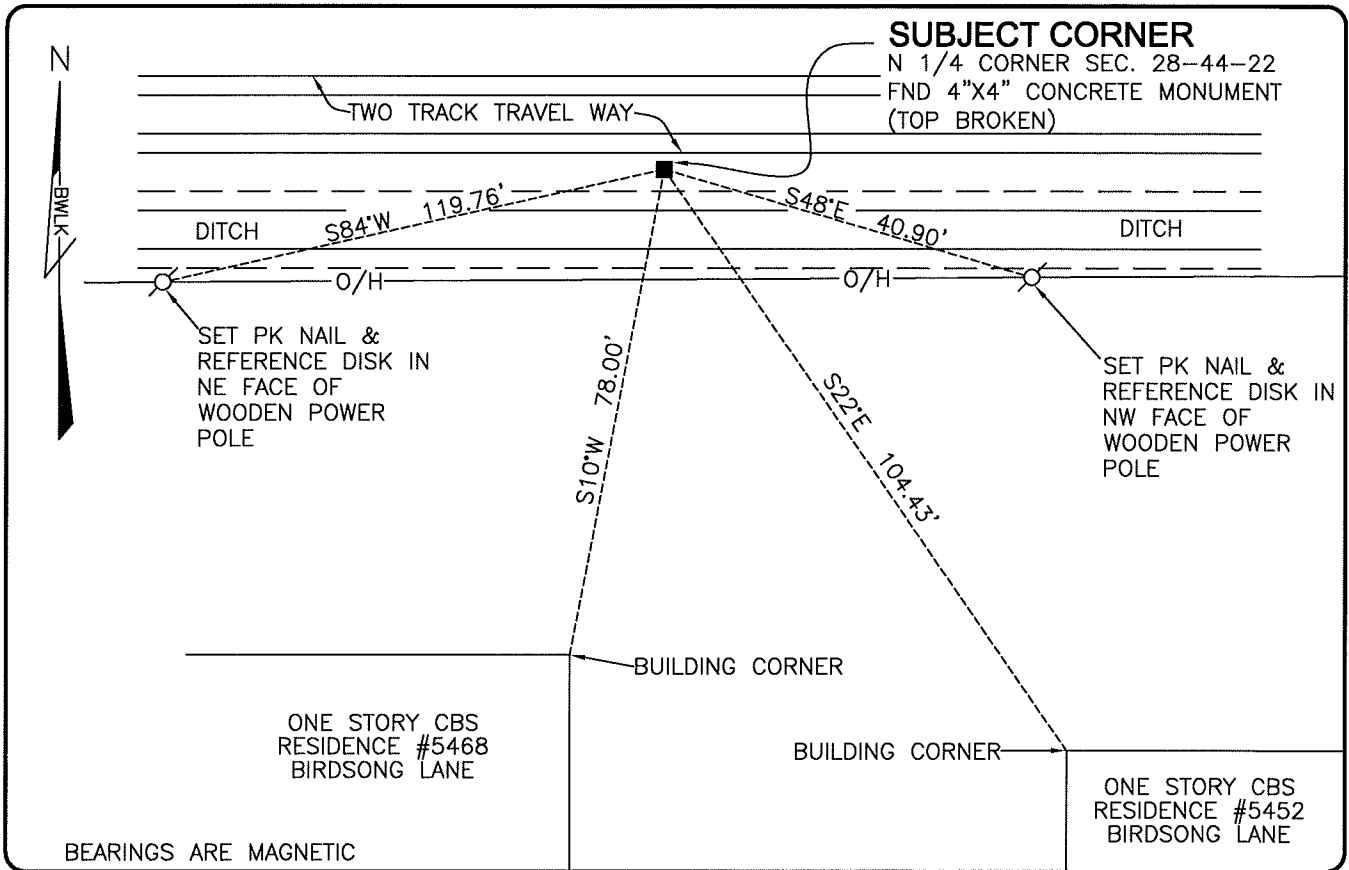


LAND CORNER RECORD

**PUBLIC WORKS
LEE COUNTY, FLORIDA**

Address - 1500 Monroe St., Ft. Myers, Fla. 33901

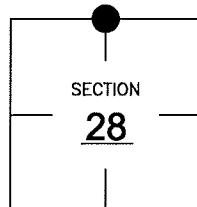
Phone : (239) 479-8900



COMMENTS: CORNER RECOVERED ACCORDING TO CCR 14750 AND IN HARMONY WITH SURVEY BY CARL E. JOHNSON DATED 1949.

CORNER DESCRIPTION

N 1/4 Corner
Section 28
Township 44
Range 22



HORIZONTAL POSITION INFORMATION

Florida West Zone, NAD 1983(1990 Adjustment)

Northing(ft) 831453.07 Easting(ft) 618072.00

Latitude 26°37'15.8922" Longitude 82°06'59.7707"

Scale Factor 0.99994

EXISTING CERTIFIED CORNER RECORDS

Document No.	Date
<u>0014750</u>	<u>1-30-82</u>

The above documents are based on FDEP Bureau of Surveying and Mapping Record Information.

I hereby certify the monument and accessories shown above were field located on 4-5-07.

Scott C. Whitaker
SCOTT C. WHITAKER
Professional Surveyor and Mapper
Florida Certificate No. 4324
Date Signed 3/14/07

BEAN, WHITAKER, LUTZ & KAREH, INC. (LB 4919)
13041 McGregor Boulevard
Fort Myers, Florida 33919-5910
Phone: (239) 481-1331

POINT NO. 11661

BLM REFERENCE NO. T44SR22E340300