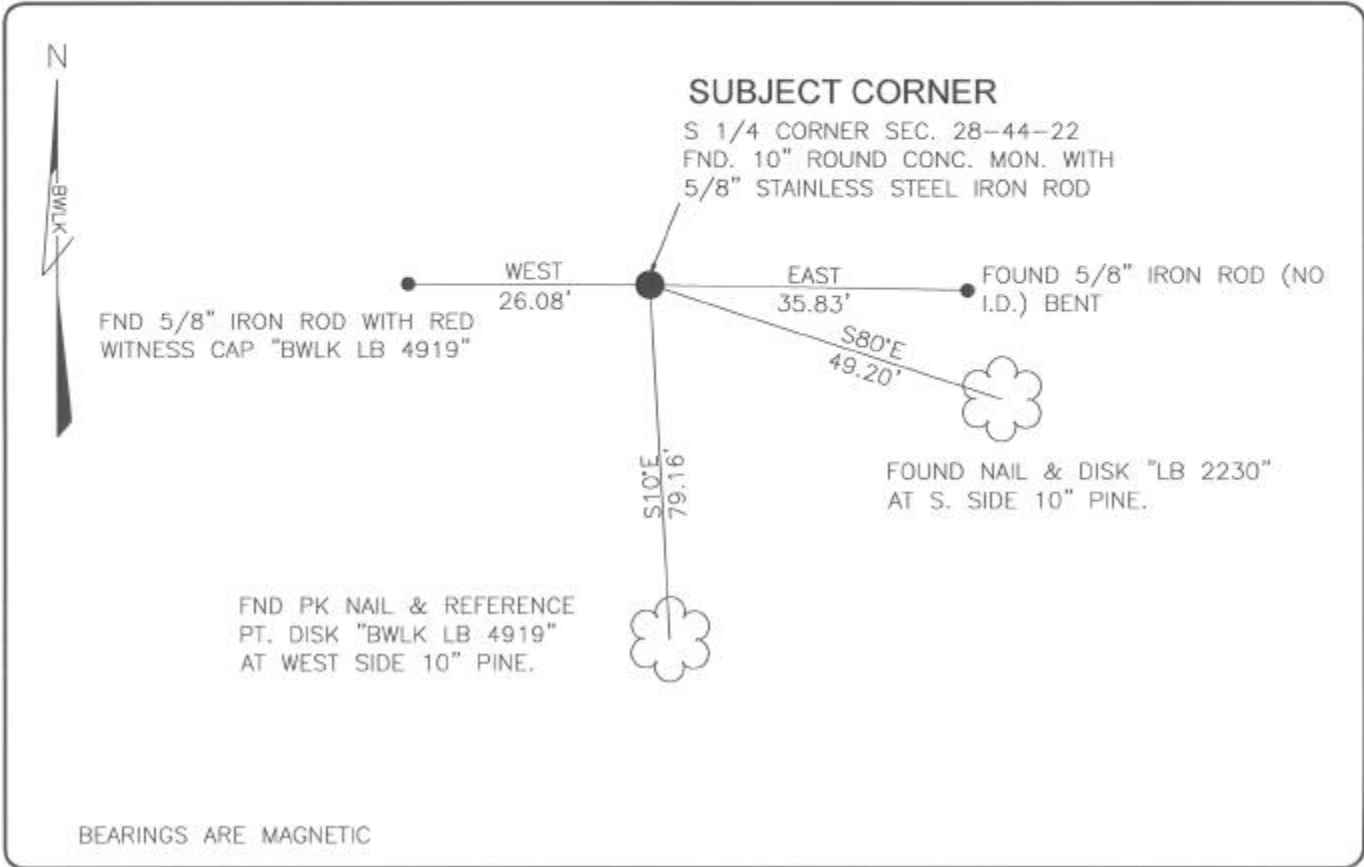


LAND CORNER RECORD

**PUBLIC WORKS
LEE COUNTY, FLORIDA**

Address - 1500 Monroe St., Ft. Myers, Fla. 33901

Phone : (239) 479-8900



COMMENTS:

FOUND 10" ROUND CONCRETE MONUMENT WITH 5/8" STAINLESS STEEL ROD AS SHOWN IN CCR 73294.

CORNER DESCRIPTION

S1/4 Corner
Section 28
Township 44
Range 22



HORIZONTAL POSITION INFORMATION

Florida West Zone, NAD 1983(1990 Adjustment)
 Northing(ft) 826061.08 Easting(ft) 617940.42
 Latitude 26°36'22.4884" Longitude 82°07'01.1665"
 Scale Factor 0.99994

EXISTING CERTIFIED CORNER RECORDS

Document No.	Date
<u>38713</u>	<u>4-23-91</u>
<u>41313</u>	<u>12-12-91</u>
<u>73294</u>	<u>9-13-01</u>

The above documents are based on FDEP Bureau of Surveying and Mapping Record Information.

I hereby certify the monument and accessories shown above were field-located on 8-11-04.

Scott C. Whitaker
SCOTT C. WHITAKER
 Professional Surveyor and Mapper
 Florida Certificate No. 4324
 Date Signed 9-03-04

BEAN, WHITAKER, LUTZ & KAREH, INC. (LB 4919)
 13041 McGregor Boulevard
 Fort Myers, Florida 33919-5910
 Phone: (239) 481-1331

POINT NO. 11047

BLM REFERENCE NO. T44SR22E340200