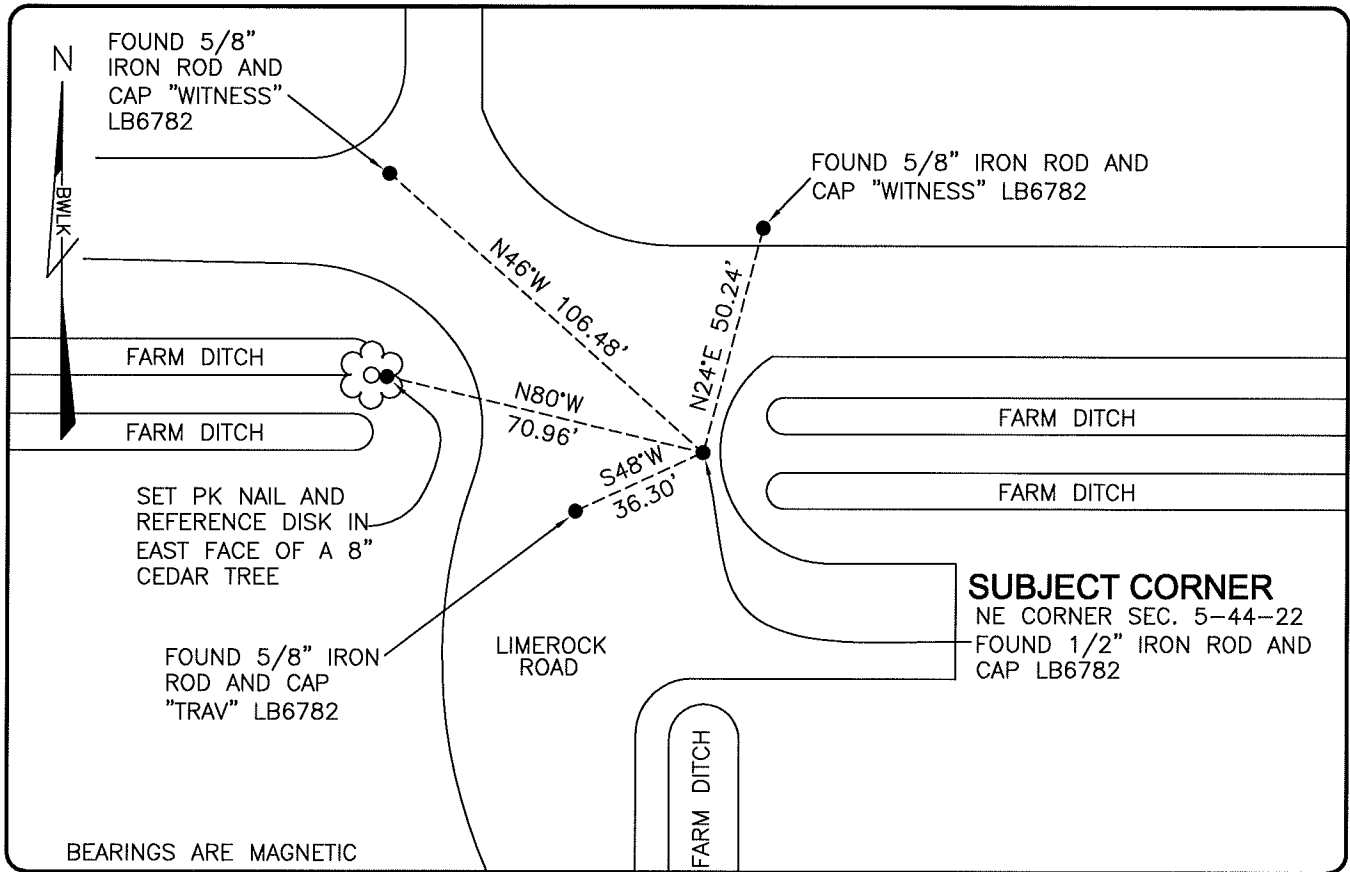


**LAND CORNER RECORD**

**PUBLIC WORKS  
LEE COUNTY, FLORIDA**

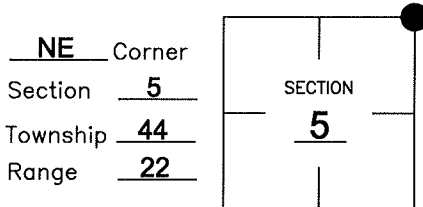
Address - 1500 Monroe St., Ft. Myers, Fla. 33901

Phone : (239) 479-8900



**COMMENTS:** CORNER RECOVERED AS SHOWN ON CCR 82868

**CORNER DESCRIPTION**



**HORIZONTAL POSITION INFORMATION**

Florida West Zone, NAD 1983(1990 Adjustment)  
 Northing(ft) 852599.573 Easting(ft) 615430.225  
 Latitude 26°40'45.3026" Longitude 82°07'29.1084"  
 Scale Factor 0.99994

**EXISTING CERTIFIED CORNER RECORDS**

Document No.	Date
<u>82868</u>	<u>10-04-04</u>

The above documents are based on FDEP Bureau of Surveying and Mapping Record Information.

I hereby certify the monument and accessories shown above were field located on 4-05-07.

*Scott C. Whitaker*  
**SCOTT C. WHITAKER**  
 Professional Surveyor and Mapper  
 Florida Certificate No. 4324  
 Date Signed 5/14/07

BEAN, WHITAKER, LUTZ & KAREH, INC. (LB 4919)  
 13041 McGregor Boulevard  
 Fort Myers, Florida 33919-5910  
 Phone: (239) 481-1331

POINT NO. 11621

BLM REFERENCE NO. T44SR22E300700