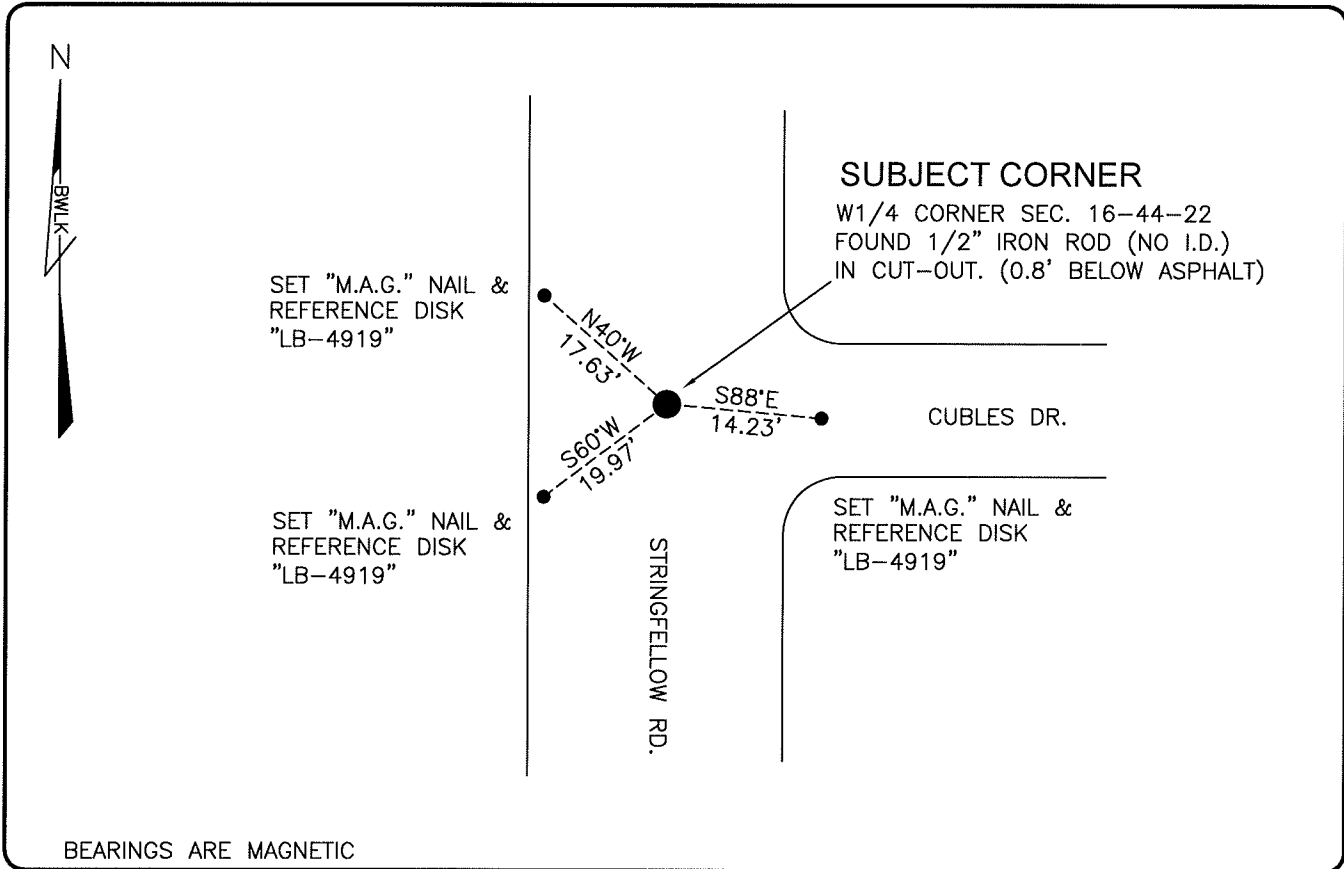


LAND CORNER RECORD

PUBLIC WORKS  
LEE COUNTY, FLORIDA

Address - 1500 Monroe St., Ft. Myers, Fla. 33901

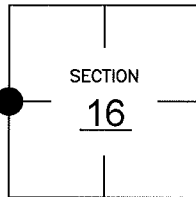
Phone : (239) 479-8900



COMMENTS: CORNER RECOVERED AS SHOWN ON CCR 17881 AND 41305. ALSO IN HARMONY WITH SRD TIE PER R/W MAPS DATED 1940

CORNER DESCRIPTION

W1/4 Corner  
Section 16  
Township 44  
Range 22



HORIZONTAL POSITION INFORMATION

Florida West Zone, NAD 1983(1990 Adjustment)  
 Northing(ft) 839516.09 Easting(ft) 615293.32  
 Latitude 26°38'35.7227" Longitude 82°07'30.4764"  
 Scale Factor 0.99994

EXISTING CERTIFIED CORNER RECORDS

Document No.	Date
<u>17881</u>	<u>7-11-83</u>
<u>41305</u>	<u>12-12-91</u>

The above documents are based on FDEP Bureau of Surveying and Mapping Record Information.

I hereby certify the monument and accessories shown above were field located on 9-21-04.

*Scott C. Whitaker*  
 SCOTT C. WHITAKER  
 Professional Surveyor and Mapper  
 Florida Certificate No. 4324  
 Date Signed 5/14/07

BEAN, WHITAKER, LUTZ & KAREH, INC. (LB 4919)  
 13041 McGregor Boulevard  
 Fort Myers, Florida 33919-5910  
 Phone: (239) 481-1331

POINT NO. 11065

BLM REFERENCE NO. T44SR22E300440