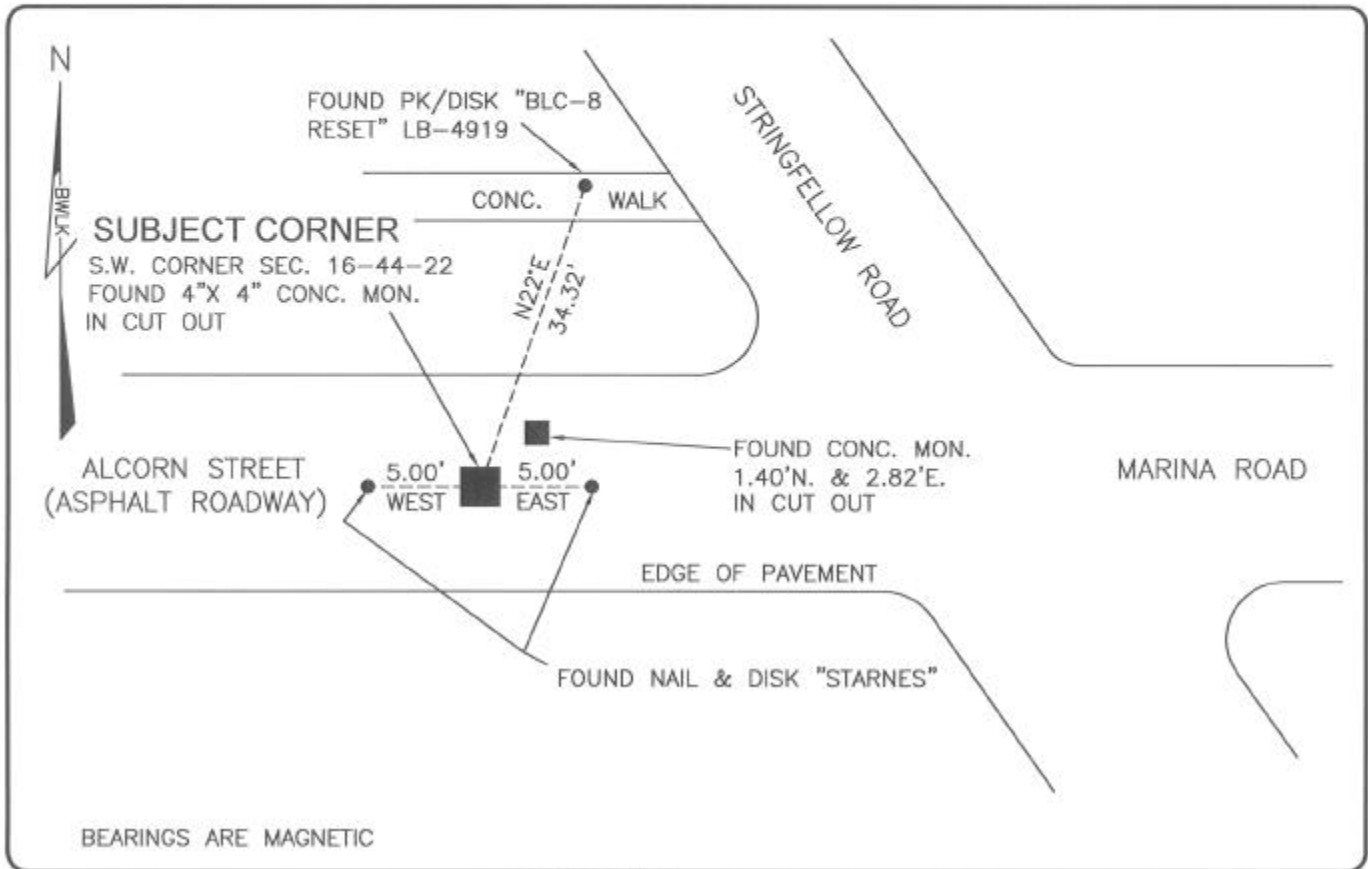


LAND CORNER RECORD

PUBLIC WORKS  
LEE COUNTY, FLORIDA

Address - 1500 Monroe St., Ft. Myers, Fla. 33901

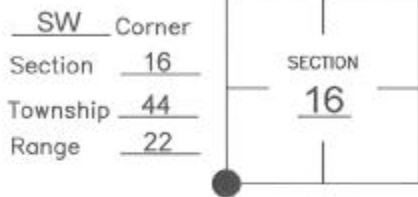
Phone : (239) 479-8900



COMMENTS:

THIS IS A DISPUTED CORNER. FOUND 4" X 4" CONCRETE MONUMENT IN ASPHALT CUT OUT. VERIFIED TIES IN CCR 73292. THIS CORNER WAS HELD BY JOHN AMEY IN 1963. THERE ARE CCR'S FILED WHICH REFERENCE THE MONUMENT LYING 1.40'N/2.82'E AS THE SECTION CORNER.

CORNER DESCRIPTION



HORIZONTAL POSITION INFORMATION

Florida West Zone, NAD 1983(1990 Adjustment)  
 Northing(ft) 836822.12 Easting(ft) 615303.88  
 Latitude 26°38'09.0417" Longitude 82°07'30.3310"  
 Scale Factor 0.99994

EXISTING CERTIFIED CORNER RECORDS

Document No.	Date
<u>17882</u>	<u>7-11-83</u>
<u>23253</u>	<u>6-12-86</u>
<u>41306</u>	<u>12-12-91</u>
<u>73292</u>	<u>9-13-01</u>

The above documents are based on FDEP Bureau of Surveying and Mapping Record Information.

I hereby certify the monument and accessories shown above were field located on 8-11-04

*Scott C. Whitaker*  
 SCOTT C. WHITAKER  
 Professional Surveyor and Mapper  
 Florida Certificate No. 4324  
 Date Signed 9-03-04

BEAN, WHITAKER, LUTZ & KAREH, INC. (LB 4919)  
 13041 McGregor Boulevard  
 Fort Myers, Florida 33919-5910  
 Phone: (239) 481-1331

POINT NO. 11059

BLM REFERENCE NO. T44SR22E300400