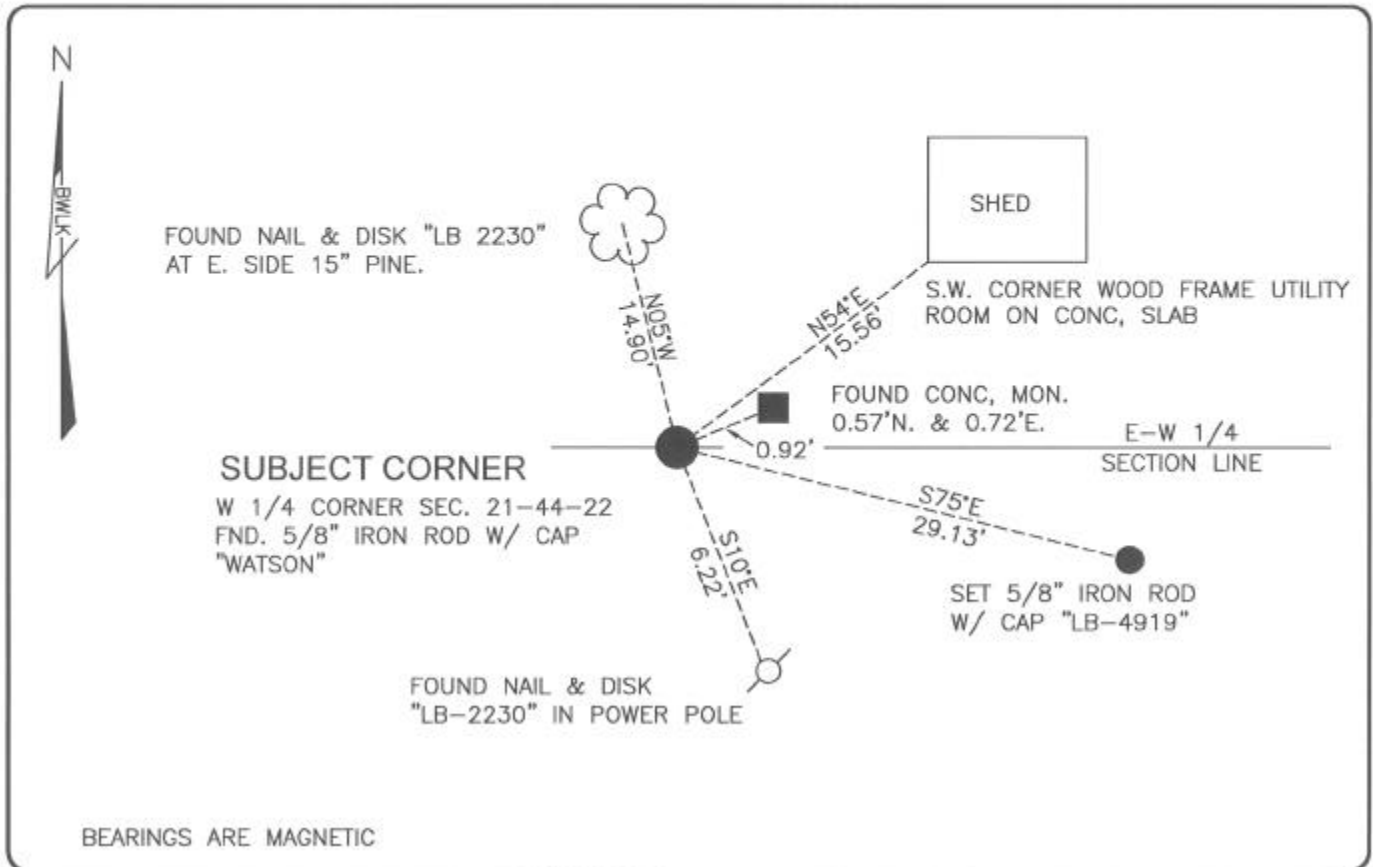


LAND CORNER RECORD

**PUBLIC WORKS
LEE COUNTY, FLORIDA**

Address - 1500 Monroe St., Ft. Myers, Fla. 33901

Phone : (239) 479-8900



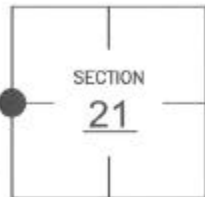
BEARINGS ARE MAGNETIC

COMMENTS:

FOUND 5/8" IRON ROD WITH CAP "WATSON" IN FARM FIELD DITCH. PRIOR REFERENCE TIES IN C.C.R. #41307 APPEAR TO BE IN ERROR. CORNER IS THE SAME AS IN CCR 73293.

CORNER DESCRIPTION

W1/4 Corner
Section 21
Township 44
Range 22



HORIZONTAL POSITION INFORMATION

Florida West Zone, NAD 1983(1990 Adjustment)
 Northing(ft) 834118.93 Easting(ft) 615336.42
 Latitude 26°37'42.2695" Longitude 82°07'29.9432"
 Scale Factor 0.99994

EXISTING CERTIFIED CORNER RECORDS

| Document No. | Date |
|--------------|-----------------|
| <u>41307</u> | <u>12-12-91</u> |
| <u>73293</u> | <u>9-13-01</u> |
| | |
| | |

The above documents are based on FDEP Bureau of Surveying and Mapping Record Information.

I hereby certify the monument and accessories shown above were field located on 9-13-01

Scott C. Whitaker
 SCOTT C. WHITAKER
 Professional Surveyor and Mapper
 Florida Certificate No. 4324
 Date Signed 9-03-04

BEAN, WHITAKER, LUTZ & KAREH, INC. (LB 4919)
 13041 McGregor Boulevard
 Fort Myers, Florida 33919-5910
 Phone: (239) 481-1331

POINT NO. 11058

BLM REFERENCE NO. T44SR22E300340