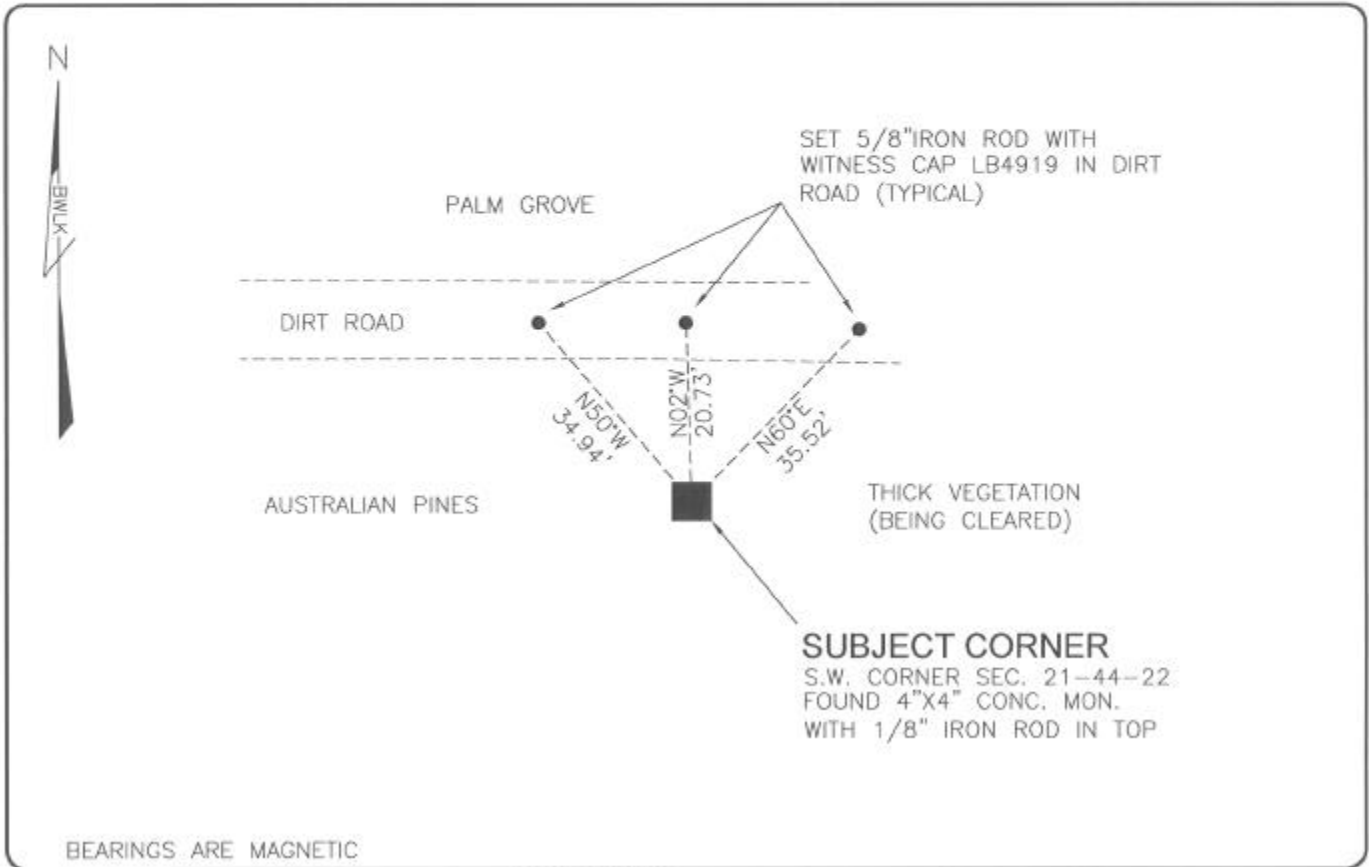


LAND CORNER RECORD

PUBLIC WORKS  
LEE COUNTY, FLORIDA

Address - 1500 Monroe St., Ft. Myers, Fla. 33901

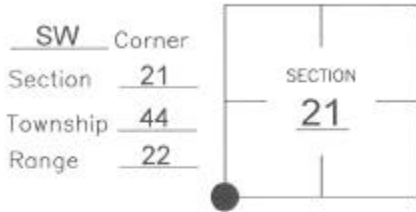
Phone : (239) 479-8900



BEARINGS ARE MAGNETIC

COMMENTS:  
CORNER FOUND AT SAME LOCATION NOTED IN C.C.R.#41308.

CORNER DESCRIPTION



HORIZONTAL POSITION INFORMATION

Florida West Zone, NAD 1983(1990 Adjustment)  
 Northing(ft) 831416.66 Easting(ft) 615368.29  
 Latitude 26°37'15.5064" Longitude 82°07'29.5629"  
 Scale Factor 0.99994

EXISTING CERTIFIED CORNER RECORDS

Document No.	Date
14751	4-15-82
41308	1-02-92

The above documents are based on FDEP Bureau of Surveying and Mapping Record Information.

I hereby certify the monument and accessories shown above were field located on 4-07-04

*Scott C. Whitaker*  
 SCOTT C. WHITAKER  
 Professional Surveyor and Mapper  
 Florida Certificate No. 4324  
 Date Signed 9-03-04

BEAN, WHITAKER, LUTZ & KAREH, INC. (CB 4919)  
 13041 McGregor Boulevard  
 Fort Myers, Florida 33919-5910  
 Phone: (239) 481-1331



POINT NO. 11052

BLM REFERENCE NO. T44SR22E300300