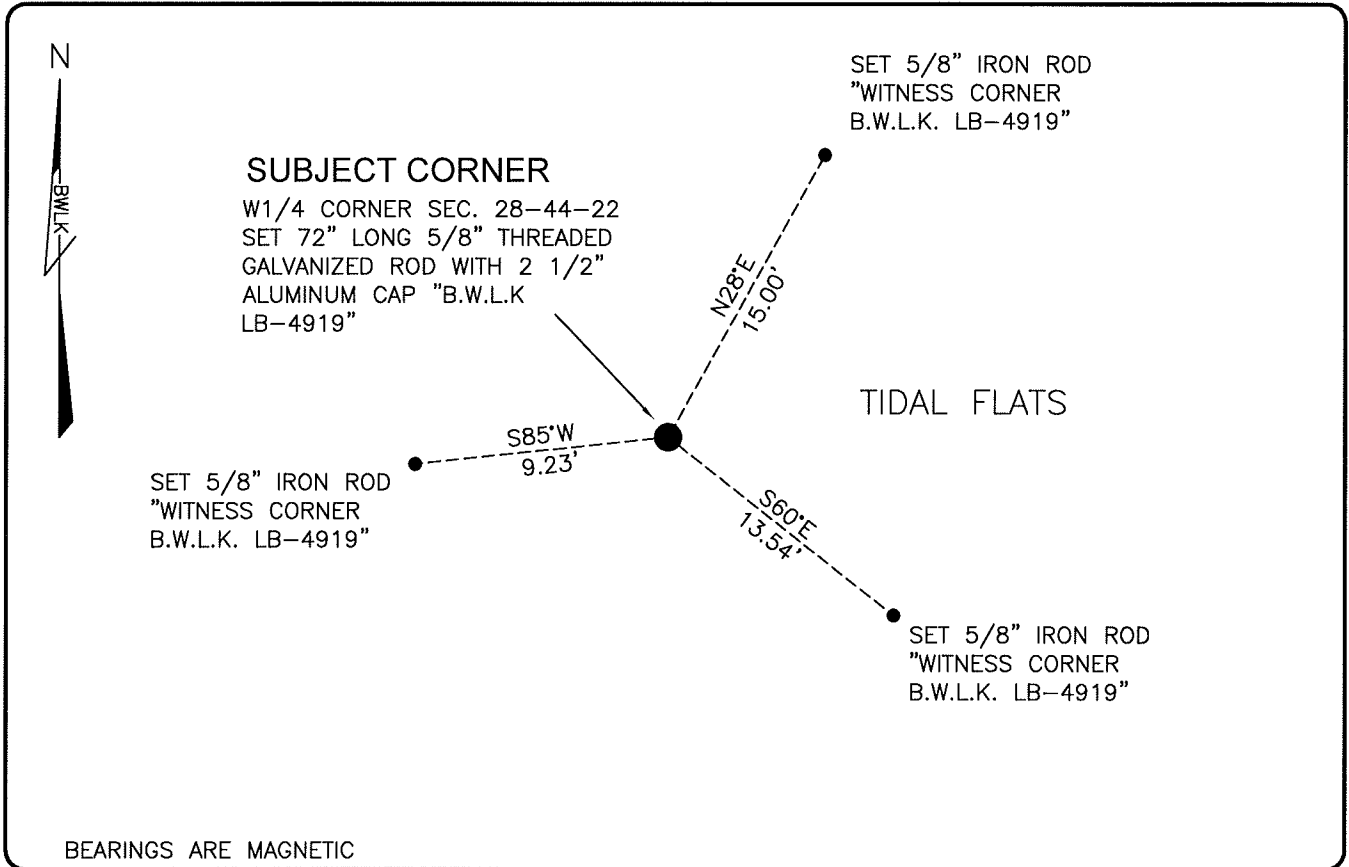


LAND CORNER RECORD

PUBLIC WORKS  
LEE COUNTY, FLORIDA

Address - 1500 Monroe St., Ft. Myers, Fla. 33901

Phone : (239) 479-8900

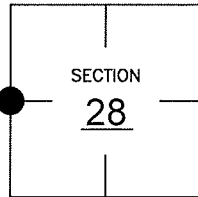


BEARINGS ARE MAGNETIC

COMMENTS: CORNER SET BASED ON OLD SURVEY BY CARL E. JOHNSON DATED 1949

CORNER DESCRIPTION

W1/4 Corner  
Section 28  
Township 44  
Range 22



HORIZONTAL POSITION INFORMATION

Florida West Zone, NAD 1983(1990 Adjustment)  
Northing(ft) 828715.99 Easting(ft) 615471.48  
Latitude 26°36'48.7598" Longitude 82°07'28.3969"  
Scale Factor 0.99994

EXISTING CERTIFIED CORNER RECORDS

Document No.	Date
NONE	NONE

The above documents are based on FDEP Bureau of Surveying and Mapping Record Information.

I hereby certify the monument and accessories shown above were field located on 3-22-07.

*Scott C. Whitaker*

SCOTT C. WHITAKER  
Professional Surveyor and Mapper  
Florida Certificate No. 4324  
Date Signed 3/14/07

BEAN, WHITAKER, LUTZ & KAREH, INC. (LB 4919)  
13041 McGregor Boulevard  
Fort Myers, Florida 33919-5910  
Phone: (239) 481-1331

POINT NO. 11051

BLM REFERENCE NO. T44SR22E300240