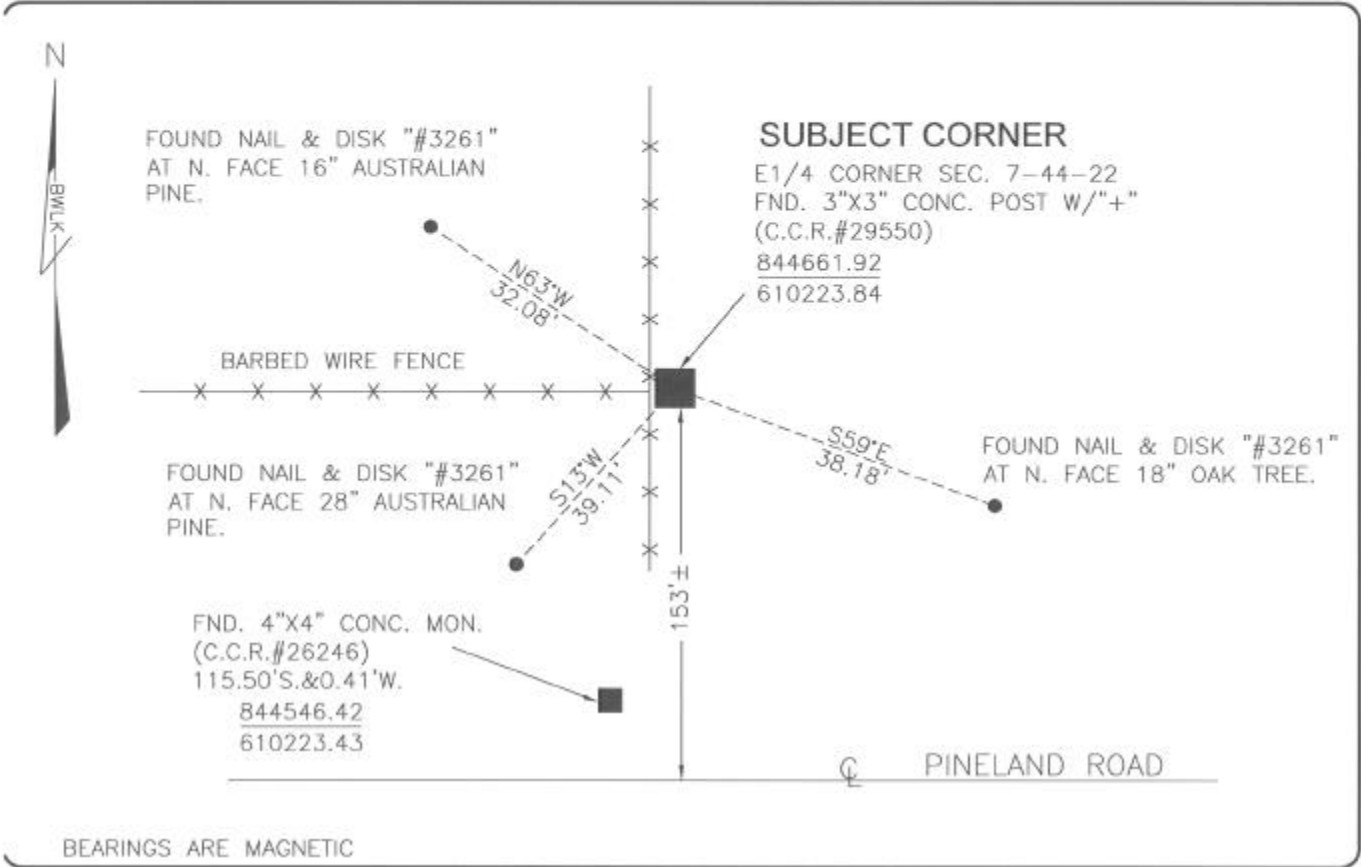


LAND CORNER RECORD

**PUBLIC WORKS
LEE COUNTY, FLORIDA**

Address - 1500 Monroe St., Ft. Myers, Fla. 33901

Phone : (239) 479-8900



BEARINGS ARE MAGNETIC

COMMENTS:

DISPUTED CORNER. FOUND CONCRETE MONUMENT (CCR 29550) IS IN HARMONY WITH THE S.R.D. R/W MAPS FOR STRINGFELLOW ROAD (S.R.767) DATED 1940. THERE IS ANOTHER MONUMENT LYING 115.50' SOUTH OF THE SUBJECT CORNER WHICH IS FILED IN CCR 26246.

CORNER DESCRIPTION

E1/4 Corner
Section 7
Township 44
Range 22



HORIZONTAL POSITION INFORMATION

Florida West Zone, NAD 1983(1990 Adjustment)
Northing(ft) 844661.92 Easting(ft) 610223.84
Latitude 26°39'26.6347" Longitude 82°08'26.4109"
Scale Factor 0.99994

EXISTING CERTIFIED CORNER RECORDS

Document No.	Date
<u>26246</u>	<u>7-17-87</u>
<u>29550</u>	<u>7-26-88</u>

The above documents are based on FDEP Bureau of Surveying and Mapping Record Information.

I hereby certify the monument and accessories shown above were field located on 8-11-04.

Scott C. Whitaker
SCOTT C. WHITAKER
Professional Surveyor and Mapper
Florida Certificate No. 4324
Date Signed 9-03-04

BEAN, WHITAKER, LUTZ & KAREL, INC. (LB 4919)
13041 McGregor Boulevard
Fort Myers, Florida 33919-5910
Phone: (239) 481-1331

POINT NO. 11517

BLM REFERENCE NO. T44SR22E200540