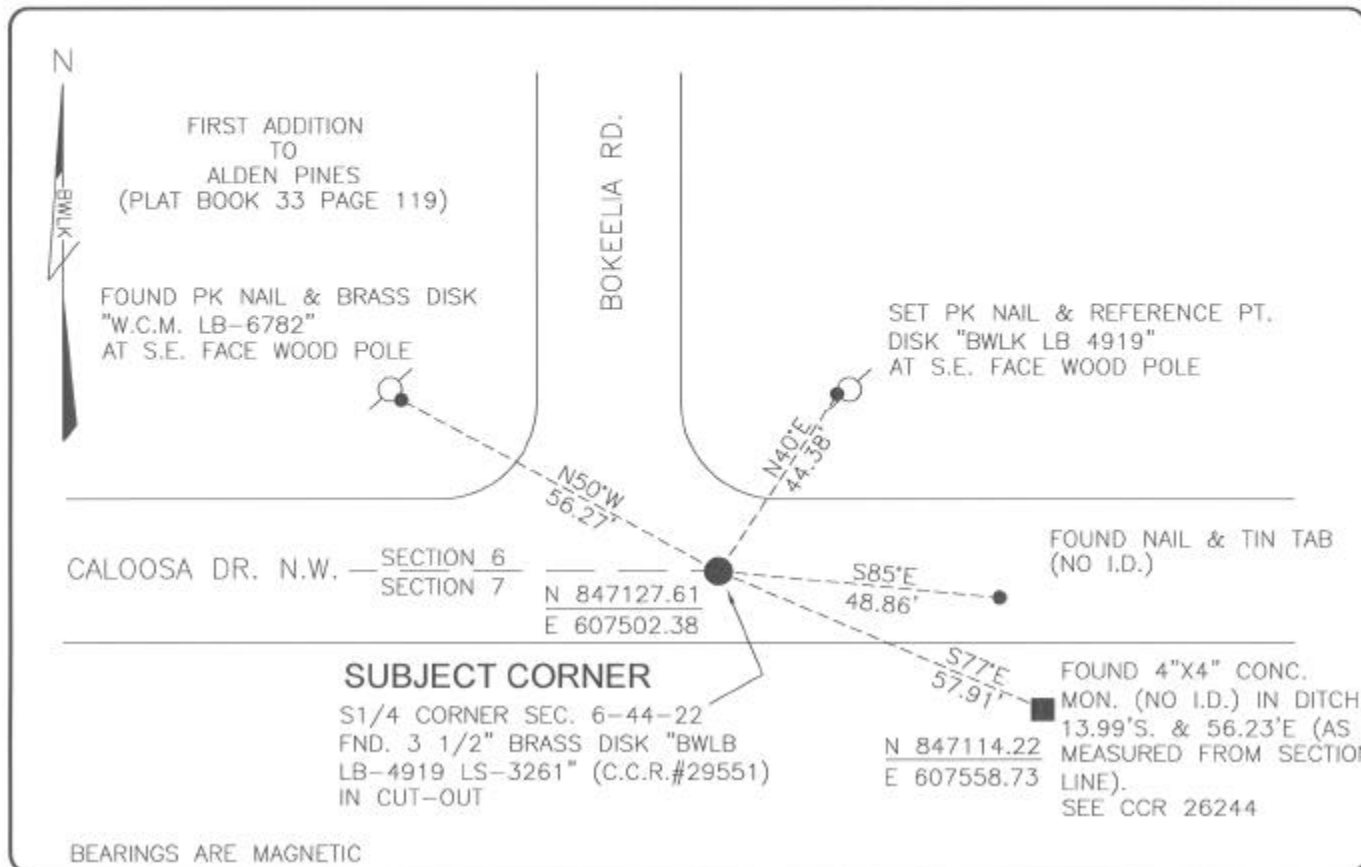


LAND CORNER RECORD

**PUBLIC WORKS
LEE COUNTY, FLORIDA**

Address - 1500 Monroe St., Ft. Myers, Fla. 33901

Phone : (239) 479-8900



COMMENTS:

DISPUTED CORNER (REFER TO C.C.R. #26244)
CORNER WAS SET AT THIS LOCATION IN 1988 BASED ON TIES TO 1/4 1/4 CORNER SHOWN ON S.R.D. RIGHT OF WAY MAPS DATED 1940. THERE WAS A COURT RULING ON THIS CORNER.

CORNER DESCRIPTION

S1/4 Corner
Section 6
Township 44
Range 22



HORIZONTAL POSITION INFORMATION

Florida West Zone, NAD 1983(1990 Adjustment)
Northing(ft) 847127.61 Easting(ft) 607502.38
Latitude 26°39'51.0243" Longitude 82°08'56.4401"
Scale Factor 0.99994

EXISTING CERTIFIED CORNER RECORDS

Document No.	Date
<u>26244</u>	<u>7-17-87</u>
<u>29551</u>	<u>8-26-88</u>

The above documents are based on FDEP Bureau of Surveying and Mapping Record Information.

I hereby certify the monument and accessories shown above were field located on 8-25-04

Scott C. Whitaker
SCOTT C. WHITAKER
Professional Surveyor and Mapper
Florida Certificate No. 4324
Date Signed 9-03-04

BEAN, WHITAKER, LUTZ & KAREH, INC. (LB 4919)
13041 McGregor Boulevard
Fort Myers, Florida 33919-5910
Phone: (239) 481-1331

POINT NO. 11506

BLM REFERENCE NO. T44SR22E140600