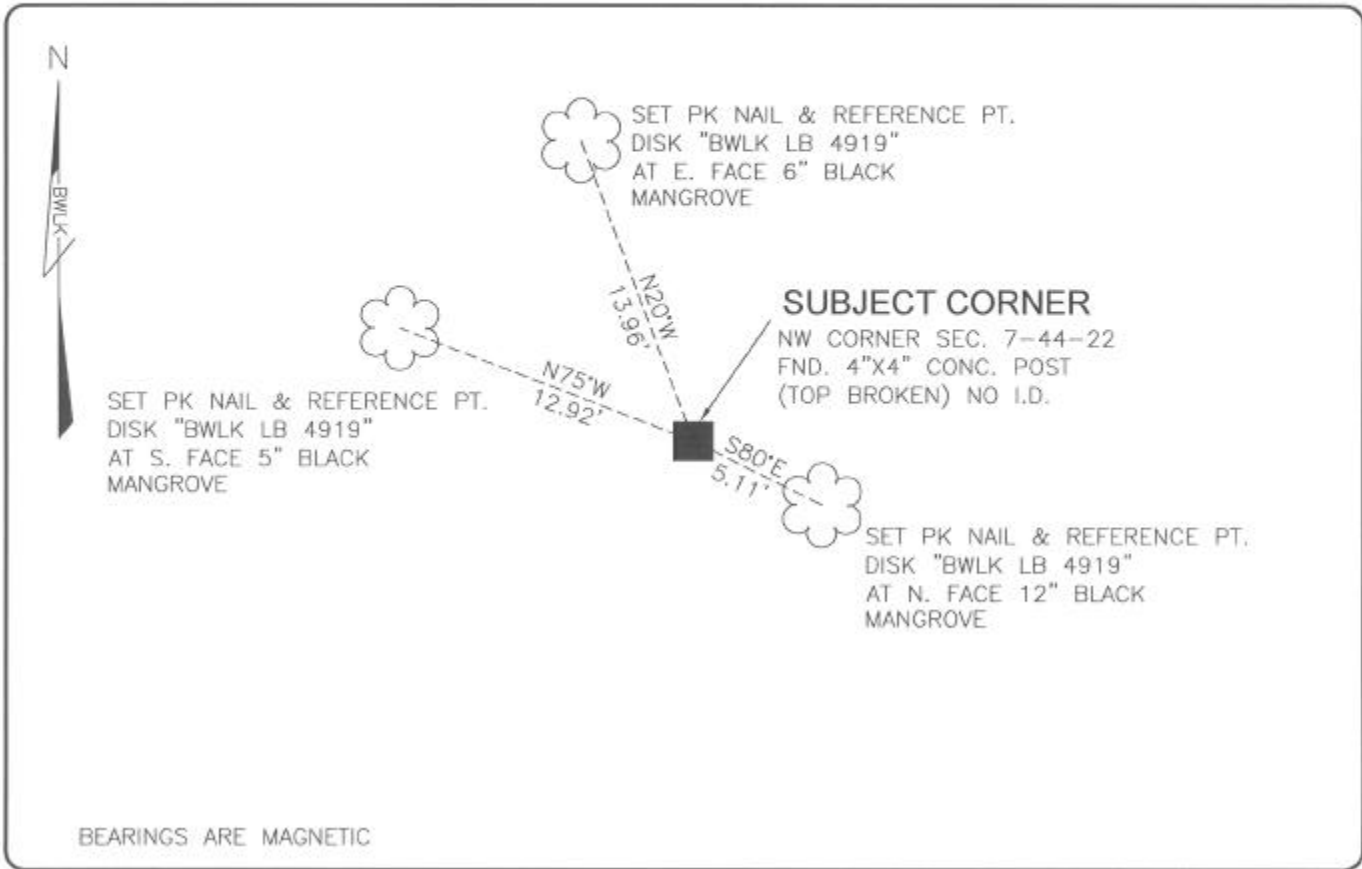


LAND CORNER RECORD

PUBLIC WORKS
LEE COUNTY, FLORIDA

Address - 1500 Monroe St., Ft. Myers, Fla. 33901

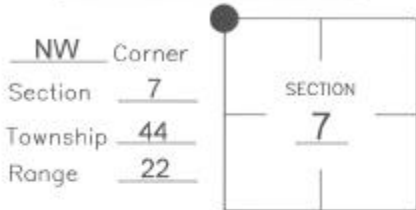
Phone : (239) 479-8900



COMMENTS:

CORNER RECOVERED AS SHOWN ON C.C.R.#24254.
CO-ORDINATES SHOWN ARE FOR EXISTING MONUMENT. THIS WAS A CONCRETE POST APPROXIMATELY 2' ABOVE GRADE. IT IS NOW BROKEN OFF AT GRADE DUE TO HURRICANE CHARLEY.

CORNER DESCRIPTION



HORIZONTAL POSITION INFORMATION

Florida West Zone, NAD 1983(1990 Adjustment)
 Northing(ft) 847103.05 Easting(ft) 604796.89
 Latitude 26°39'50.7489" Longitude 82°09'26.2632"
 Scale Factor 0.99994

EXISTING CERTIFIED CORNER RECORDS

Document No.	Date
<u>24254</u>	<u>10-15-86</u>

The above documents are based on FDEP Bureau of Surveying and Mapping Record Information.

I hereby certify the monument and accessories shown above were field located on 8-25-04

Scott C. Whitaker
SCOTT C. WHITAKER
 Professional Surveyor and Mapper
 Florida Certificate No. 4324
 Date Signed 9-03-04

BEAN, WHITAKER, LUTZ & KABEH, INC. (LB 4915)
 13041 McGregor Boulevard
 Fort Myers, Florida 33919-5910
 Phone: (239) 481-1331

POINT NO. 11605

BLM REFERENCE NO. T44SR22E100600