

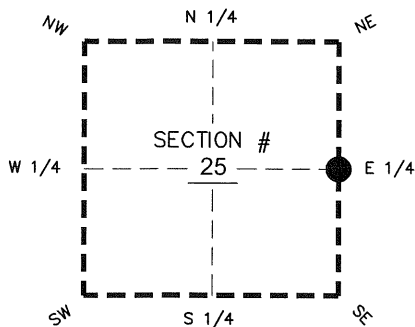
FLORIDA DEPARTMENT OF ENVIRONMENTAL PROTECTION
CERTIFIED CORNER RECORD

247

DOC. # _____
 BLM. # T43SR27E700240

CORNER DESCRIPTION: MONUMENTATION DESCRIPTION (EVIDENCE FOUND OR METHOD TO SET)

Depict corner with ●



E 1/4 corner of Section 25
 Twp 43 S, Rge 27 E
 Tallahassee Base Meridian,
 LEE County(s), Florida

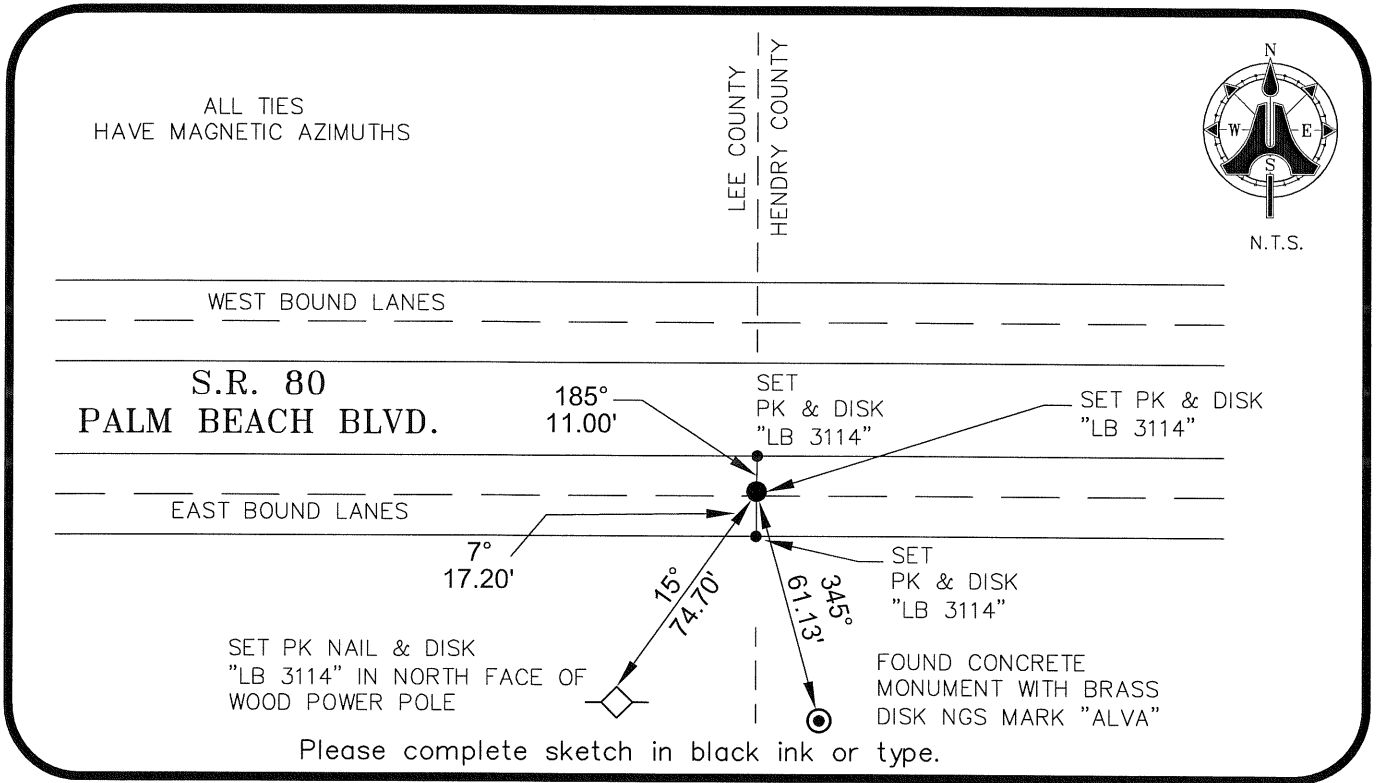
SET PK NAIL & DISK "LB 3114" IN ASPHALT ROAD
 CORNER SET USING ARMY CORPS OF ENGINEERS C-43
 (CALOOSAHATCHEE RIVER) RIGHT OF WAY MAPS

PRIOR CCR'S:

DOC. # 28737, 43610, 63845, 66138

HORIZONTAL POSITION INFORMATION (if determined):

Latitude 26° 42' 33.6773" N Longitude 81° 33' 59.4141" W
 Y(NORTHING-Ft.) 863762.84 X(EASTING-Ft.) 797683.38 Zone West
 Convergence 0° 11' 41.4" Scale factor 0.99996414
 Coordinate determination: GPS
 Horizontal datum: NAD83(NSRS2007)
 Accuracy (circle one): 1st 2nd 3rd other 1:35,000



SURVEYORS CERTIFICATE:

I certify the monument and accessories indicated above were field located on 07/06/09

BEN R. HOMOLA

Ben R. Homola

SIGNATURE

AIM ENGINEERING & SURVEYING, INC.

FIRM OR AGENCY

5300 LEE BOULEVARD

LEHIGH ACRES

ADDRESS

FL

33971

(239)332-4569

PHONE NUMBER

07/13/09

DATE

ZIP

EMBOSSSED SEAL OVER SIGNATURE

SEND ORIGINAL TO:
 Department of Environmental Protection
 Bureau of Surveying and Mapping
 3900 Commonwealth Boulevard
 Mail Station 105
 Tallahassee, Florida 32399

D.E.P. USE ONLY	
Processed: _____	
B.L.M. - I.D. _____	
QUAD - I.D. _____	