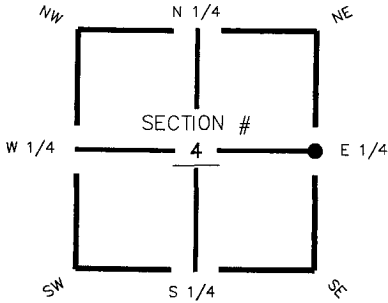


FLORIDA DEPARTMENT OF ENVIRONMENTAL PROTECTION
CERTIFIED CORNER RECORD

DOC. # 089426

CORNER DESCRIPTION: MONUMENTATION DESCRIPTION (EVIDENCE FOUND OR METHOD TO SET)

Depict corner with C-13

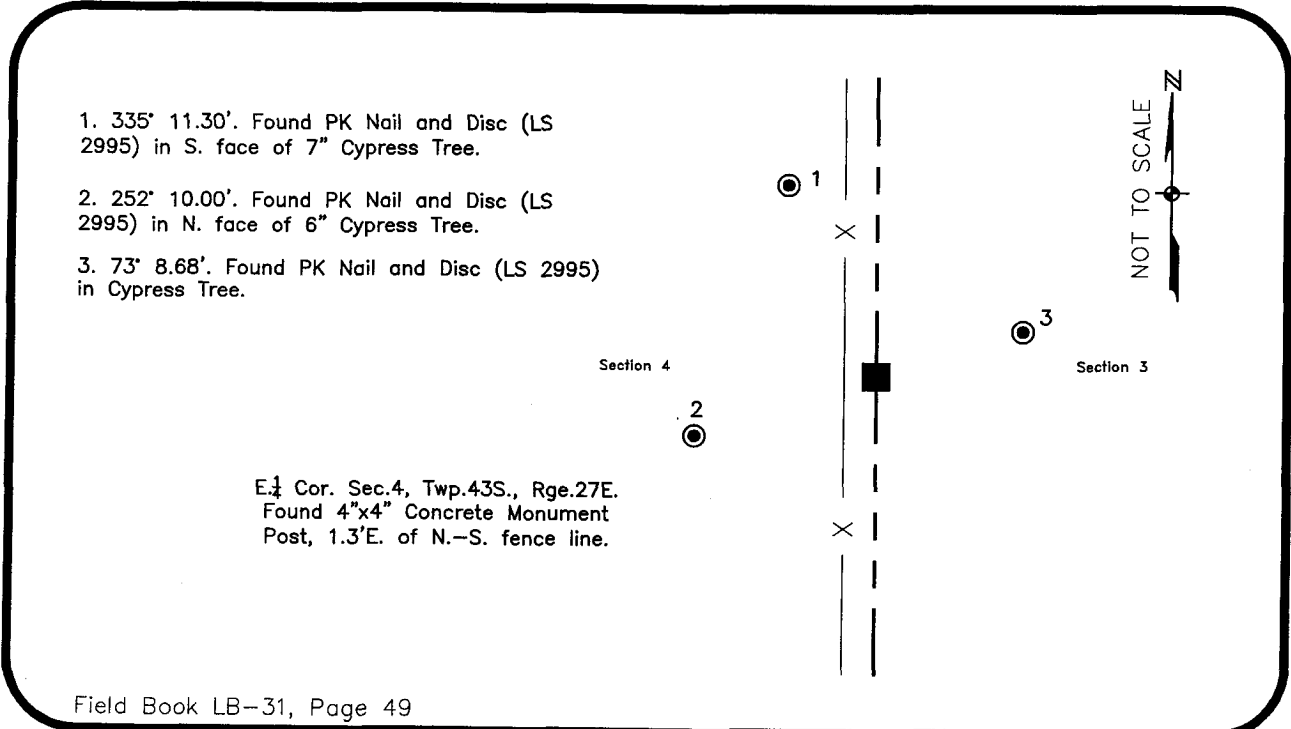


Found 4"x4" Concrete Monument Post

HORIZONTAL POSITION INFORMATION (if determined):

Latitude 26° 45' 44.28026" N Longitude 81° 36' 53.61483" W
 Y(NORTHING-Ft.) 882957.61 X(EASTING-Ft.) 781828.20 Zone FL83-WF
 Convergence 0° 10' 24.28318" Scale factor 0.999959281
 Coordinate determination (circle one): Field traverse GPS
 Horizontal datum (circle one): NAD27 NAD83(1986) NAD83(1999) other (explain)
 Accuracy (circle one): 1st 2nd 3rd other _____

E 1/4 corner of Section 4
Twp 43 South , Rge 27 East
 Tallahassee Base Meridian,
Lee County(s), Florida



Field Book LB-31, Page 49

SURVEYORS CERTIFICATE:

I certify the monument and accessories indicated above were field located on September 2, 2005

[Signature]
 SIGNATURE 4912
 Johnson Engineering, Inc. PSM NO. 642
 FIRM OR AGENCY LB NO.
 251 West Hickpochee (SR80) ADDRESS
 La Belle, FL Florida 33935
 CITY STATE ZIP
 (863) 612-0394 DATE November 1, 2005
 PHONE NUMBER DATE

SEND ORIGINAL TO:
 Department of Environmental Protection
 Bureau of Surveying and Mapping
 3900 Commonwealth Boulevard
 Mail Station 105
 Tallahassee, Florida 32399

D.E.P. USE ONLY
 Processed: 11-13-06 MIB
 B.L.M. - I.D. 400640
 QUAD - I.D. 2313 Telegraph Swamp SE

EMBOSSSED SEAL OVER SIGNATURE