

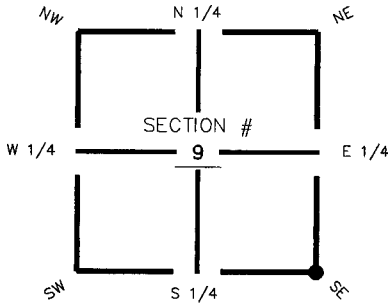
**FLORIDA DEPARTMENT OF ENVIRONMENTAL PROTECTION
CERTIFIED CORNER RECORD**

089435

DOC. # _____

CORNER DESCRIPTION: **MONUMENTATION DESCRIPTION (EVIDENCE FOUND OR METHOD TO SET)**

Depict corner with ● J-13



Found $\frac{5}{8}$ " Iron Rod

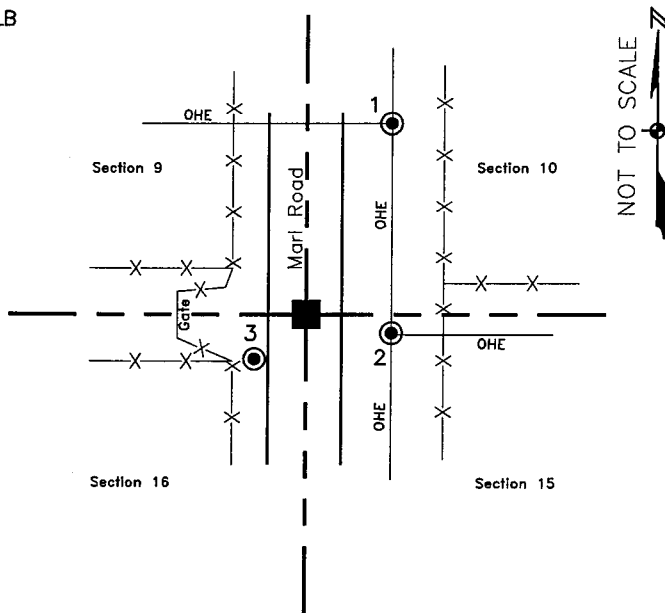
HORIZONTAL POSITION INFORMATION (if determined):

Latitude 26° 44' 23.75816" N Longitude 81° 36' 54.94728" W
 Y(NORTHING-Ft.) 874826.78 X(EASTING-Ft.) 781732.00 Zone FL83-WF
 Convergence 0° 10' 23.20033" Scale factor 0.999959253
 Coordinate determination (circle one): Field traverse (GPS)
 Horizontal datum (circle one): NAD27 NAD83(1986) (NAD83(1999)) other (explain)
 Accuracy (circle one): 1st (2nd) 3rd other _____

SE corner of Section 9
 Twp 43 South , Rge 27 East
 Tallahassee Base Meridian,
Lee County(s), Florida

1. 24' 54.38'. Set PK Nail and Trav. Pt. Disc (LB 642) in W. face of wood power pole.
2. 108' 15.04'. Set PK Nail and Trav. Pt. Disc (LB 642) in N. face of wood power pole.
3. 220' 13.43'. Set PK Nail and Trav. Pt. Disc (LB 642) in E. face of 36" Oak tree.

S.E. Cor. Sec.9, Twp.43S., Rge.27E.
 Found $\frac{5}{8}$ " Iron Rod near entrance to
 19035 Parkinson Road.



Field Book LB-21, Page 26

SURVEYORS CERTIFICATE:

I certify the monument and accessories indicated above were field located on September 2, 2005

[Signature]
 SIGNATURE 4912
 Johnson Engineering, Inc. PSM NO. 642
 FIRM OR AGENCY LB NO.
 251 West Hickpochee (SR80)
 ADDRESS
 La Belle Florida 33935
 CITY STATE ZIP
 (863) 612-0594 November 1, 2005
 PHONE NUMBER DATE

EMBOSSSED SEAL OVER SIGNATURE

SEND ORIGINAL TO:
 Department of Environmental Protection
 Bureau of Surveying and Mapping
 3900 Commonwealth Boulevard
 Mail Station 105
 Tallahassee, Florida 32399

D.E.P. USE ONLY
 Processed: 11-13-06 MB
 B.L.M. - I.D. 400500
 QUAD - I.D. 2a13 A1VA