

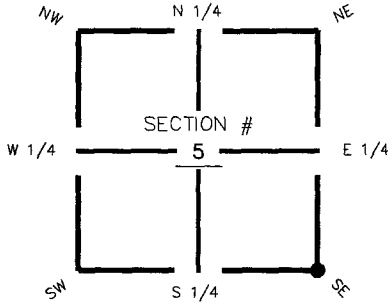
**FLORIDA DEPARTMENT OF ENVIRONMENTAL PROTECTION
CERTIFIED CORNER RECORD**

089429

DOC. # _____

CORNER DESCRIPTION: MONUMENTATION DESCRIPTION (EVIDENCE FOUND OR METHOD TO SET)

Depict corner with E-9

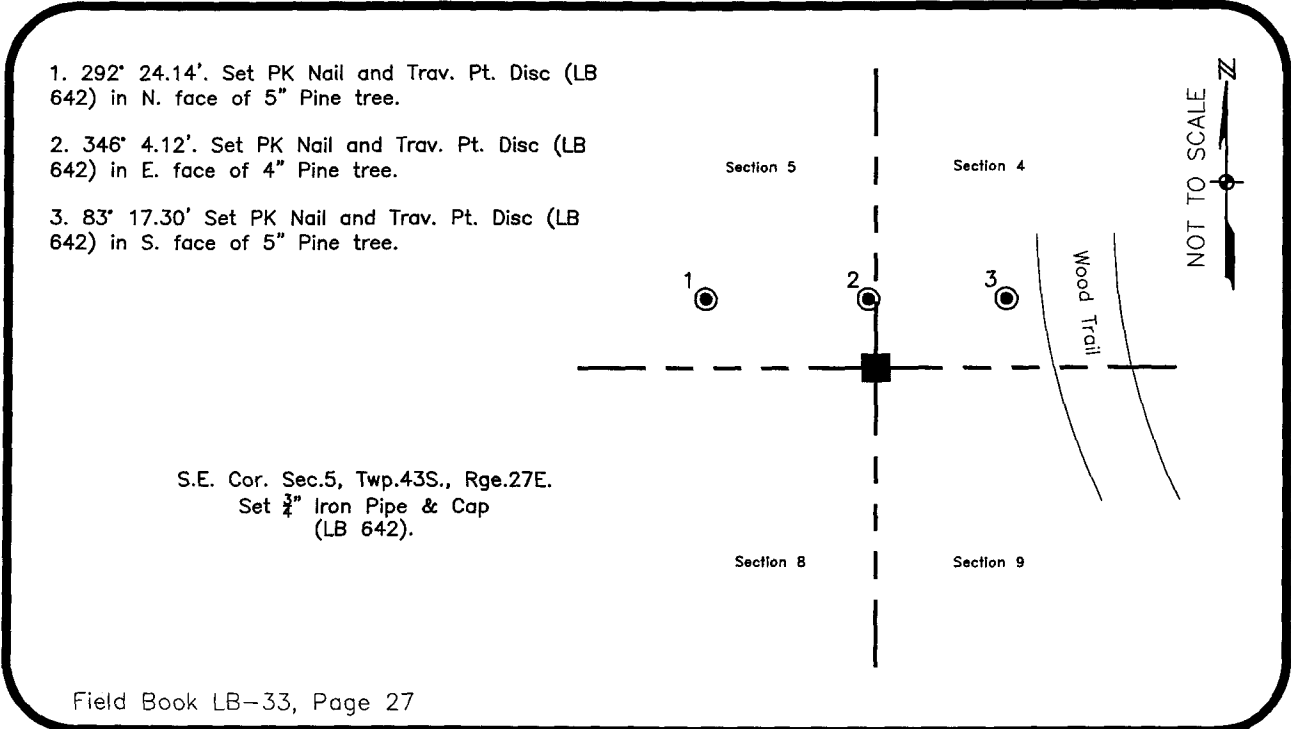


Set $\frac{3}{4}$ " Iron Pipe & Cap
(LB 642)

HORIZONTAL POSITION INFORMATION (if determined):

Latitude 26° 45' 19.38494" N Longitude 81° 37' 52.77673" W
 Y(NORTHING-Ft.) 880428.00 X(EASTING-Ft.) 776473.02 Zone FL83-WF
 Convergence 0° 09' 57.49919" Scale factor 0.999957771
 Coordinate determination (circle one): Field traverse GPS
 Horizontal datum (circle one): NAD27 NAD83(1986) NAD83(1999) other (explain)
 Accuracy (circle one): 1st 2nd 3rd other _____

SE corner of Section 5
 Twp 43 South , Rge 27 East
 Tallahassee Base Meridian,
Lee County(s), Florida



1. 292' 24.14'. Set PK Nail and Trav. Pt. Disc (LB 642) in N. face of 5" Pine tree.
2. 346' 4.12'. Set PK Nail and Trav. Pt. Disc (LB 642) in E. face of 4" Pine tree.
3. 83' 17.30' Set PK Nail and Trav. Pt. Disc (LB 642) in S. face of 5" Pine tree.

S.E. Cor. Sec.5, Twp.43S., Rge.27E.
 Set $\frac{3}{4}$ " Iron Pipe & Cap
 (LB 642).

Field Book LB-33, Page 27

SURVEYORS CERTIFICATE:

I certify the monument and accessories indicated above were field located on November 3, 2005

[Signature]
 SIGNATURE _____ 4912
 JOHNSON ENGINEERING, INC. PSM NO. _____ 642
 FIRM OR AGENCY LB NO. _____
 251 West Hickpochee (SR80) ADDRESS _____
 La Belle, Florida 33935 CITY STATE ZIP
 (863) 612-0594 PHONE NUMBER
 November 1, 2005 DATE

SEND ORIGINAL TO:
 Department of Environmental Protection
 Bureau of Surveying and Mapping
 3900 Commonwealth Boulevard
 Mail Station 105
 Tallahassee, Florida 32399

D.E.P. USE ONLY

Processed: 11-13-06 MB
 B.L.M. - I.D. 300600
 QUAD - I.D. 2314 Telegraph Swamp

EMBOSSÉD SEAL OVER SIGNATURE