

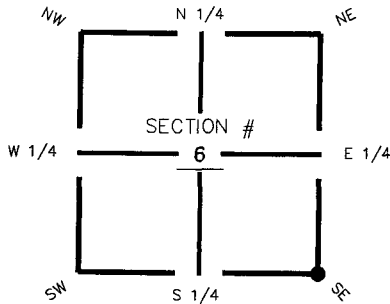
FLORIDA DEPARTMENT OF ENVIRONMENTAL PROTECTION CERTIFIED CORNER RECORD

089431

DOC. # _____

CORNER DESCRIPTION: MONUMENTATION DESCRIPTION (EVIDENCE FOUND OR METHOD TO SET)

Depict corner with ● E-5



Set $\frac{3}{4}$ " Iron Pipe & Cap
(LB 642)

HORIZONTAL POSITION INFORMATION (if determined):

Latitude 26° 45' 20.03944" N Longitude 81° 38' 51.64746" W

Y(NORTHING-Ft.) 880478.97 X(EASTING-Ft.) 771136.45 Zone FL83-WF

Convergence 0° 09' 30.99937" Scale factor 0.999956331

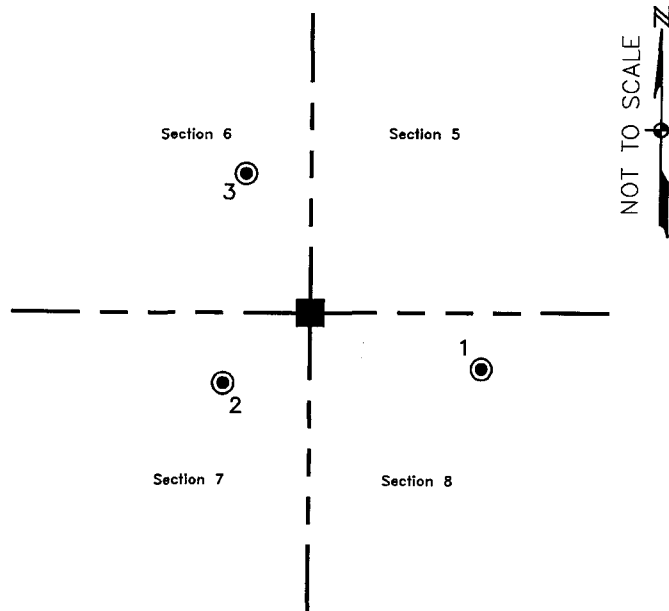
Coordinate determination (circle one): Field traverse (GPS)

Horizontal datum (circle one): NAD27 NAD83(1986) (NAD83(1999)) other (explain)

Accuracy (circle one): 1st (2nd) 3rd other _____

SE corner of Section 6
Twp 43 South , Rge 27 East
Tallahassee Base Meridian,
Lee County(s), Florida

1. 108' 47.35'. Set PK Nail and Trav. Pt. Disc (LB 642) in N. face of 5" Cypress tree.
2. 231' 29.68'. Set PK Nail and Trav. Pt. Disc (LB 642) in E. face of 6" Pine tree.
3. 335' 40.91'. Set PK Nail and Trav. Pt. Disc (LB 642) in E. face of 8" Pine tree.



S.E. Cor. Sec.6, Twp.43S., Rge.27E.
Set $\frac{3}{4}$ " Iron Pipe & Cap
(LB 642).

Field Book LB-33, Page 30

SURVEYORS CERTIFICATE:

I certify the monument and accessories indicated above were field located on November 3, 2005

[Signature]
SIGNATURE 4912
Johnson Engineering, Inc. PSM NO. 642
FIRM OR AGENCY LB NO.
251 West Hickpochee (SR80)
ADDRESS
La Belle Florida 33935
CITY STATE ZIP
(863) 612-0594 November 1, 2005
PHONE NUMBER DATE

SEND ORIGINAL TO:
Department of Environmental Protection
Bureau of Surveying and Mapping
3900 Commonwealth Boulevard
Mail Station 105
Tallahassee, Florida 32399

Processed: 11-13-06 MB D.E.P. USE ONLY
B.L.M. - I.D. 200600
QUAD - I.D. 2314 Telegraph Swamp

EMBOSSSED SEAL OVER SIGNATURE